

on the radar

may eighteenth two thousand eighteen

LFEAC








07/19/2018

The next LFEAC meeting will be at 6 p.m. Thursday, July 19, 2018 at the Administration Building located at 7555 Lemmon Ave. Please join us and be prepared to discuss any environmental concerns you may have, including noise.



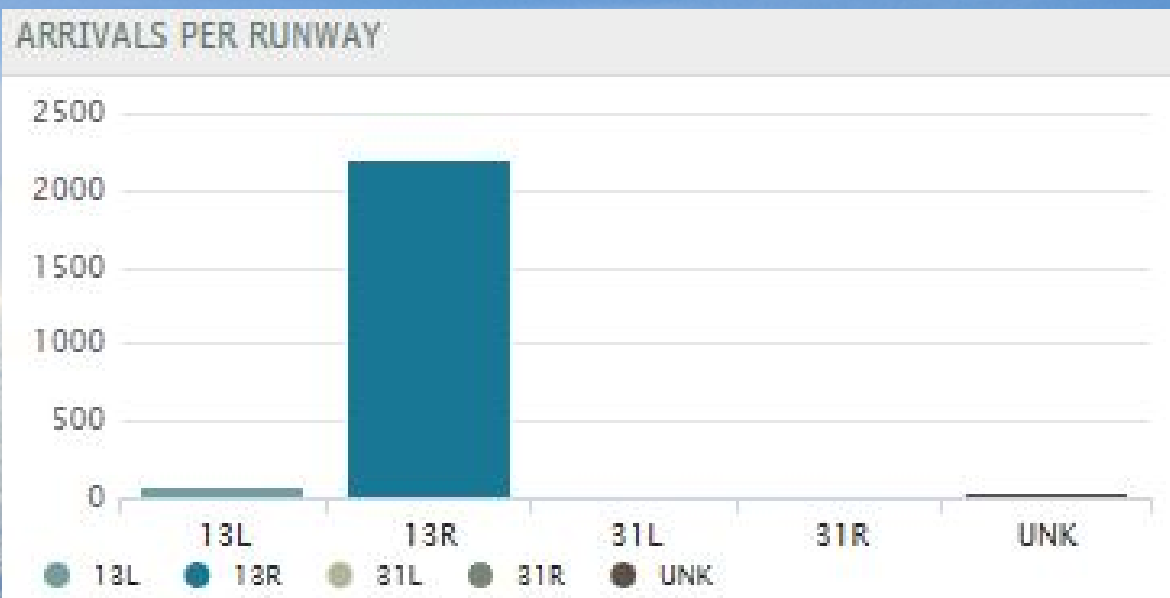
"Dallas Love Field Airport
has a history as bright as its
future."

Weather Forecast

DAY		DESCRIPTION	HIGH / LOW	PRECIP	WIND	HUMIDITY
TODAY MAY 18		Partly Cloudy	98° 73°	0%	SSE 15 mph	44%
SAT MAY 19		Partly Cloudy	94° 73°	10%	S 17 mph	56%
SUN MAY 20		AM Clouds/PM Sun	91° 72°	20%	SSE 10 mph	59%
MON MAY 21		Partly Cloudy	92° 73°	20%	SSE 10 mph	60%
TUE MAY 22		Partly Cloudy	90° 75°	20%	SSE 9 mph	60%
WED MAY 23		Partly Cloudy	93° 73°	10%	SSE 10 mph	52%
THU MAY 24		Partly Cloudy	94° 75°	20%	S 9 mph	49%

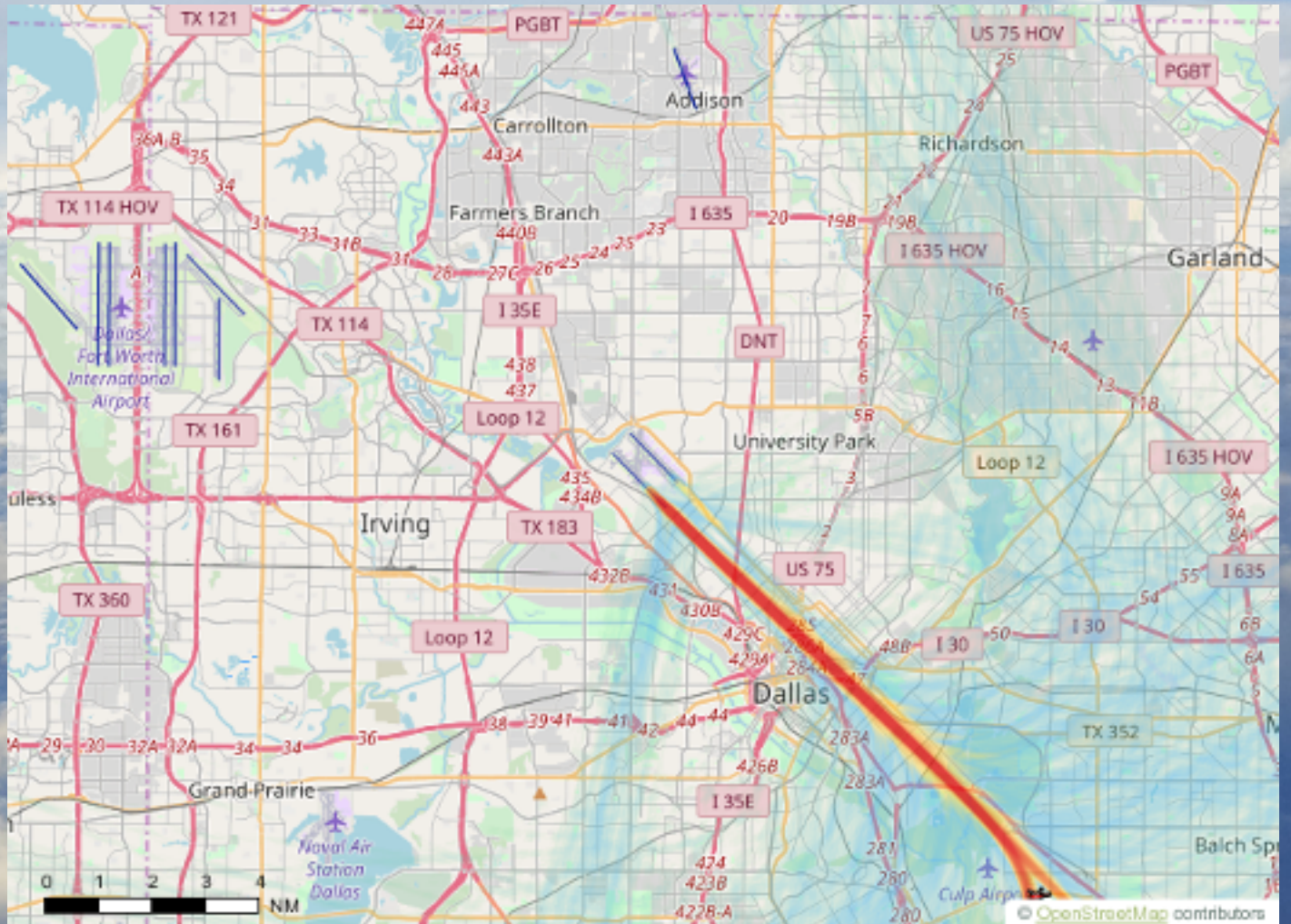
Arrivals and Departures per Runway

for the week of May 6 - 12



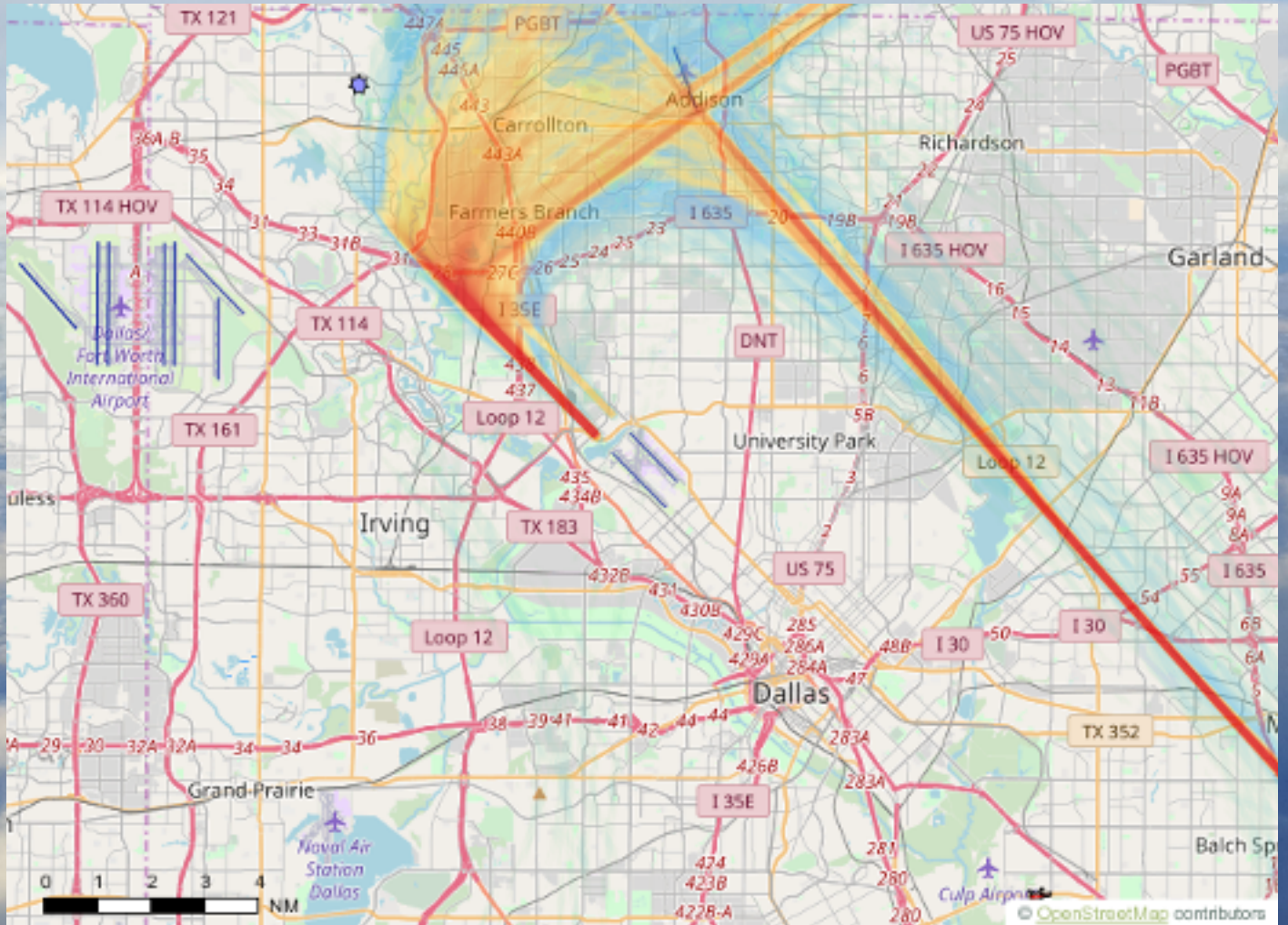
Departures

for the week of May 6 - 12



Arrivals

for the week of May 6 - 12



closures

RUNWAY & TAXIWAY CLOSURES:

NEXT 7 DAYS

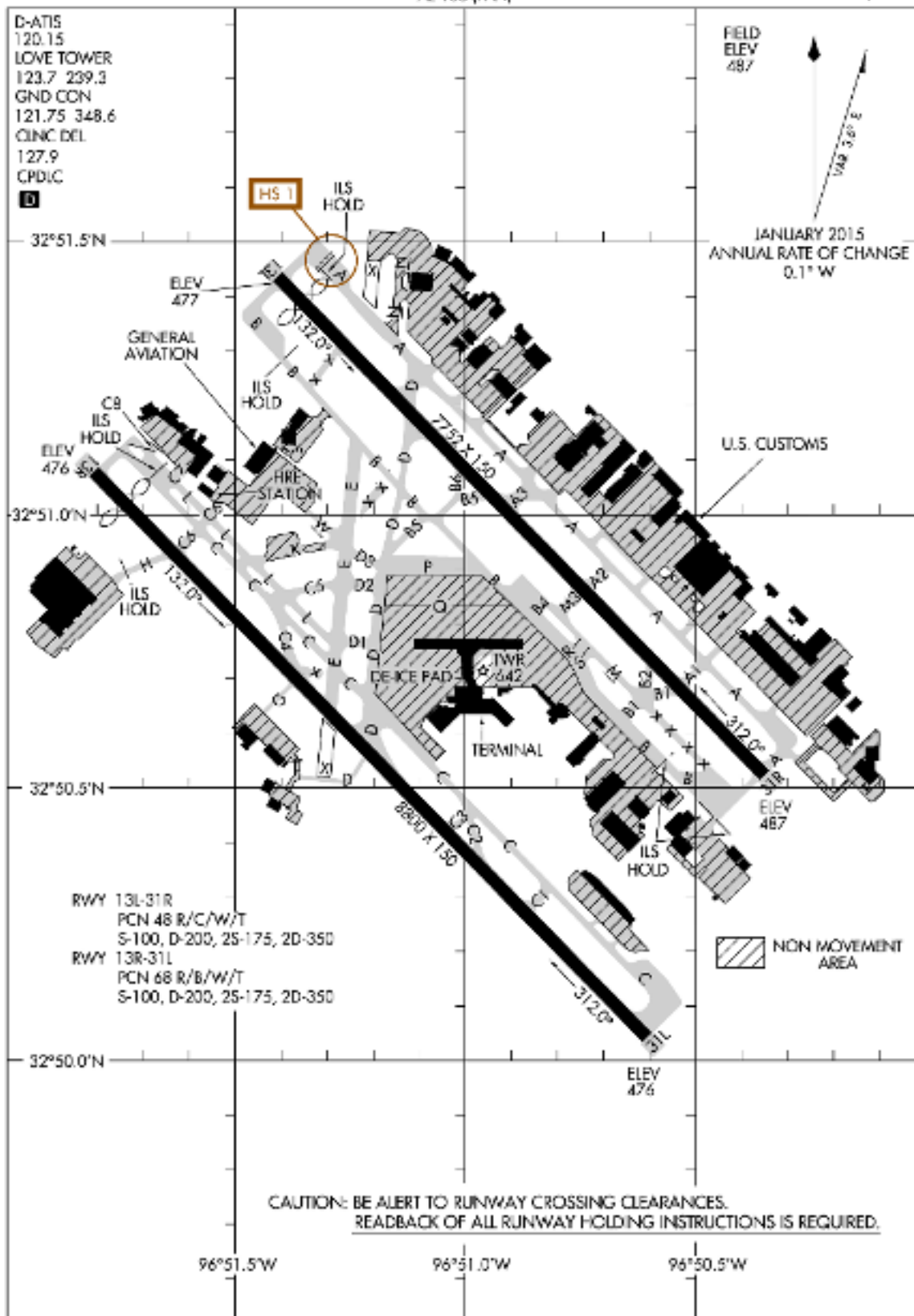
- Mon/May 21st 0800-1300: Taxiway B5 closed between B and 13L. Taxiways A3 and B6 closed. Taxiway B south 415 feet closed at approach end 31R.
- Mon/May 21st 1300-1700: Taxiway M closed between B1 and S. Taxiways B1 and B2 closed.
- Tue/May 22nd 0800-1400: Taxiway B closed from 450' to 1450' from southern end. Bombardier will have access from the Approach end of 31R and Gulfstream will have access from the north entrance.
- Tue/May 22nd 1400-1700: Taxiway B closed from 1350' from southern end to B1. Taxiway M closed between B1 and S. Taxiway B1 and B2 closed. Gulfstream will have access from the south entrance.
- Wed/May 23rd 0800-1700: Taxiway B5 closed between B and 13L. Taxiway B6 closed.
- Thurs/May 24th 2200- Fri/May 25th 0000: Taxiway D closed between B and 13L.
- Fri/May 25th 0000-0100: Taxiway B5 closed between B and 13L. Taxiway B6 closed.
- Fri/May 25th 0100-0600: Taxiway B closed between B5 and Gate 2. Taxiway M closed between M3 and B4. Taxiways B4 and P closed. Impacts to Gates 2, 4, 6 with no access. OPS to coordinate with SWA.

AIRPORT DIAGRAM

17229

AI-106 (FAA)

DALLAS LOVE FIELD (DAL)
DALLAS, TEXAS



AIRPORT DIAGRAM

17229

DALLAS, TEXAS
DALLAS LOVE FIELD (DAL)

In an effort to serve you better, Dallas Love Field has opened the Airport Communications Center (ACC) for your use. The ACC is staffed 24 hours per day to direct your airport related concerns. If you are submitting an aircraft noise complaint, please call the ACC at 214-670-LOVE (5683).



on the radar

8008 Herb Kelleher Way 214-670-5683 www.dallas-lovefield.com AVINoise@dallascityhall.com