

# on the radar

november sixteenth two thousand eighteen

## LFEAC




01/17/2018

The next LFEAC meeting will be at 6 p.m. Thursday, January 17, 2018 at the Administration Building located at 7555 Lemmon Ave. Please join us and be prepared to discuss any environmental concerns you may have, including noise.

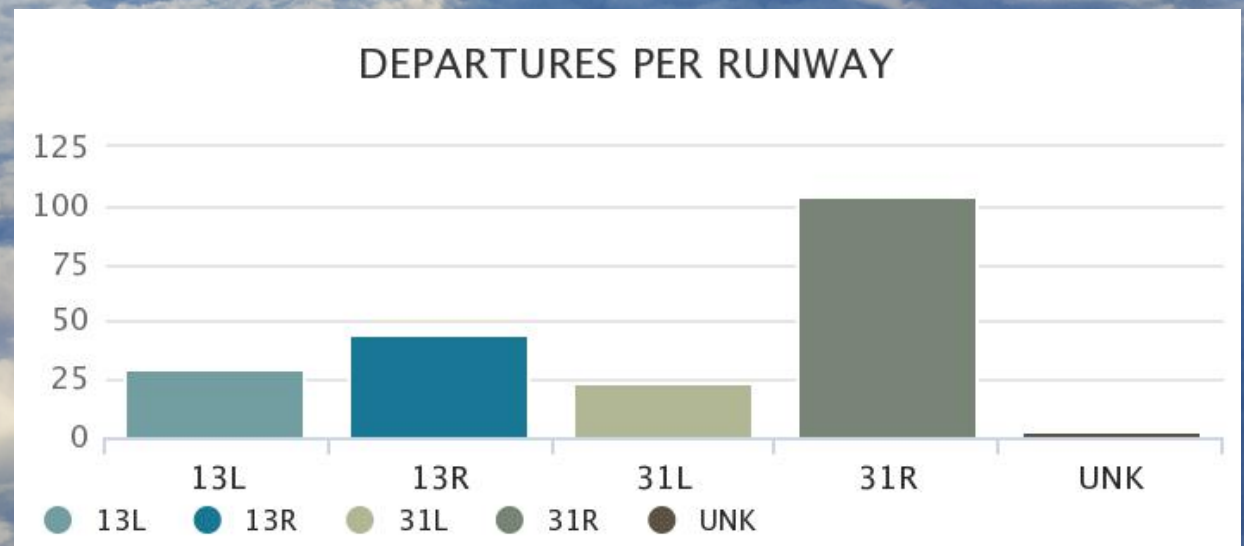
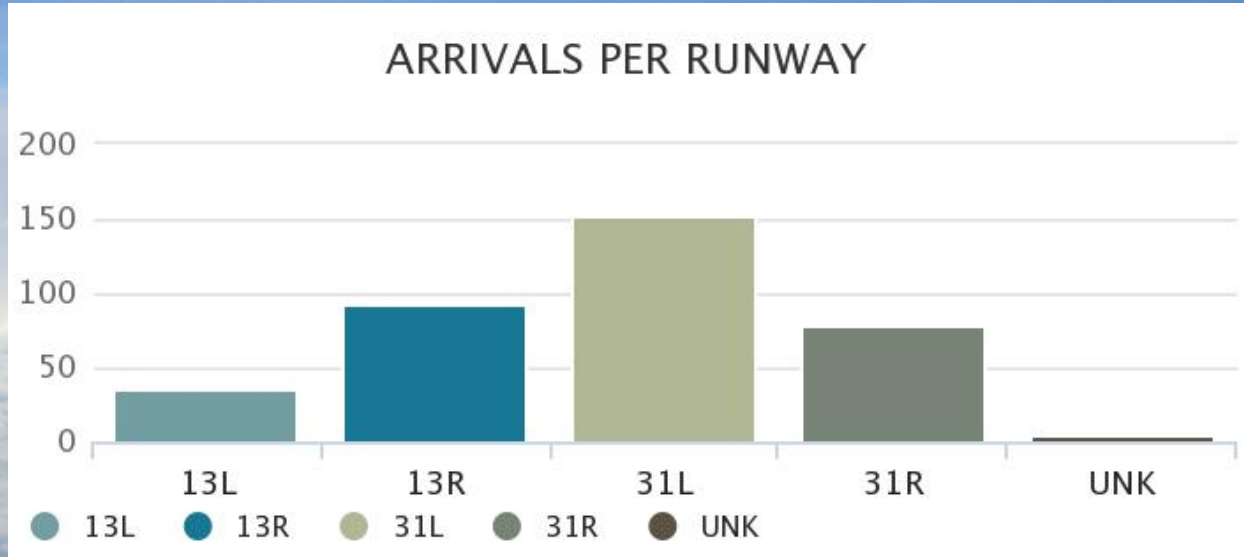


"Dallas Love Field Airport  
has a history as bright as its  
future."

## Weather Forecast

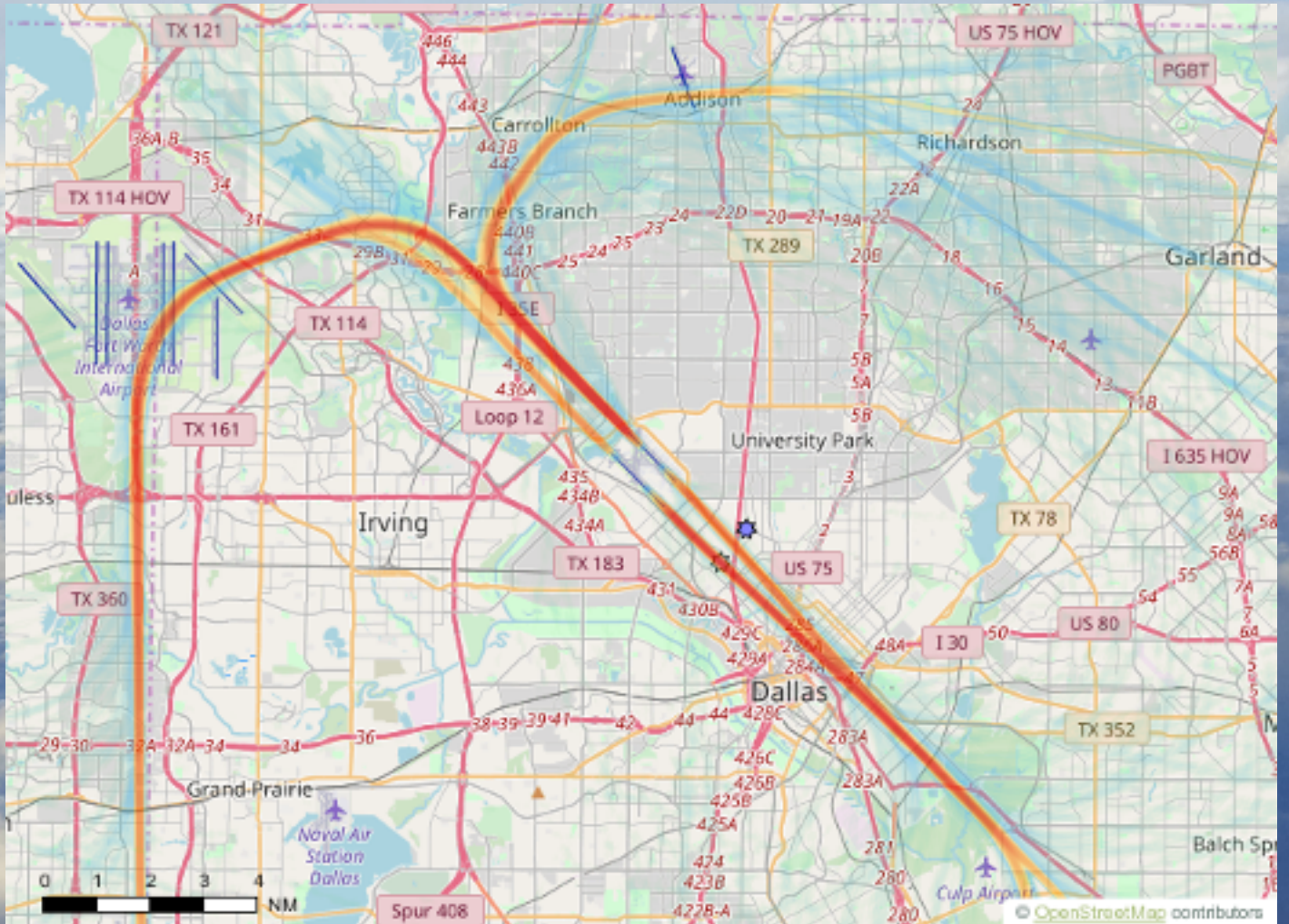
DAY		DESCRIPTION	HIGH / LOW	PRECIP	WIND	HUMIDITY
TODAY NOV 16		Sunny	71°/44°	0%	SSW 8 mph	46%
SAT NOV 17		Mostly Sunny	69°/45°	10%	S 10 mph	64%
SUN NOV 18		Cloudy	50°/37°	20%	NNW 12 mph	74%
MON NOV 19		Sunny	56°/38°	0%	NNW 4 mph	59%
TUE NOV 20		Sunny	61°/42°	10%	NNE 5 mph	61%
WED NOV 21		PM Showers	59°/44°	40%	E 6 mph	69%
THU NOV 22		Partly Cloudy	61°/50°	10%	SE 6 mph	78%

# Arrivals and Departures per Runway During Preferential Hours for the week of November 4th - 10th



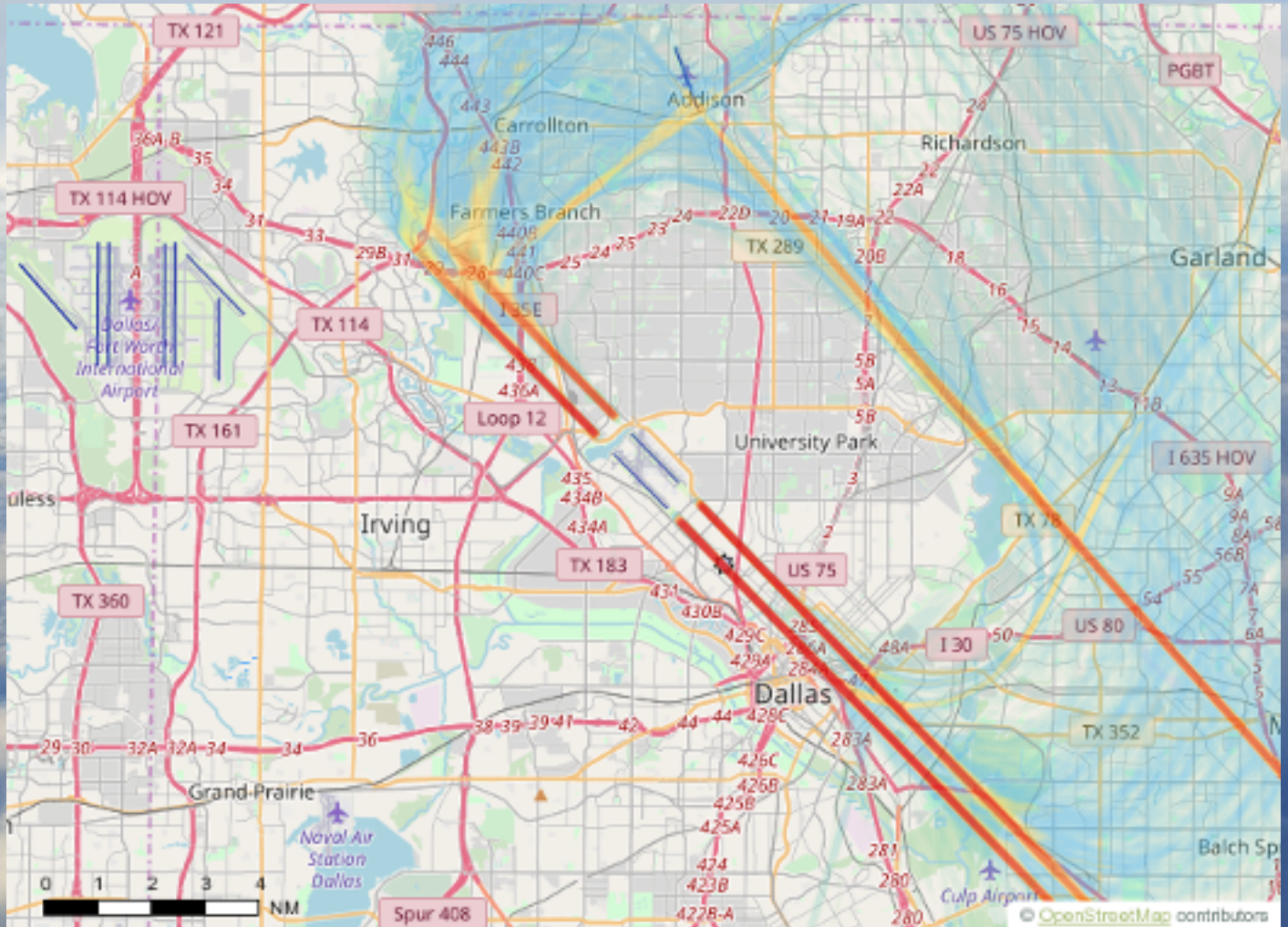
# Departures

for the week of November 4th - 10th



# Arrivals

for the week of November 4th - 10th



# closures

## RUNWAY & TAXIWAY CLOSURES:

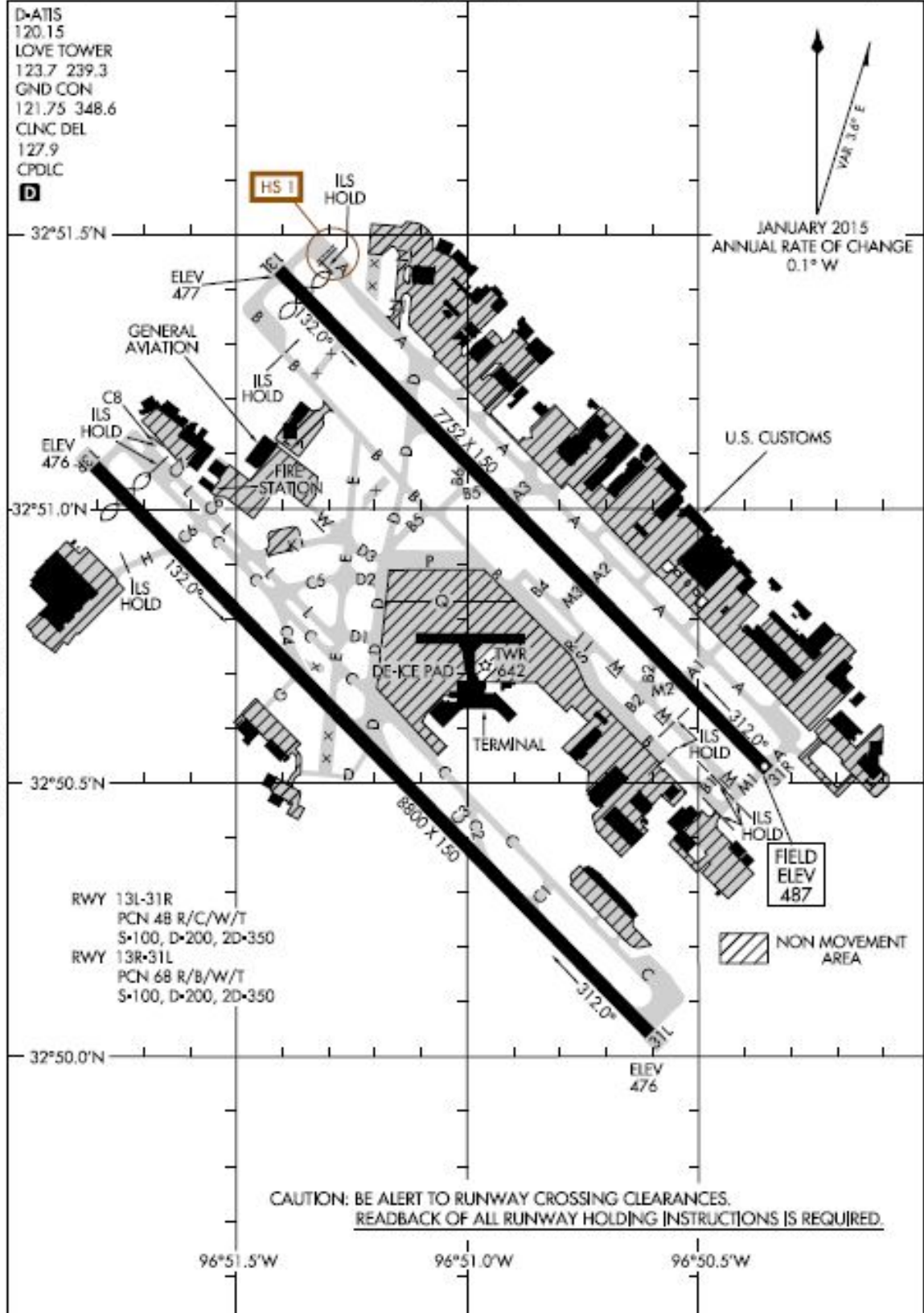
### NEXT 7 DAYS

- Runway 13R/31L closed nightly on Sundays, Mondays, Tuesdays, Thursdays, Fridays, and Saturdays for survey work 2300-0600 – weather permitting. There will be associated Taxiway closures coordinated nightly for coring operations as well. **TO RESUME ON MON/NOV 26th**
- Thurs/Nov 8th – Sat/Nov 17th 0730-1730 (no closure on Sun/Nov11): Taxiway B6 closed, Taxiway B5 between 13L/31R and B closed daily.
- Thurs/Nov 15th 1200-1700: Taxiway C closed between D and C4, Taxiway E closed between D1 and 13R/31L. After work is complete, area will open and then OPS will close Taxiway L between C5 and E, Taxiway D1 closed, and Taxiway E closed between D2 and C.
- Fri/Nov 16th 2300-2359: Taxiway B closed between B2 and R, Taxiway P closed, Taxiway S closed. Access to back alley gates via Taxiway R.
- Fri/Nov 16th 2300-Sat/Nov 17th 0600: Taxiway C5 closed between L and E, Taxiway D2 closed, Taxiway E closed between D1 and D3.
- Fri/Nov 16th TBD – Sat/Nov 17th 0600: Taxiway D3/E/W/K intersection closed to reestablished painted markings to reopen Taxiway E between Tiger Apron and D3.
- Sat/Nov 17th 0000-0100: Taxiway B closed between B4 and S, Taxiway P closed, Taxiway R closed, SWA Gates 1 and 2 closed – coordinated with airline. Access to back alley gates via Taxiway S.
- FAA Flight Check for 13L/31R scheduled for Nov 15th – 17th between 2300 and 0600.

18256  
**AIRPORT DIAGRAM**

AI-106 (FAA)

**DALLAS LOVE FIELD (DAL)**  
 DALLAS, TEXAS



S-C-2, 13 SEP 2018 to 11 OCT 2018

S-C-2, 13 SEP 2018 to 11 OCT 2018

**AIRPORT DIAGRAM**  
 18256

DALLAS, TEXAS  
**DALLAS LOVE FIELD (DAL)**

In an effort to serve you better, Dallas Love Field has opened the Airport Communications Center (ACC) for your use. The ACC is staffed 24 hours per day to direct your airport related concerns. If you are submitting an aircraft noise complaint, please call the ACC at 214-670-LOVE (5683).



## on the radar

8008 Herb Kelleher Way    214-670-5683    [www.dallas-lovefield.com](http://www.dallas-lovefield.com)    [AVINoise@dallascityhall.com](mailto:AVINoise@dallascityhall.com)