

# on the radar

october twelfth two thousand eighteen

## LFEAC







10/25/2018

The next LFEAC meeting will be at 6 p.m. Thursday, October 25, 2018 at the Administration Building located at 7555 Lemmon Ave. Please join us and be prepared to discuss any environmental concerns you may have, including noise.

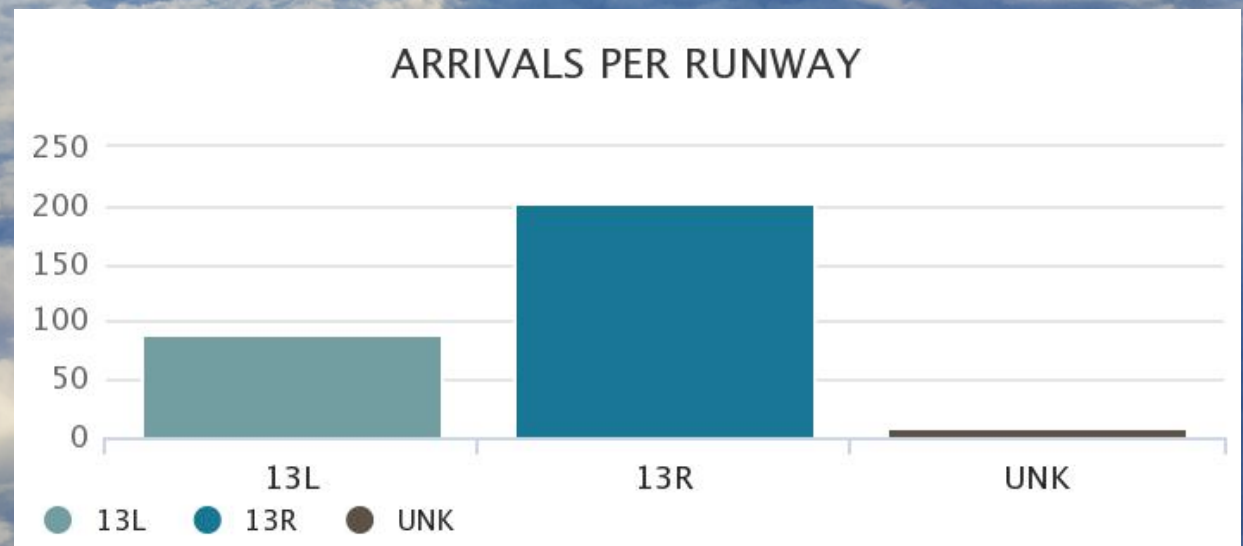
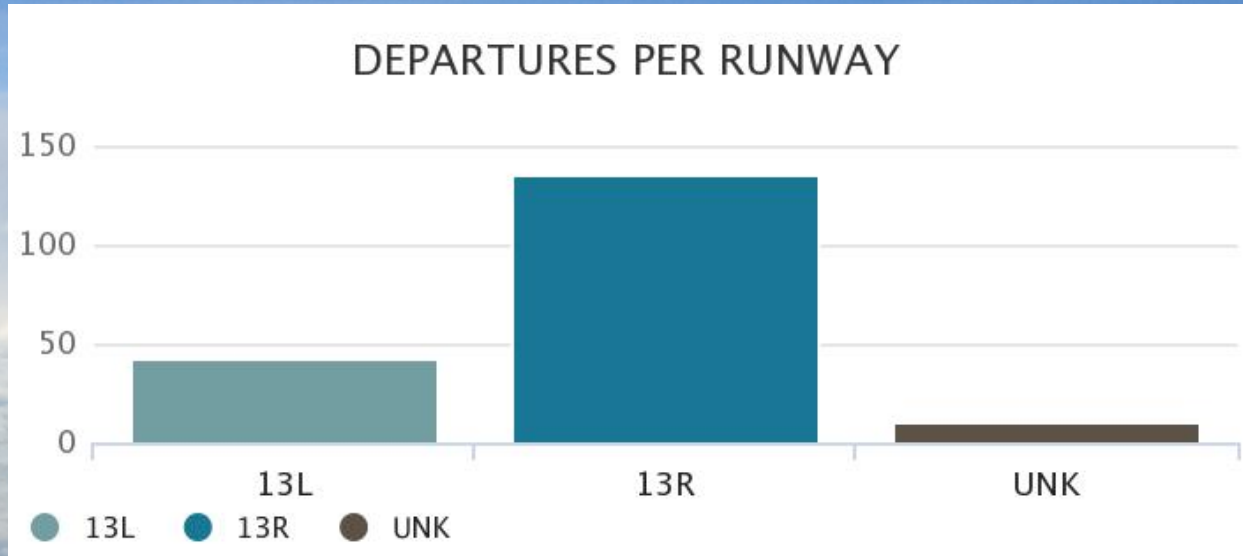


"Dallas Love Field Airport  
has a history as bright as its  
future."

## Weather Forecast

DAY		DESCRIPTION	HIGH / LOW	PRECIP	WIND	HUMIDITY
TODAY OCT 12		PM Thunderstorms	69°/60°	↗ 80%	SSE 8 mph	77%
SAT OCT 13		Thunderstorms	67°/62°	↗ 100%	ESE 11 mph	92%
SUN OCT 14		Thunderstorms	71°/45°	↗ 100%	WNW 10 mph	92%
MON OCT 15		Rain	49°/45°	↗ 100%	N 18 mph	86%
TUE OCT 16		Rain	49°/47°	↗ 90%	N 14 mph	84%
WED OCT 17		Showers	57°/50°	↗ 50%	NNE 9 mph	68%
THU OCT 18		Showers	60°/52°	↗ 50%	NE 8 mph	74%

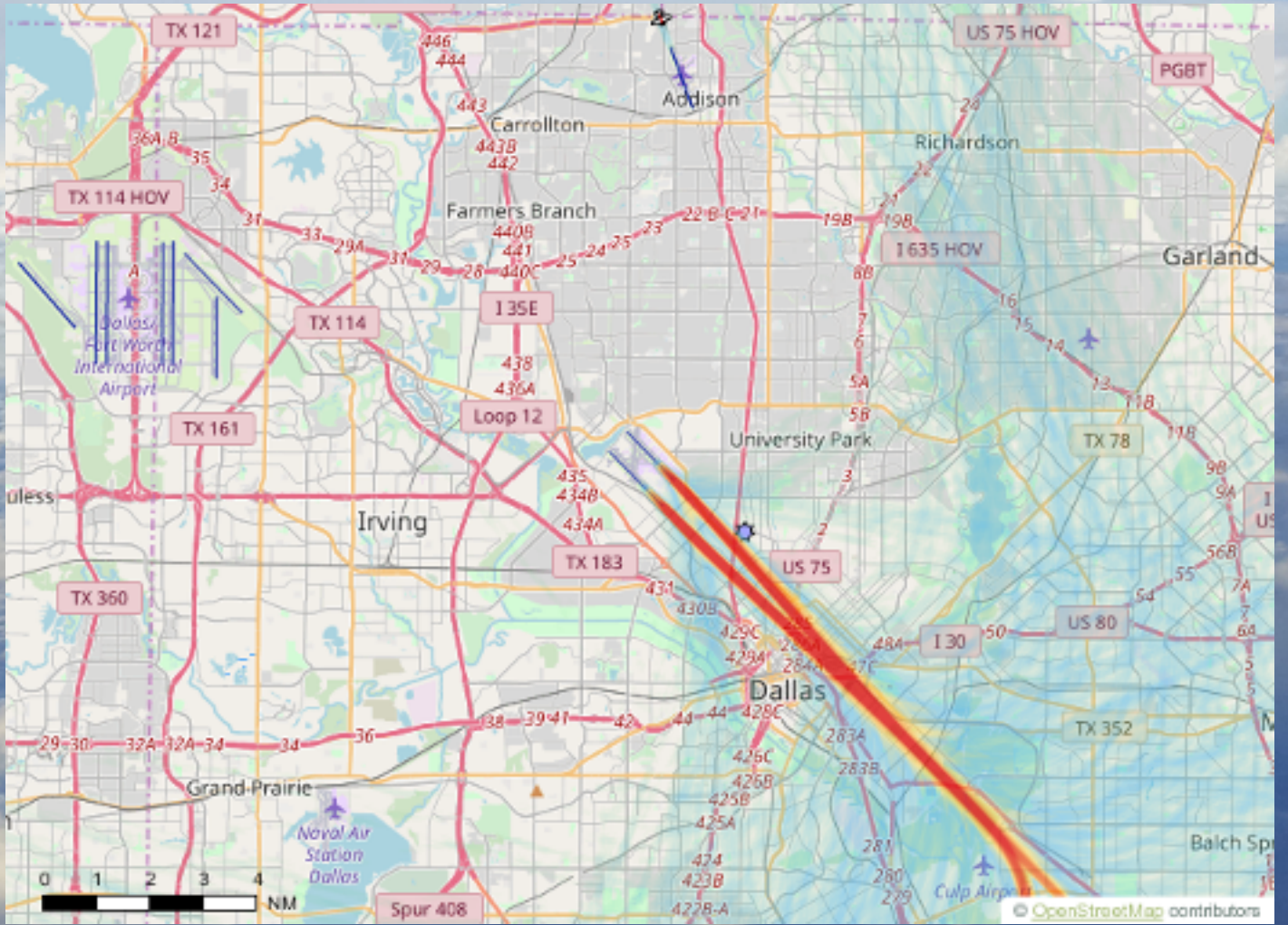
# Arrivals and Departures per Runway During Preferential Hours for the week of September 30th - October 6th





# Departures

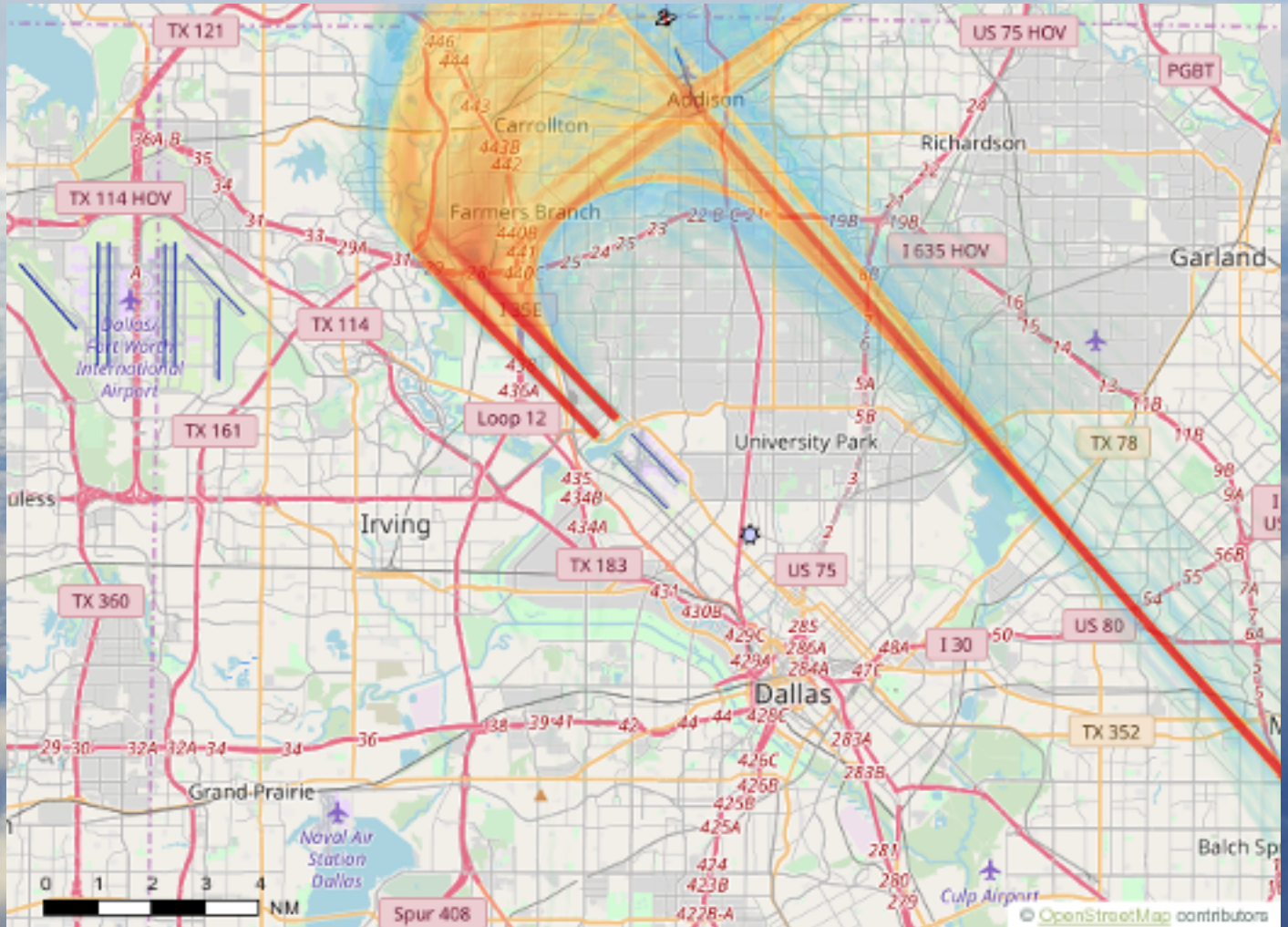
for the week of September 30th - October 6th





# Arrivals

for the week of September 30th - October 6th





# closures

## RUNWAY & TAXIWAY CLOSURES:

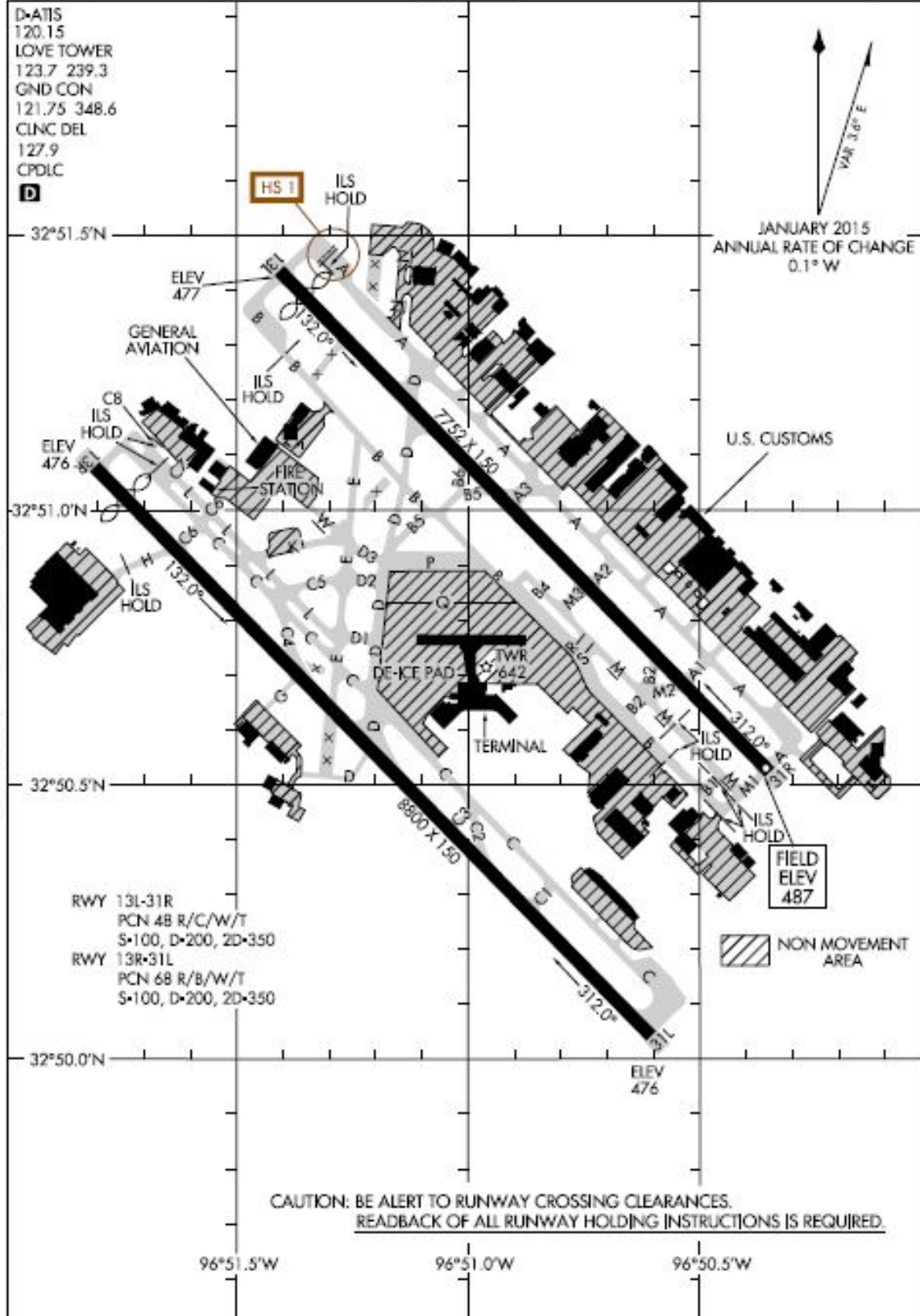
### NEXT 7 DAYS

- Runway 13R/31L closed nightly on Sundays, Mondays, Tuesdays, and Thursdays for survey work 2300-0600 - weather permitting.
- Ongoing 2300-0600: Nightly rolling closures of Airfield Taxiways for painting airfield markings and sealing shoulders. Closures will be coordinated nightly with ATC.
- Thurs/Oct 11th 0900-1300: Taxiway D closed between 13R/31L and C. Taxiway C closed between Taxiway E and C3.
- Thurs/Oct 11th 1400-1600: Taxiway P closed between Taxiway B and D.
- Thurs/Oct 11th 1800-Fri/Oct 12th 0600: Taxiway C closed between 13R approach end and C8
- Fri/Oct 12th 0900-1600: Taxiway P closed between Taxiway B and D.
- Sun/Oct 14th 2300 - Mon/Oct 15th 0600: Runway 13R/31L closed for AFM.
- Wed/Oct 17th 2300 - Thurs/Oct 18th 0600: Runway 13L/31R closed for AFM.
-

18256  
**AIRPORT DIAGRAM**

AI-106 (FAA)

**DALLAS LOVE FIELD (DAL)**  
 DALLAS, TEXAS



S-C-2, 13 SEP 2018 to 11 OCT 2018

S-C-2, 13 SEP 2018 to 11 OCT 2018

**AIRPORT DIAGRAM**  
 18256

DALLAS, TEXAS  
**DALLAS LOVE FIELD (DAL)**



In an effort to serve you better, Dallas Love Field has opened the Airport Communications Center (ACC) for your use. The ACC is staffed 24 hours per day to direct your airport related concerns. If you are submitting an aircraft noise complaint, please call the ACC at 214-670-LOVE (5683).



## on the radar

8008 Herb Kelleher Way

214-670-5683

[www.dallas-lovefield.com](http://www.dallas-lovefield.com)

[AVINoise@dallascityhall.com](mailto:AVINoise@dallascityhall.com)