

on the radar

september twenty-eighth two thousand eighteen

LFEAC







10/18/2018

The next LFEAC meeting will be at 6 p.m. Thursday, October 18, 2018 at the Administration Building located at 7555 Lemmon Ave. Please join us and be prepared to discuss any environmental concerns you may have, including noise.

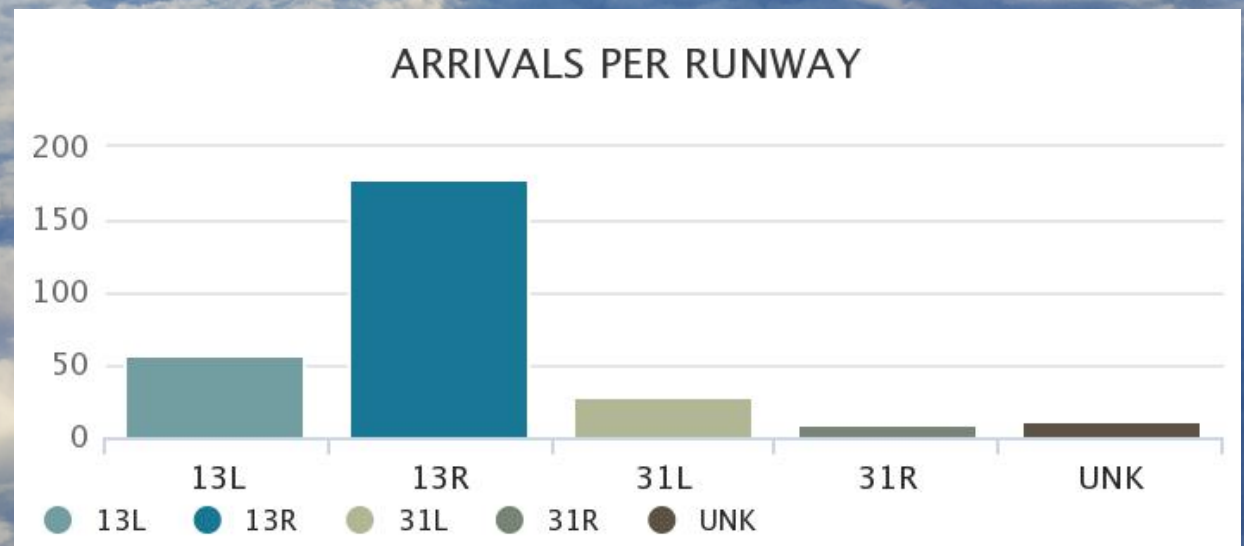
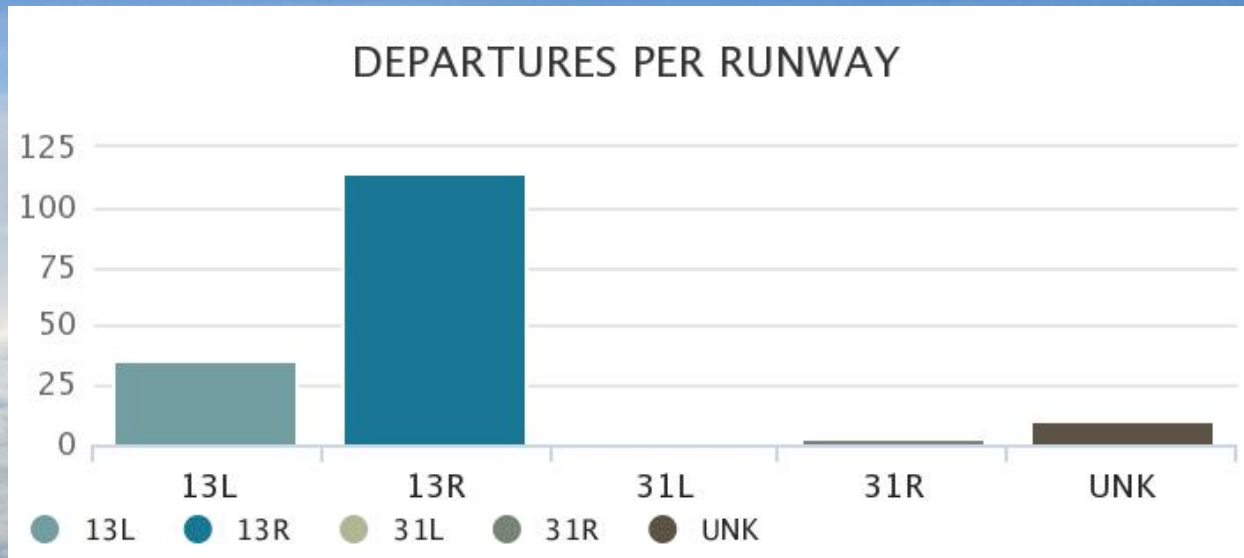


"Dallas Love Field Airport
has a history as bright as its
future."

Weather Forecast

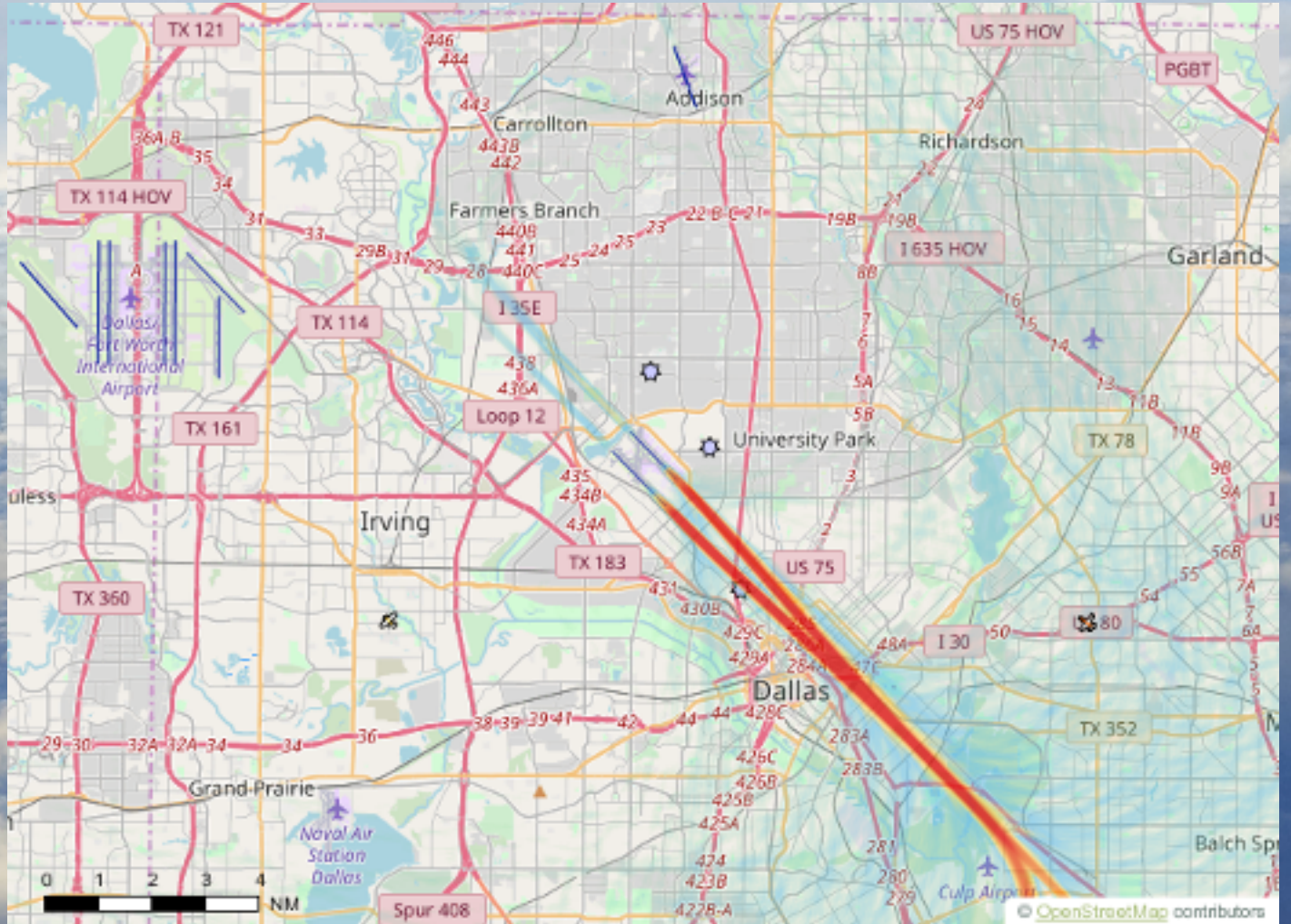
DAY		DESCRIPTION	HIGH / LOW	PRECIP	WIND	HUMIDITY
TODAY SEP 28		Mostly Sunny	84°/68°	0%	SE 8 mph	72%
SAT SEP 29		Partly Cloudy	84°/71°	20%	SE 9 mph	78%
SUN SEP 30		Partly Cloudy	86°/70°	20%	SSE 9 mph	75%
MON OCT 1		Partly Cloudy	86°/72°	20%	S 9 mph	75%
TUE OCT 2		AM Clouds/PM Sun	85°/73°	20%	SSE 11 mph	77%
WED OCT 3		Partly Cloudy	85°/72°	20%	S 11 mph	78%
THU OCT 4		Partly Cloudy	84°/71°	10%	S 9 mph	78%

Arrivals and Departures per Runway During Preferential Hours for the week of September 16th - 22nd



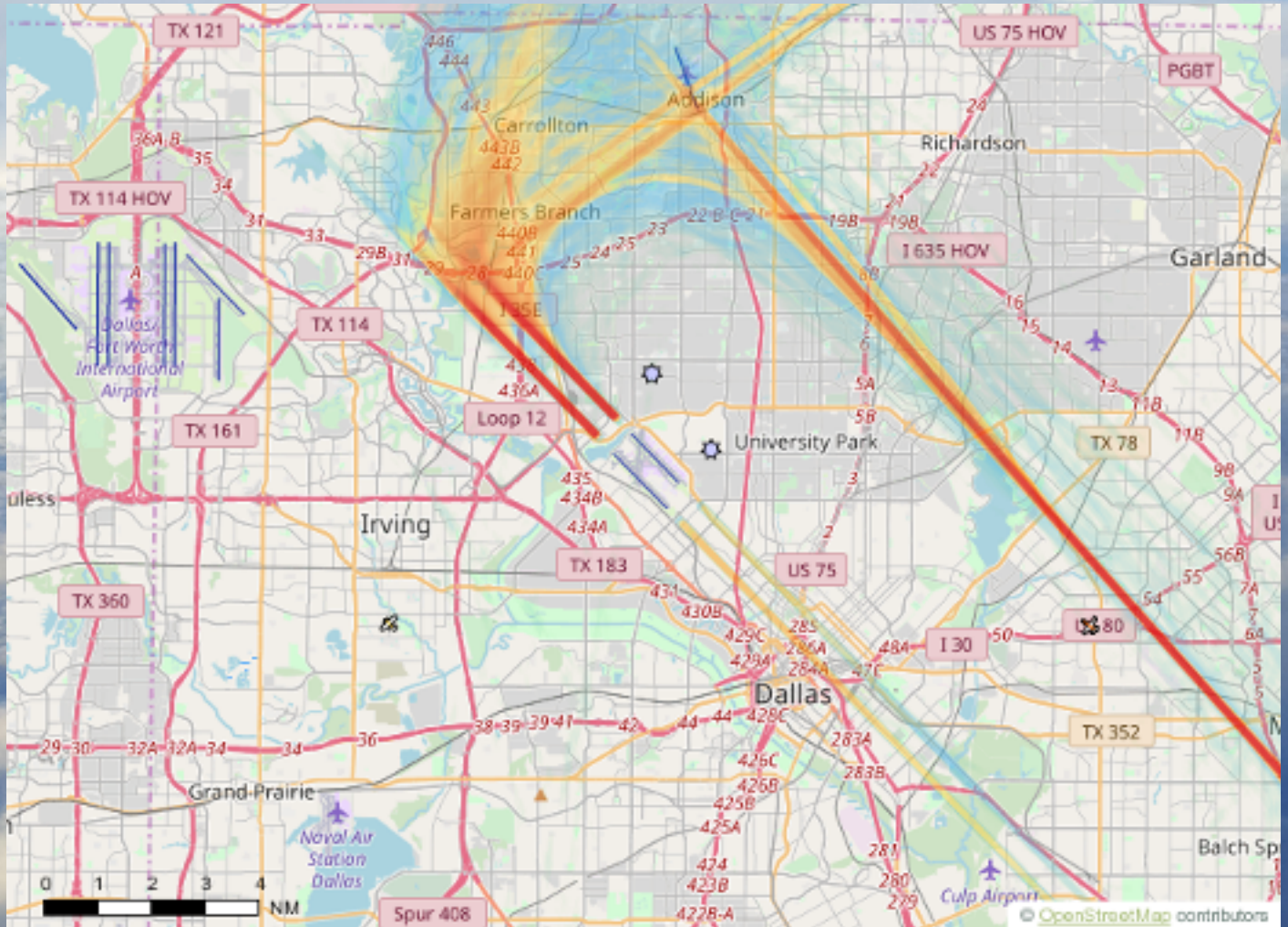
Departures

for the week of September 16th - 22nd



Arrivals

for the week of September 16th - 22nd



closures

RUNWAY & TAXIWAY CLOSURES:

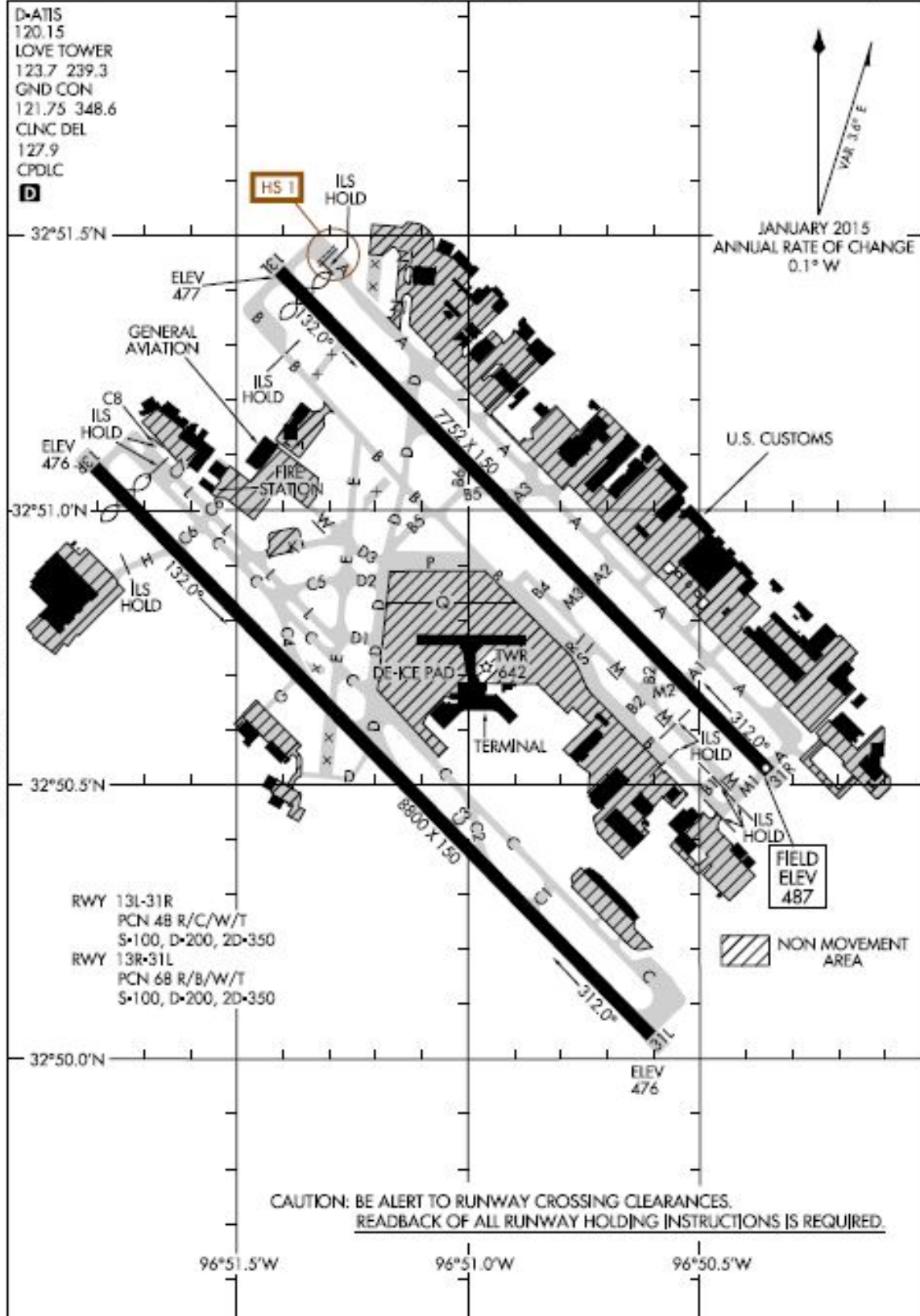
NEXT 7 DAYS

- Ongoing 2300-0600: Nightly rolling closures of Taxiway A and then Taxiway B for airfield markings and sealing shoulders. Closures will be coordinated nightly with ATC.
- Thurs/Sept 27th 0700 – Thurs/Oct 11th 1700: Taxiway C5 closed between L and E, Taxiway D2 closed, Taxiway E closed between D1 and D3.
- Thurs/Sept 27th 2300 – Fri/Sept 28th 0600: Runway 13R/31L closed for AFM and ELEC.
- Sat/Sept 29th 0700-1700: Runway 13L/31R closed for FAA.
- Sat/ Sept 29th 0700 – 1700: Taxiway A closed between 31R and A1, Taxiway M1 closed between 31R and M.
- Sat/Sept 29th 1000-1030: Taxiway B closed between B5 and P for survey.
- Sun/Sept 30th 2300 – Mon/Oct 1st 0600: Runway 13R/31L closed for AFM.
- Mon/Oct 1st 0800-1600: Taxiway D closed between 13L and Taxiway B.
- Tues/Oct 2nd 0800-1600: Taxiway B5 closed between 13L and Taxiway B. Taxiway B6 closed. (May occur on Monday if Taxiway D work completes early)
- Wed/Oct 3rd 2300 – Thurs/Oct 4th 0600: Runway 13L/31R closed for AFM.

18256
AIRPORT DIAGRAM

AI-106 (FAA)

DALLAS LOVE FIELD (DAL)
DALLAS, TEXAS



AIRPORT DIAGRAM
18256

DALLAS, TEXAS
DALLAS LOVE FIELD (DAL)

In an effort to serve you better, Dallas Love Field has opened the Airport Communications Center (ACC) for your use. The ACC is staffed 24 hours per day to direct your airport related concerns. If you are submitting an aircraft noise complaint, please call the ACC at 214-670-LOVE (5683).



on the radar

8008 Herb Kelleher Way 214-670-5683 www.dallas-lovefield.com AVINoise@dallascityhall.com