



*April 23, 2019*

# Good Neighbor Program Update

Dallas Love Field Airport

# PURPOSE OF MEETING

- Provide an update on Good Neighbor Program (GNP)
- Present an update on various projects
  - Braniff Centre
  - Bluffview Intersection
  - Entry Road Enhancements
  - Runway Reconstruction
- Engage community on ideas for future GNP projects

# WHAT IS THE GOOD NEIGHBOR PROGRAM?

- The GNP is our way to connect with the community and gather input for future projects and planning
- It encompasses all projects and activities outside of the runway and terminal
- We are an airport that happens to be in the middle of a community. However, our goal is to be a community that just happens to be located around an airport
- Supports City of Dallas' goals of developing livable, walkable and interconnected neighborhoods



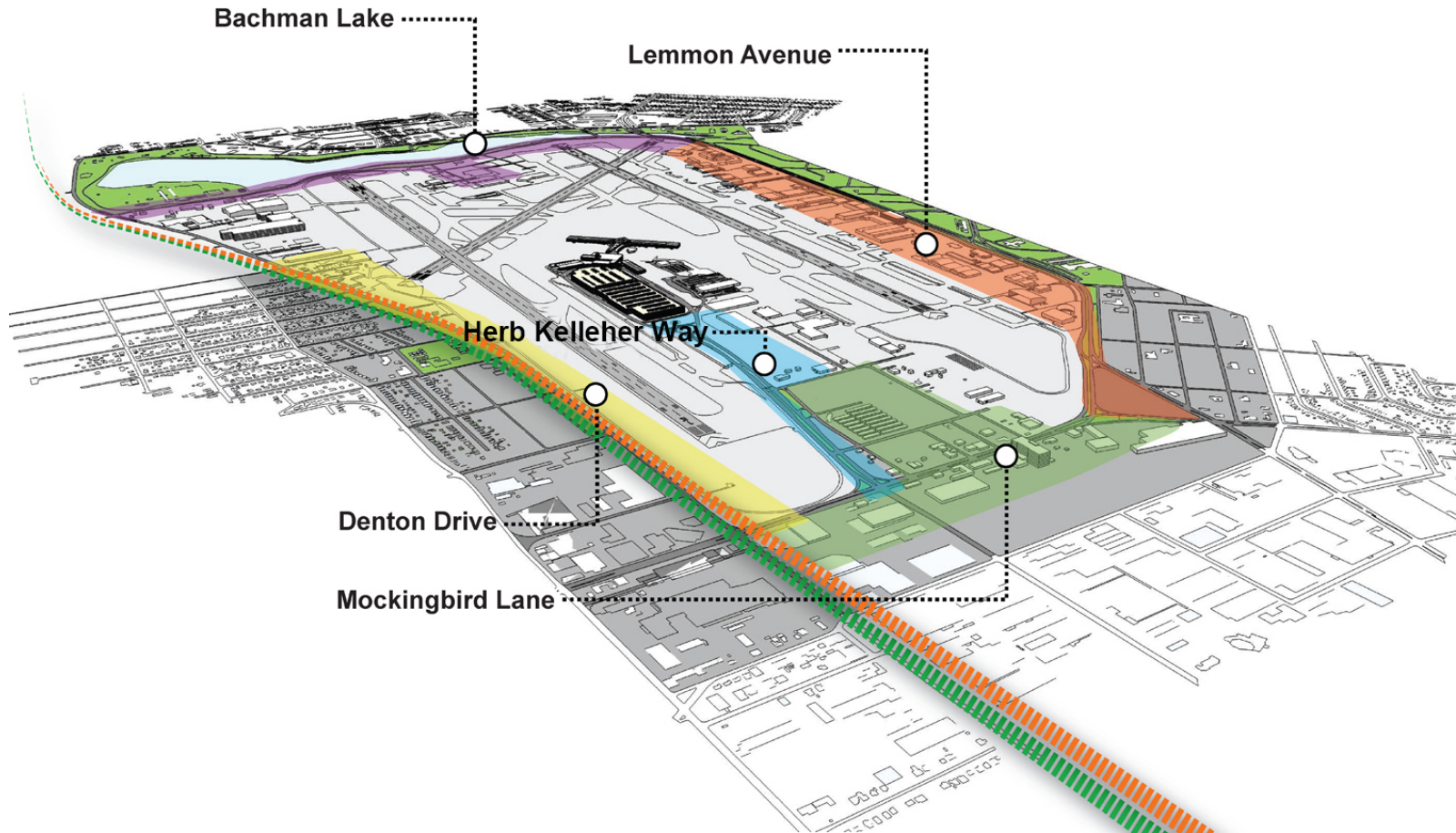
# WHAT IS THE GOOD NEIGHBOR PROGRAM?

- GNP goals
  - Off-Airport urban design, landscaping & beautification
  - Encouragement of recreational activities including parks & trails
  - Signage and way-finding initiatives
  - Pedestrian improvements
  - Traffic improvements
  - Drainage improvements



Example of a viewing area

# GOOD NEIGHBOR PROGRAM TARGET AREAS



# HISTORY OF GOOD NEIGHBOR PROGRAM

- As part of the Master Plan Update, an initiative was developed in 2012 to enhance the physical and economic development of Dallas Love Field and its bordering neighborhoods
- The GNP initiative included a public involvement program intended to incorporate community input into the decisions made regarding development and improvements around Dallas Love Field

# HISTORY OF GOOD NEIGHBOR PROGRAM CONT.

- A series of community meetings was held in 2012 and again in 2015 to gather the community's input
- The top three priorities identified at that time were:
  - Roadway landscaping and signage
  - Pedestrian connections (continuous sidewalks, connected recreational paths, high visibility crosswalks, signalized intersections, sidewalk lighting, etc.)
  - Buffers (visual and physical) around the airport

# GOOD NEIGHBOR PROGRAM IMPROVEMENTS

- Since 2015, a number of improvements have been made
- Specifically with respect to roadway landscaping and signage:
  - Greens and shrubbery planted near airport entrance
  - Irrigation and landscaping, including seasonal flowers, installed outside of Administration Building





# GOOD NEIGHBOR PROGRAM IMPROVEMENTS CONT.

- Pedestrian Connections
  - Sidewalks added along Mockingbird Avenue near Love Field entrance and from Herb Kelleher Way to Denton Drive



# GOOD NEIGHBOR PROGRAM IMPROVEMENTS CONT.

- Buffers
  - Updated chain-link to 8 foot wrought iron fence around perimeter of Love Field



# GOOD NEIGHBOR PROGRAM IMPROVEMENTS CONT.

- New signs were installed/upgraded along Lemmon Avenue
- 11 in total north and southbound



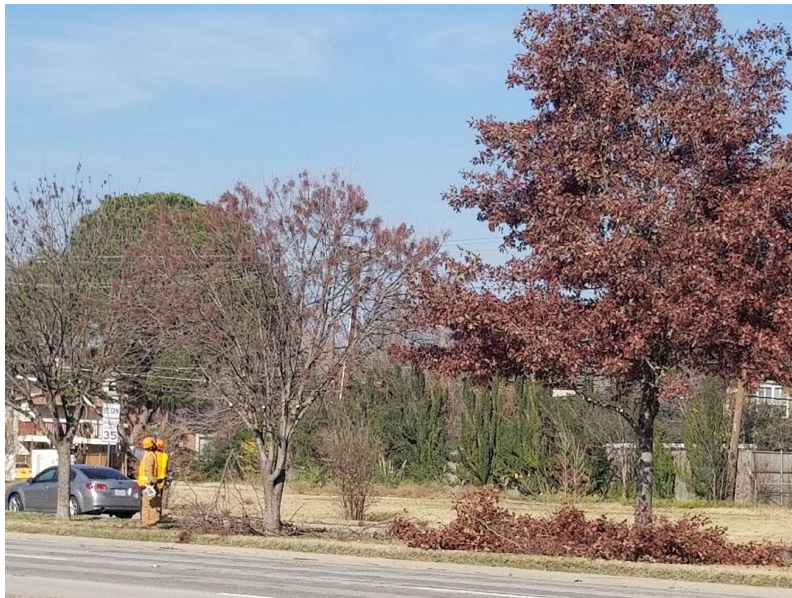
# GOOD NEIGHBOR PROGRAM IMPROVEMENTS CONT.

- Replaced and added several directional and regulatory signs within the airport perimeter that will provide clarification to customers
  - No U-Turn
  - No Left Turn
  - No Littering
  - Exit
- Signs were placed on Herb Kelleher Way and around the perimeter fence
- Updated signs will make it easier for customers to arrive and leave the airport and create a safer environment



# GOOD NEIGHBOR PROGRAM IMPROVEMENTS CONT.

- In response to community input, trees were recently trimmed along Lemmon Avenue



# GOOD NEIGHBOR PROGRAM IMPROVEMENTS CONT.

- A goal of the Good Neighbor Program is to enhance urban design, landscaping and beautification of our perimeter
- We actively work to enhance public spaces with art
  - Contrails art sculpture dedicated in 2017
  - Contrails is a site specific sculpture, inspired by the unique cloud forms created in the wake of a plane
- Travel + Leisure magazine ranked Dallas as one of the top airports in the U.S., specifically mentioning the public art program

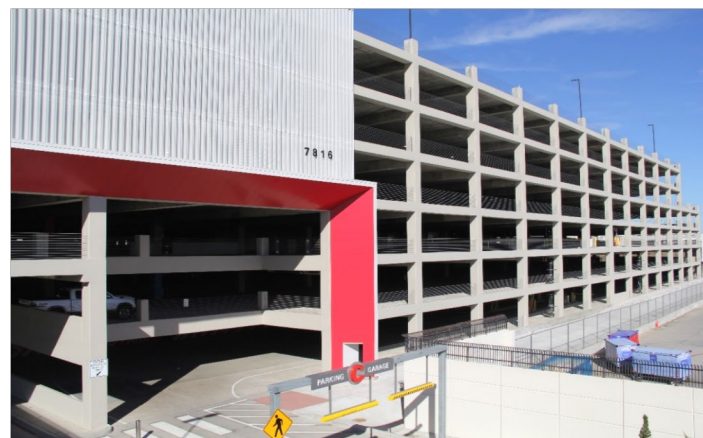


# COMMUNITY OUTREACH & ENGAGEMENT EVENTS

- In addition to physical improvements, we also host a number of events which benefit the community
  - Attend career days for elementary schools and colleges in DISD and surrounding cities
  - Attend seminars for retirees and speaks at the local recreation centers
  - Sponsor quarterly community events – Community Movie Nights
  - 5K on the Runway (May 18, 2019)
  - Turn-Up event

# RECENT DEVELOPMENT & PROJECTS

- Within the past several few months, a number of projects have been completed at Love Field
  - New cell phone lot was opened at Aubrey and Hawes Ave
  - Corner lot at Hawes & Herb Kelleher and Mockingbird has been opened to the Uber/Lyft drivers
  - Garage C opened on November 1, 2018 with almost 5,000 spaces on 9 levels of parking





# RECENT DEVELOPMENT & PROJECTS CONT.

## THE BRANIFF CENTRE – 7701 LEMMON AVE.

- There is also private development occurring at the site of the old Braniff Centre
- Features executive terminals with private courtyard and parking entrance
- Includes:
  - Dealerships
  - Office space
  - Hangars
  - Restaurant
  - Some retail space



BRANIFF HEADQUARTERS – ca. 1958

# RECENT DEVELOPMENT & PROJECTS CONT.

## THE BRANIFF CENTRE- PROPOSED RESTORATION



# RECENT DEVELOPMENT & PROJECTS CONT.

## THE BRANIFF CENTRE-PROPOSED RESTORATION



# RECENT DEVELOPMENT & PROJECTS CONT.

## THE BRANIFF CENTRE-PLANET LINCOLN SHOWROOM



# RECENT DEVELOPMENT & PROJECTS CONT.

## BLUFFVIEW INTERSECTION

- Currently enhancing the pedestrian features at the intersection at Lemmon Avenue and Bluffview, along with operational improvements



# RECENT DEVELOPMENT & PROJECTS CONT.

## ENTRY ROAD ENHANCEMENTS

- We are about to embark on a comprehensive plan to redesign the airport entryway
  - Project will include lighting, pedestrian paving, fencing, landscaping, signage and public art
  - Upgrades will be made to Herb Kelleher Way, Mockingbird Lane and Airdrome Drive
  - RFB for Complete Design expected be awarded by July/Aug 2019

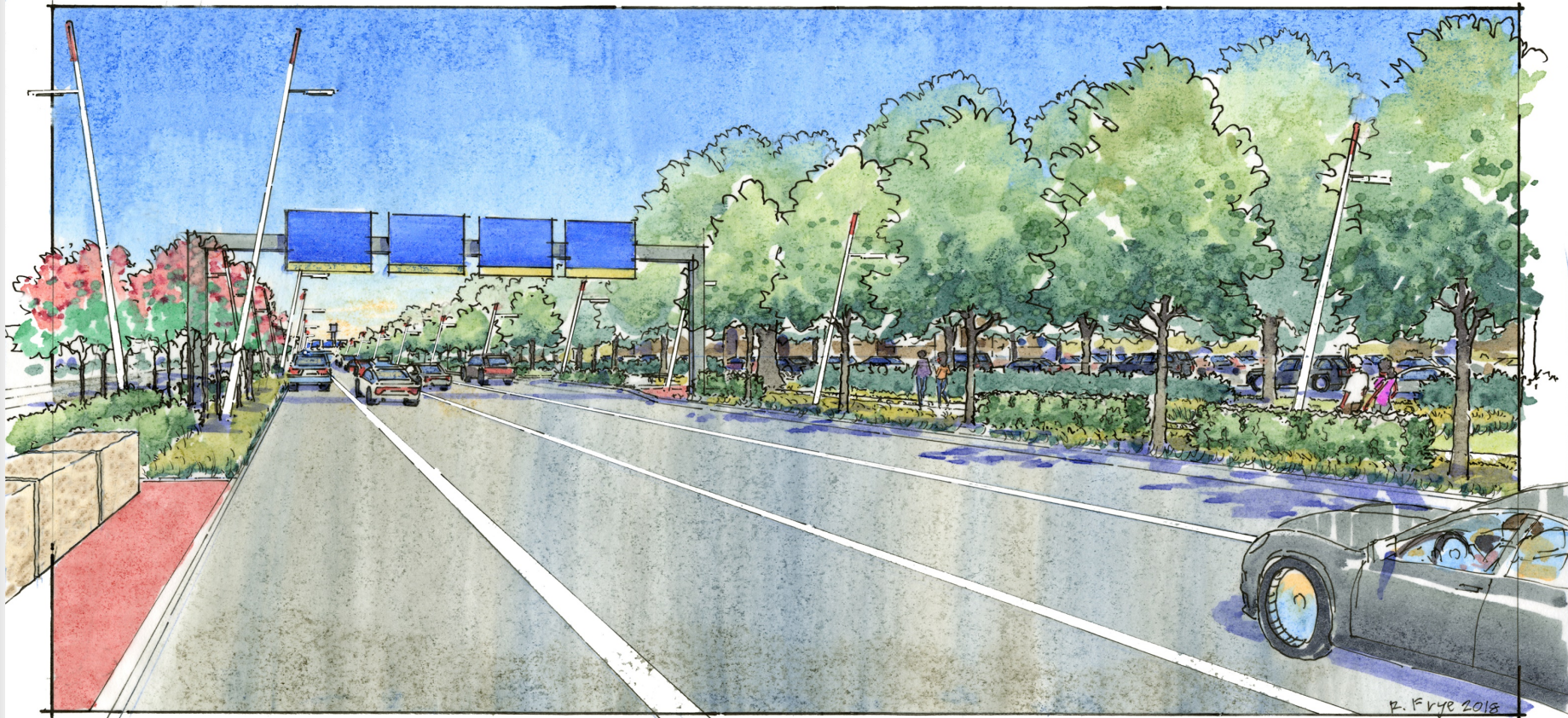
# RECENT DEVELOPMENT & PROJECTS CONT.

## ENTRY ROAD ENHANCEMENTS



# RECENT DEVELOPMENT & PROJECTS CONT.

## ENTRY ROAD ENHANCEMENTS



HERB KELLEHER WAY STREETScape

NOTES: PLAN IS PRELIMINARY AND CONCEPTUAL, ALL LAYOUTS ARE APPROXIMATE.



# RECENT DEVELOPMENT & PROJECTS CONT.

## ENTRY ROAD ENHANCEMENTS



### HERB KELLEHER WAY STREETScape - SECTION

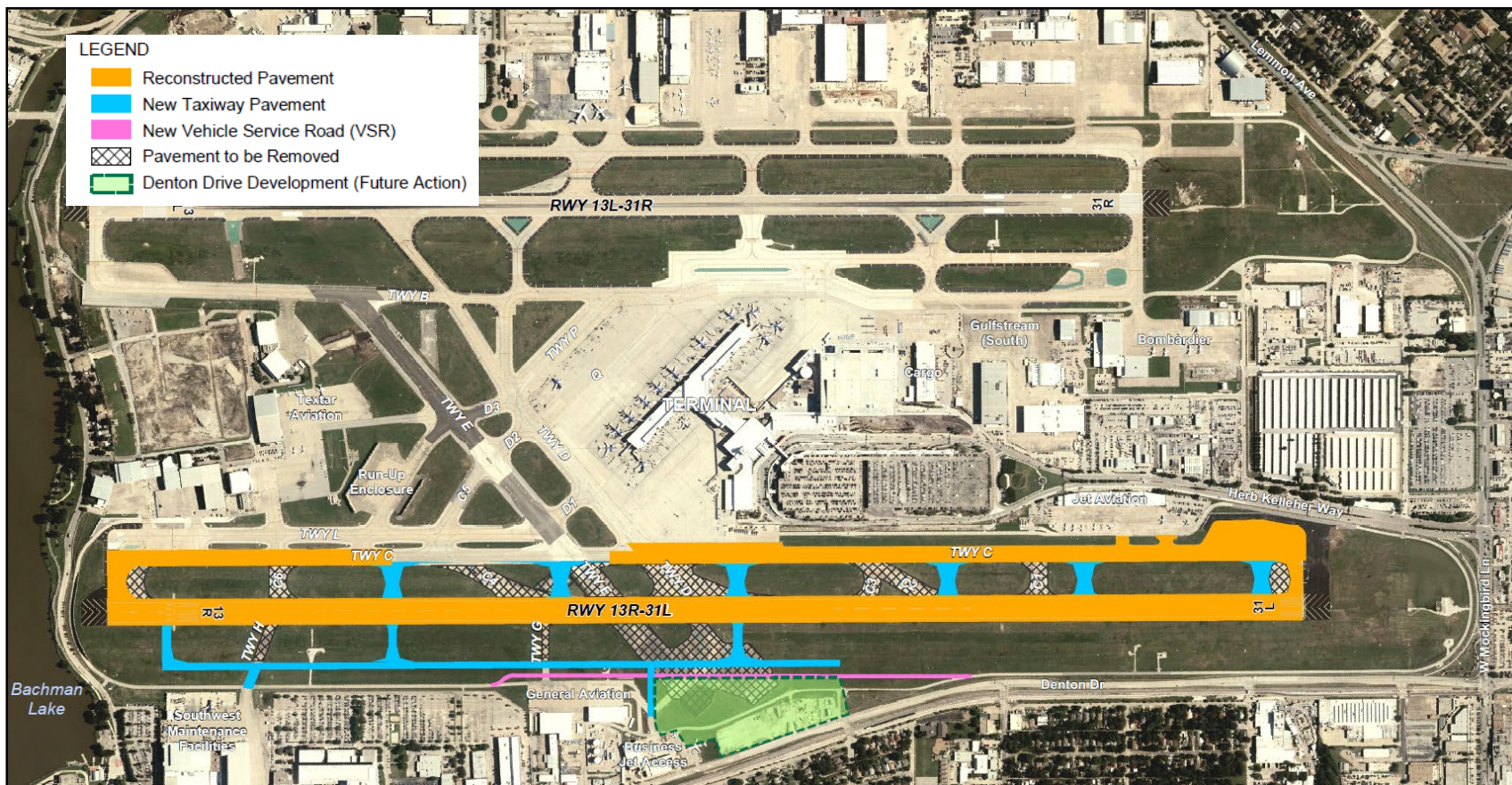
# RECENT DEVELOPMENT & PROJECTS CONT.

## RUNWAY 13R-31L RECONSTRUCTION PROJECT

- We are also about to undertake reconstruction of Runway 13R-31L
- Why: The project is needed to address the condition of Runway 13R-31L, accompanying taxiway deficiencies to meet FAA design criteria and to reduce airfield inefficiencies
  - Runway overlay has performed beyond its effective 20-year design life per FAA pavement design criteria. Last major rehabilitation completed in 1990
  - Multiple taxiway pavements have also deteriorated to unacceptable levels
  - Multiple taxiway intersections with Runway 13R-31L include wide expanses of pavement that are not compliant with FAA taxiway geometry design criteria
  - Runway 13R-31L currently has a non-standard 400' wide safety area. The project will address this by regrading the safety area to comply with the FAA standard 500' wide safety area

# RUNWAY 13R-31L RECONSTRUCTION PROJECT

*As analyzed in the Draft Environmental Assessment*



# RECENT DEVELOPMENT & PROJECTS CONT.

## RUNWAY 13R-31L RECONSTRUCTION PROJECT

- Reconstruction will involve the full removal of all pavement
- The new runway will include recycled materials, including using the existing runway
- The project will include:
  - Removal of runway and replacement within the same footprint and elevation
  - New connectors to allow aircraft off the runway quickly
  - New drainage to allow the area to drain rapidly
- During reconstruction, all landings and takeoffs will occur on the Lemmon Ave runway (13L-31R)

# RECENT DEVELOPMENT & PROJECTS CONT.

## RUNWAY 13R-31L RECONSTRUCTION PROJECT

- Environmental Assessment (EA) conducted to analyze the impacts of construction
- Effects expected outside Airport fence
  - Establish construction entrance off Denton Drive near Gilford Street to mitigate impact of construction traffic on local roadways
  - Proposed improvements to stormwater drainage system and adherence to SWPPP during construction
  - No impacts to Bachman Lake or Shorecrest Drive
  - Construction emissions
  - Temporary noise impacts

# RUNWAY 13R-31L RECONSTRUCTION PROJECT



**Note: 65 DNL contour represents the federal standard for residential land use compatibility**

# RECENT DEVELOPMENT & PROJECTS CONT.

## RUNWAY 13R-31L RECONSTRUCTION PROJECT

- Draft EA Next Steps:
  - Respond to Comments in Preliminary Final EA (*if any*)
  - FAA Review of Preliminary Final EA
  - FAA will likely issue a Finding of No Significant Impact (FONSI) by end of April 2019
- Anticipated Construction Schedule
  - Late 2020 through early 2022
  - 9-month runway closure beginning early 2021
- The City will provide updates on the project via the DAL website and future Good Neighbor meetings
- Mailings will be sent to noise affected residents prior to construction

# RECENT DEVELOPMENTS AND PROJECTS CONT.

## OTHER PROJECTS/DEVELOPMENTS AT LOVE FIELD

- As part of the Good Neighbor Program, we are looking at creating pocket parks, bike paths and a viewing area around Love Field
- DAL Streetscape Enhancements--Phase I Lemmon Avenue RFQ/RFP expected by May 2019
- In order to better hear from the community, we initiated community meetings with neighborhood HOAs
- Awarded 2018 Best Airport in customer experience by ASQ for North American Airports that serve 15-25 million passengers



# COMMUNITY INPUT

- We are here tonight because we believe in being a good neighbor
- Are the priorities which were identified in 2015 of roadway landscaping, pedestrian connections and buffers around the airport still your top priorities?
- Are there other things you would like to see in terms of community connections?
- What else can we do to be a good neighbor?

# CONTACT INFORMATION

**Mark Duebner, Director of Aviation**

214 670-6077

Dallas Love Field – Administration

7555 Lemmon Avenue Dallas, TX 75235-2852

Physical Address: 8008 Herb Kelleher, Dallas, TX 75235

Follow us—@dallaslovefield on Twitter, Facebook, Instagram, SnapChat, YouTube, & Pinterest

**[www.dallas-lovefield.com](http://www.dallas-lovefield.com)**

*Click on the Good Neighbor link*

**[www.goodneighborplan.com](http://www.goodneighborplan.com)**