

on the radar

july twelfth two thousand nineteen

LFEAC

07/18/2019

The next LFEAC meeting will be at 6 p.m. Thursday, July 18, 2019 at the Administration Building located at 7555 Lemmon Ave. Please join us and be prepared to discuss any environmental concerns you may have, including noise.


Be sure to check out our new Noise Lab web page!

<https://dal.noiselab.casper.aero/>

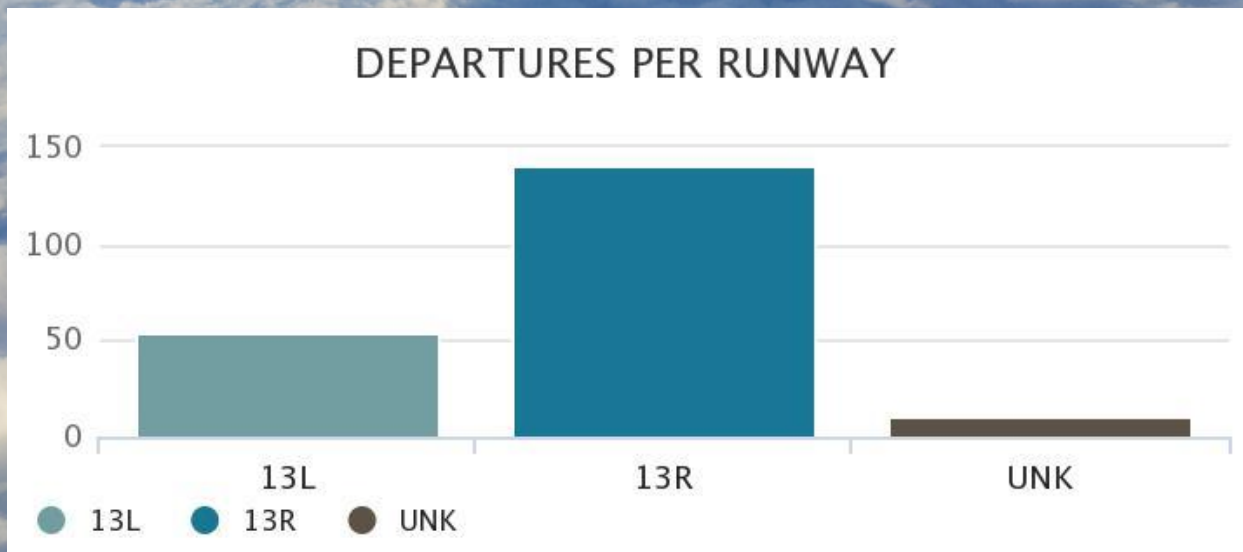
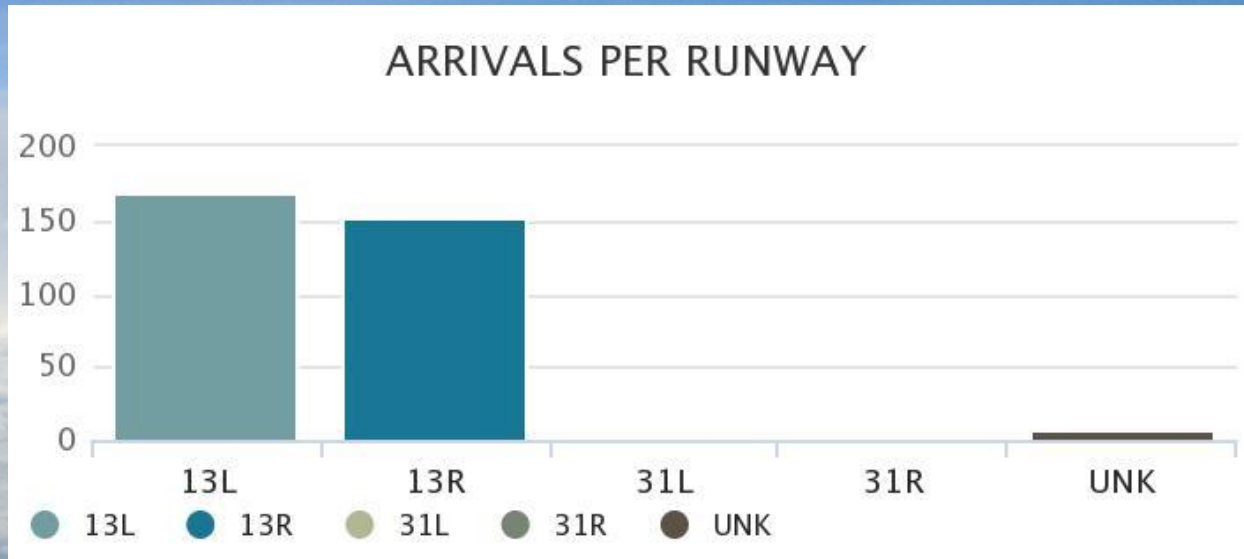


"Dallas Love Field Airport
has a history as bright as its
future."

Weather Forecast

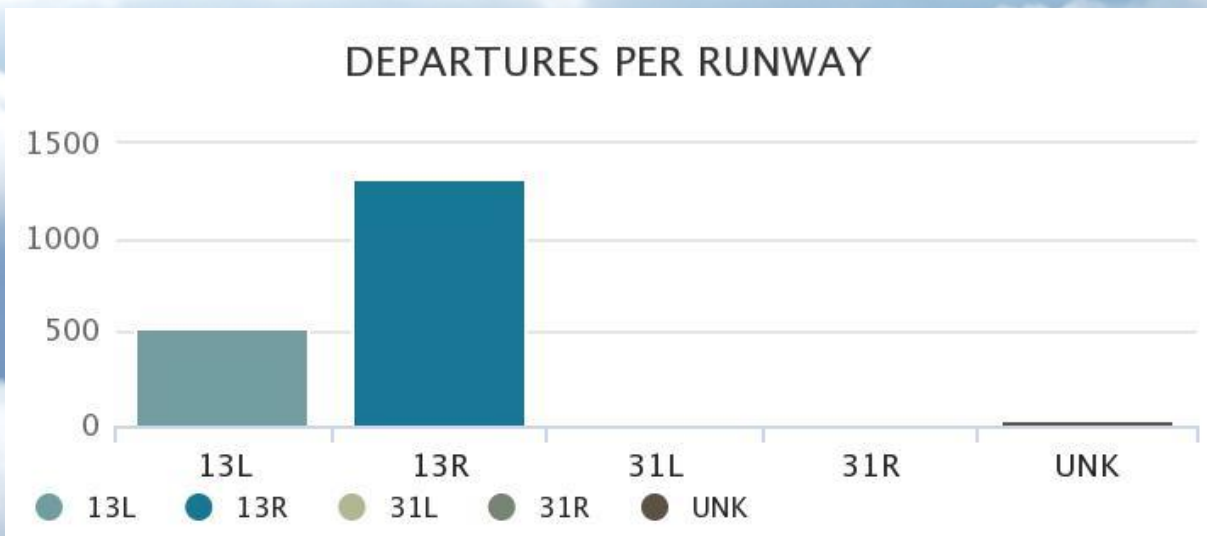
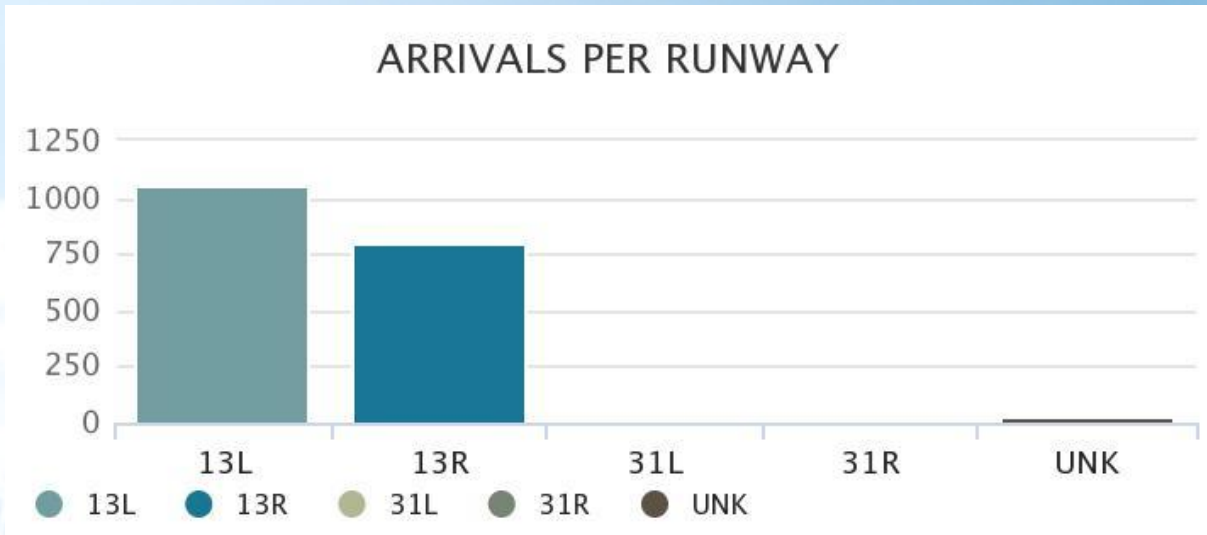
DAY		DESCRIPTION	HIGH / LOW	PRECIP	WIND	HUMIDITY
TODAY JUL 12		Sunny	94°/75°	0%	NE 10 mph	47%
SAT JUL 13		Partly Cloudy	95°/77°	20%	NE 12 mph	56%
SUN JUL 14		Partly Cloudy	91°/75°	10%	NNE 12 mph	57%
MON JUL 15		Partly Cloudy	93°/79°	20%	NNW 6 mph	55%
TUE JUL 16		Partly Cloudy	98°/80°	10%	SSW 10 mph	51%
WED JUL 17		Mostly Sunny	99°/79°	0%	S 12 mph	50%
THU JUL 18		Sunny	99°/79°	0%	S 12 mph	49%

Arrivals and Departures per Runway During Preferential Hours for the week of June 30th - July 6th



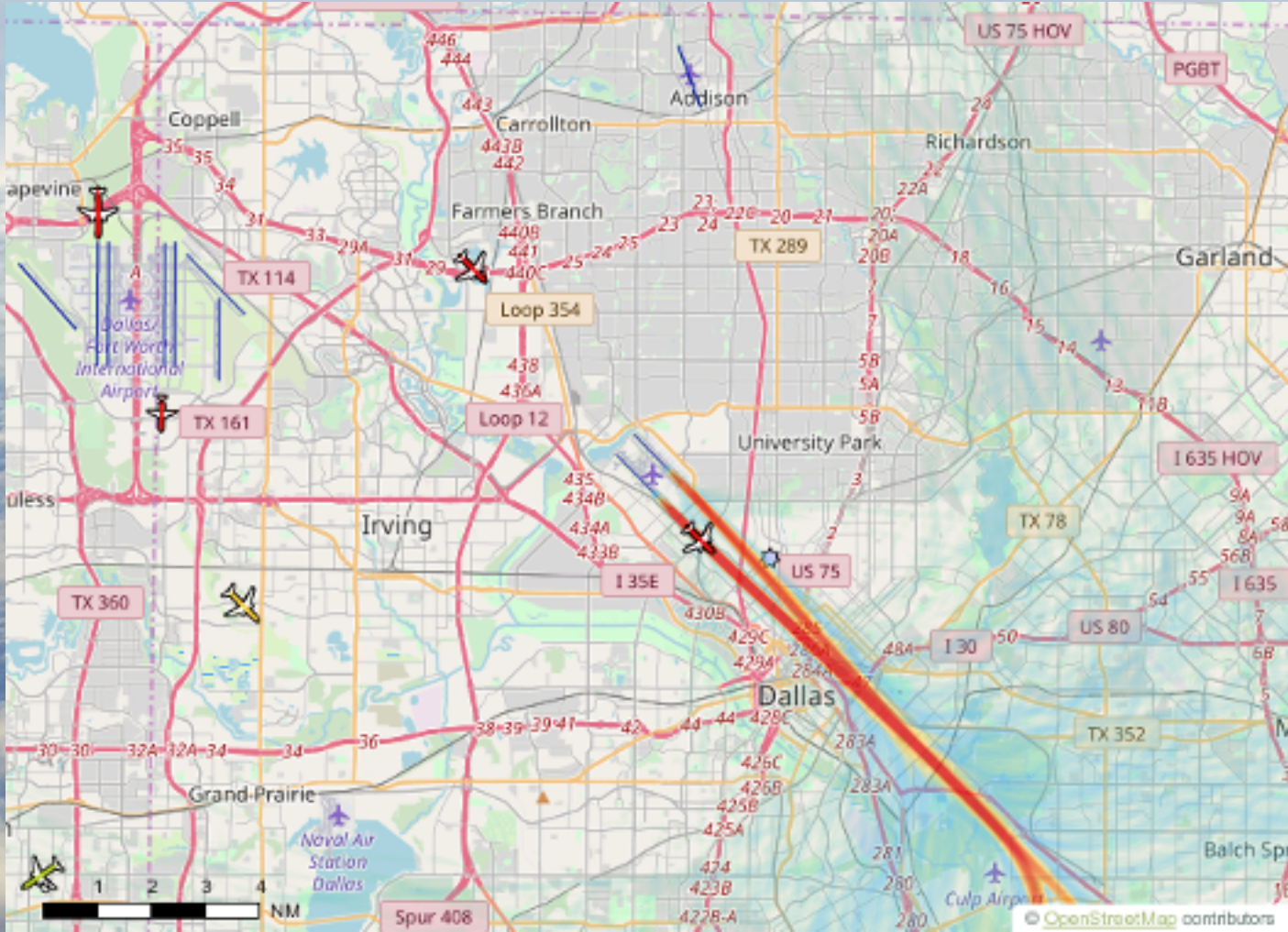
Arrivals and Departures

for the week of June 30th - July 6th



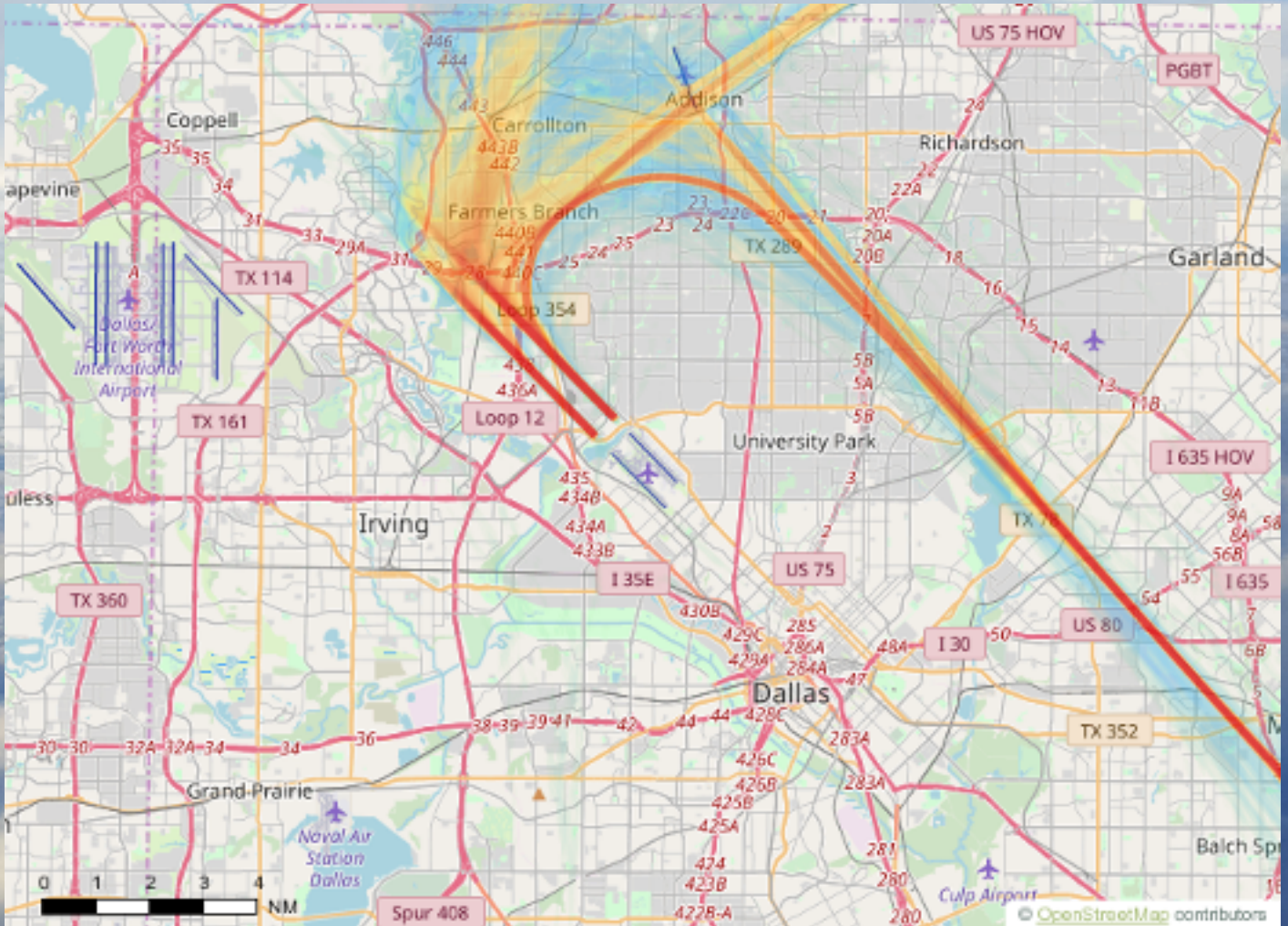
Departures

for the week of June 30th - July 6th



Arrivals

for the week of June 30th - July 6th



closures

RUNWAY & TAXIWAY CLOSURES:

NEXT 7 DAYS

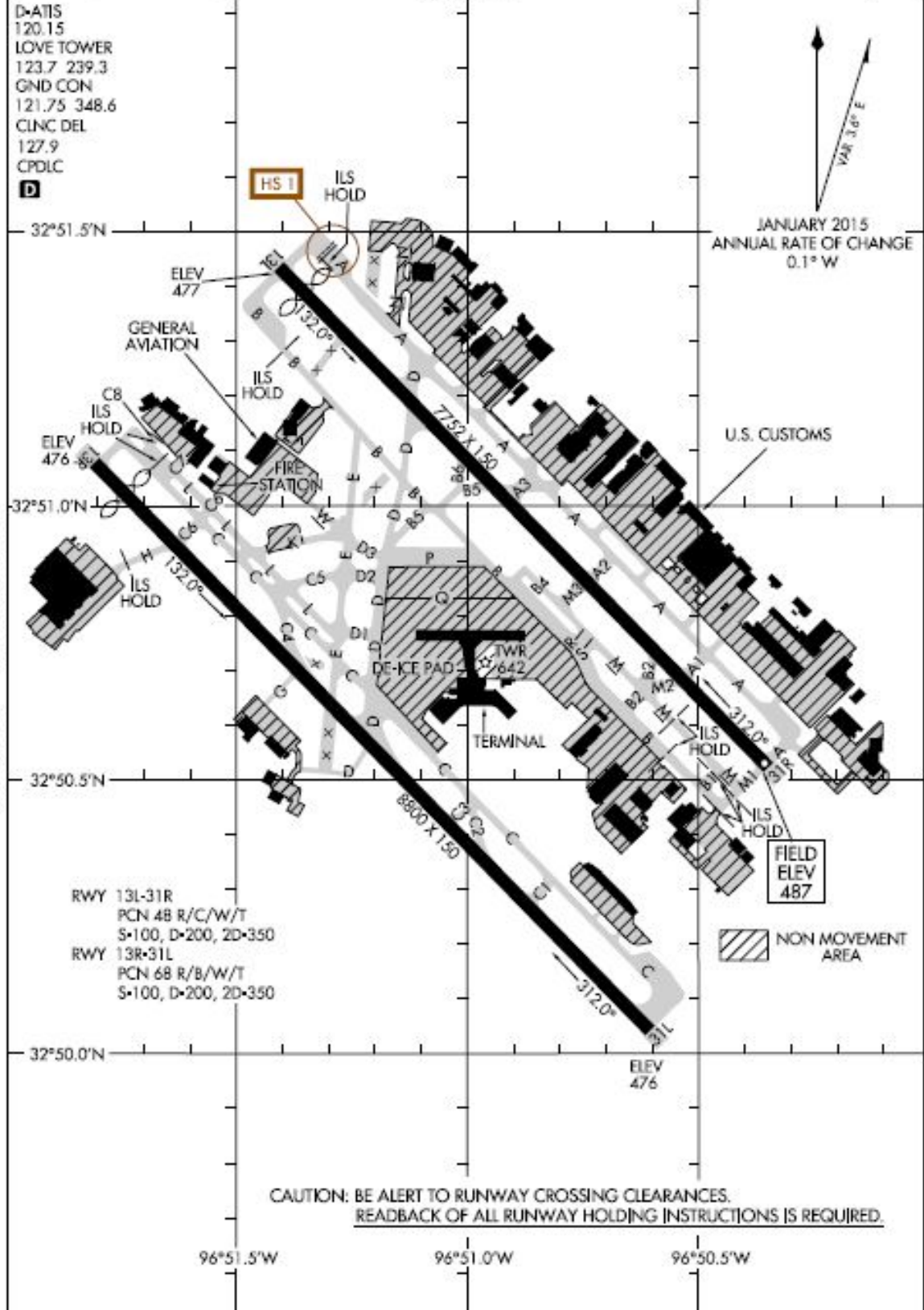
- Thursday/July 11th 2300 – Friday/July 12th 0600: Runway 13R/31L closed.
- Thursday/July 11th 2300 – Friday/July 12th 0600: Taxiway B between Taxiway B2 and 150ft west of Taxiway R closed. Taxiway R closed. Taxiway S closed. Taxiway M between Taxiway M3 and Taxiway B2 closed. Coordination with SWA OPS needed for impacts on Gates 1 – 9.
- Friday/July 12th 2300 – Saturday/July 13th 1900: Runway 13R/31L closed.
- Saturday/July 13th 2300 – Sunday/July 14th 1900: Runway 13R/31L closed.
- Mon/July 15th – September 12th: Runway 13L/31R closed.
- Mon/July 15th 2100 – Tues/July 16th 0600: Various rolling closures for paint removal (ABR) along Taxiway A, Taxiway B, and crossing points along Runway 13L/31R.
 - Area A: 2100 – 2200. TWY B between TWY B5 and TWY D closed. TWY D between RWY 13L/31R and TWY B5 closed.
 - Area B: 2200 – 2300. TWY A closed between Signature T2 south entrance and APCH END RWY 31R. Closed ramp entrance to Associated III and Museum.
 - Area C: 2300 – Midnight. TWY A closed between TWY A1 and APCH END RWY 31R. TWY A1 closed. Signature T2 entrances closed.
 - Area D: Midnight – 0130. TWY A2/M3 crossing not available.
 - Area E: 0130 - 0300 TWY A3/B5 crossing not available.
 - Area F: 0300-0400 TWY A between Gulfstream North north entrance and TXL N. Business Jet Center Alpha entrance closed.
 - Area G: 0400 – 0500 TWY A between Business Jet Center entrance and TXL N. TXL N closed. Business Jet Center N entrance closed.
 - Area H: 0500 – 0600 TWY B closed between Gulfstream South south entrance and TWY M1. Bombardier ramp closed.
- TBD: Various closures for paint removal (ABR) 2300 – 0500.
 - Area A: TWY A1
 - Area B: TWY M between TWY R and TWY S. TWY S between TWY B and TWY M.
 - Area C: TWY B between Gulfstream South north entrance and RON B Southern 315ft.
 - Area D: TWY M between TWY M1 and TWY B1. TWY B1 between TWY B and TWY M.

18256

AIRPORT DIAGRAM

AI-106 (FAA)

DALLAS LOVE FIELD (DAL)
DALLAS, TEXAS



S-C-2, 13 SEP 2018 to 11 OCT 2018

S-C-2, 13 SEP 2018 to 11 OCT 2018

AIRPORT DIAGRAM

18256

DALLAS, TEXAS
DALLAS LOVE FIELD (DAL)

In an effort to serve you better, Dallas Love Field has opened the Airport Communications Center (ACC) for your use. The ACC is staffed 24 hours per day to direct your airport related concerns. If you are submitting an aircraft noise complaint, please call the ACC at 214-670-LOVE (5683).

Translated copies of this newsletter are available upon request by emailing the Department of Aviation Environmental Division at AVIEnvironmental@dallascityhall.com

Las copias traducidas de este boletín están disponibles a solicitud enviando un correo electrónico a la División de Medio Ambiente de la Aviación al AVIEnvironmental@dallascityhall.com



on the radar

8008 Herb Kelleher Way

214-670-5683

www.dallas-lovefield.com

AVINoise@dallascityhall.com