

on the radar

september twentieth two thousand nineteen

LFEAC

10/17/2019

The next LFEAC meeting will be at 6 p.m. Thursday, October 17, 2019 at the Administration Building located at 7555 Lemmon Ave. Please join us and be prepared to discuss any environmental concerns you may have, including noise.








Be sure to check out our new Noise Lab web page!

<https://dal.noiselab.casper.aero/>

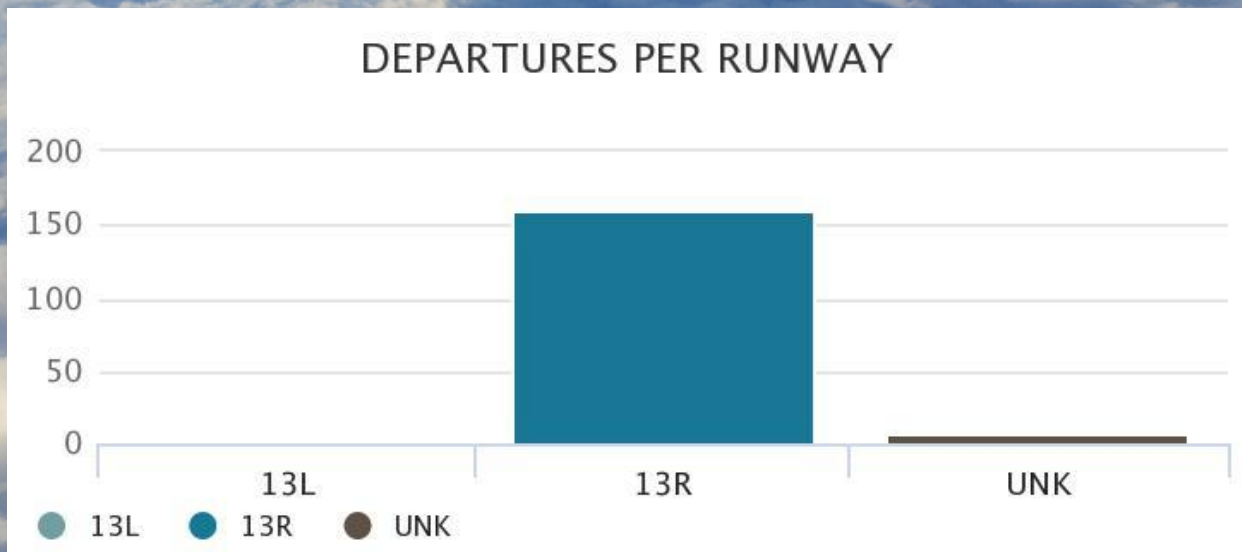
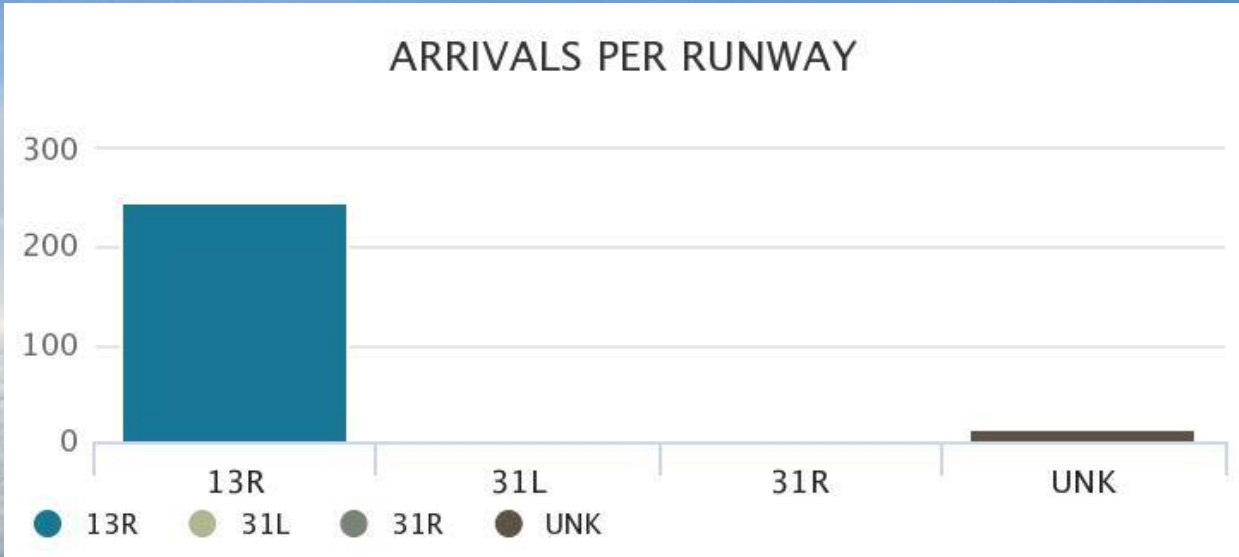


"Dallas Love Field Airport
has a history as bright as its
future."

Weather Forecast

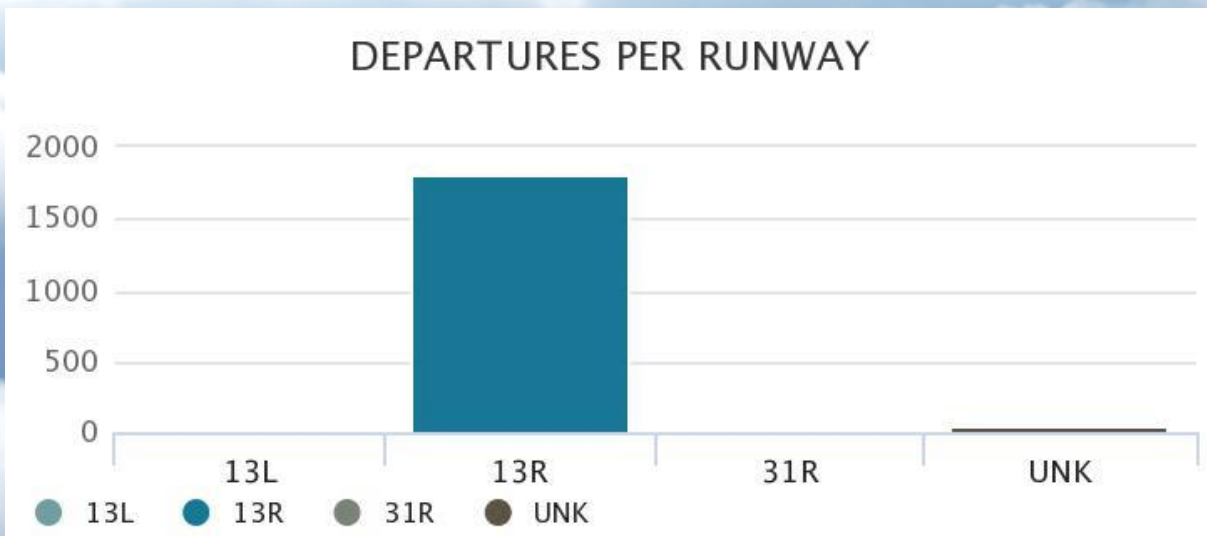
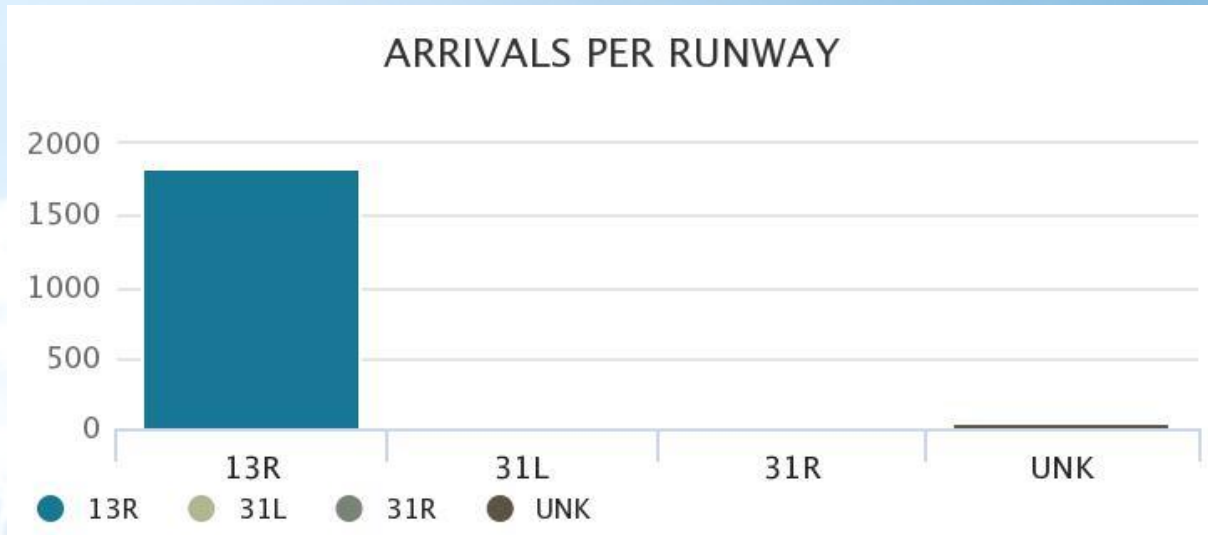
DAY		DESCRIPTION	HIGH / LOW	PRECIP	WIND	HUMIDITY
TODAY SEP 20		AM Clouds/PM Sun	91°/75°	▮ 20%	SSE 15 mph	60%
SAT SEP 21		Partly Cloudy	93°/74°	▮ 10%	SSE 13 mph	64%
SUN SEP 22		Partly Cloudy	93°/76°	▮ 10%	S 12 mph	62%
MON SEP 23		Partly Cloudy	91°/75°	▮ 20%	S 7 mph	67%
TUE SEP 24		PM Showers	92°/74°	▮ 30%	SSE 10 mph	63%
WED SEP 25		Sunny	91°/73°	▮ 10%	S 11 mph	60%
THU SEP 26		Mostly Sunny	91°/73°	▮ 20%	SSE 12 mph	61%

Arrivals and Departures per Runway During Preferential Hours for the week of Sep 1st - Sep 7th



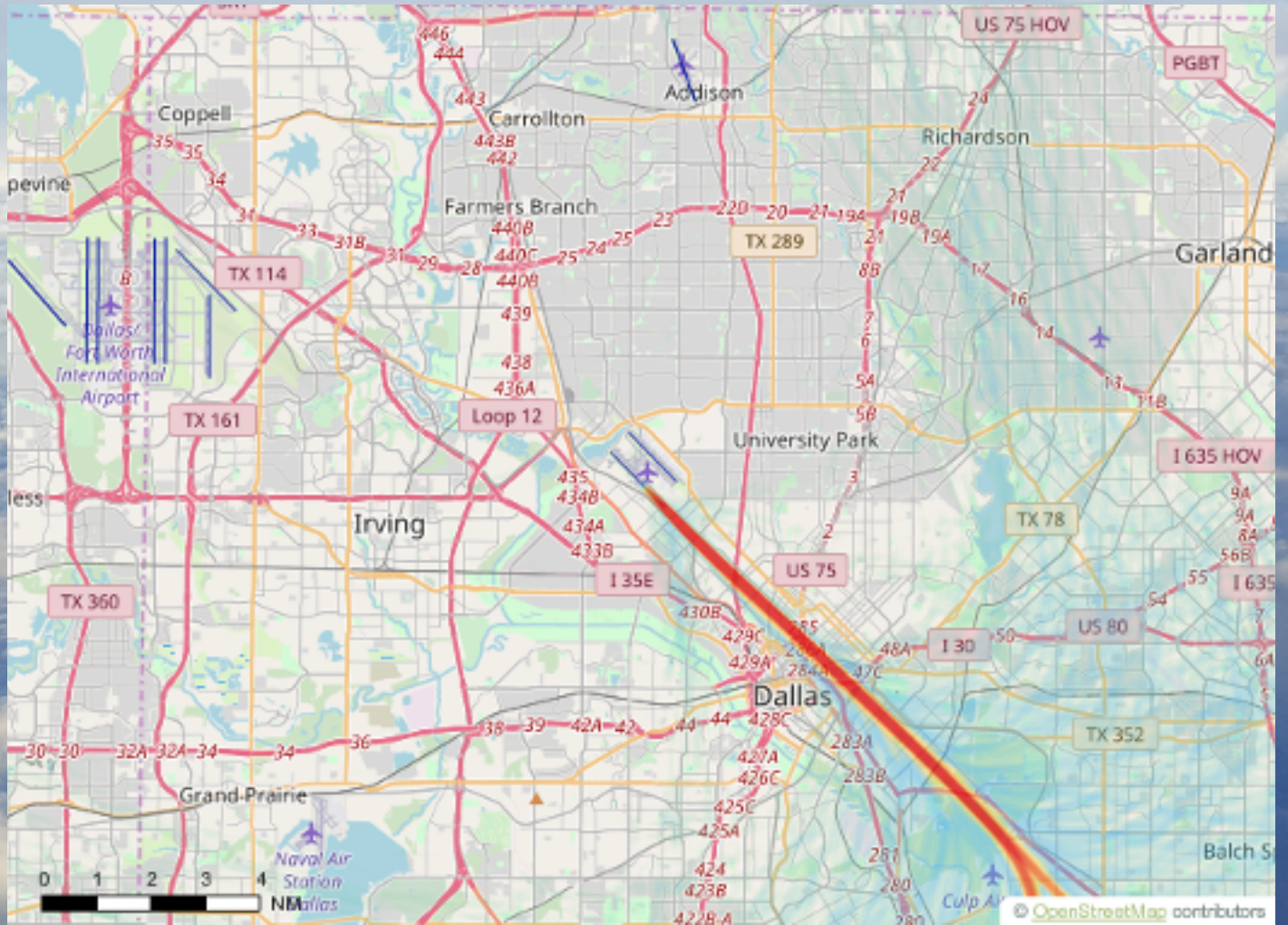
Arrivals and Departures

for the week of Sep 1st - Sep 7th



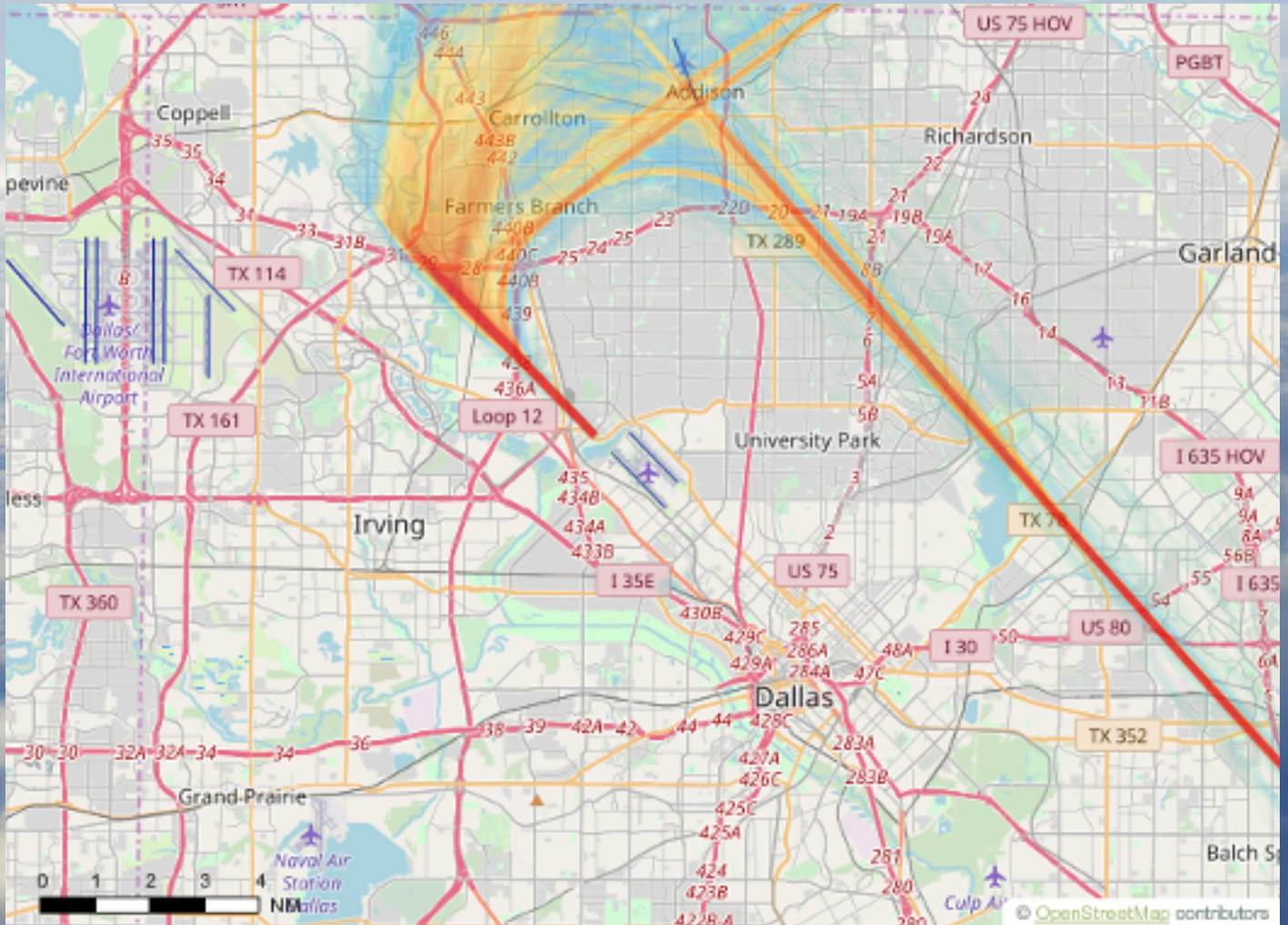
Departures

for the week of Sep 1st - Sep 7th



Arrivals

for the week of Sep 1st - Sep 7th



closures

DUE TO UNFORESEEN CONDITIONS RUNWAY 13L/31R IS TO REMAIN CLOSED UNTIL THURSDAY, SEPTEMBER 21ST AT 0700L.

RUNWAY & TAXIWAY CLOSURES:

NEXT 7 DAYS

- Thurs/Sept 19th 2000 – Fri/Sept 20th 0400: Hi-Lite to paint Areas H (M5/E/B intersection 2000-2300) and E (Signature 2 north and south ramp entrances closed 2300-0400)
- Mon/Sept 23rd – several weeks midnight to 0600: Nightly except Sundays 13L/31R closures for ABR to water new grass in the RSA.
- Mon/Sept 23rd – Sun/Oct 6th 13R/31L closed daily from 0600-2000
- Mon/Sept 23rd 0900-1800: Taxiway D closed between 13R/31L and BJA Ramp.
- Tues/Sept 24th 0900-1800: Taxiway D closed between 13R/31L and BJA Ramp.
- Wed/Sept 25th 0900-1800: Access from BJA Tenant ramp to Taxiway D closed and portion of VSR closed.
- Wed/Sept 25th – Sat/Sept 28th 0600-2000: Hi-Lite daily surface prep and painting on Runway 13R/31L.
- Thurs/Sept 26th 0900-1800: Boring operations in grass south of 13R/31L near Gate 210. Boring Areas B3,B4,B5.
- Fri/Sept 27th 0900-1800: Boring operations in grass south of 13R/31L near Taxiway H. Boring Areas B1,B2.

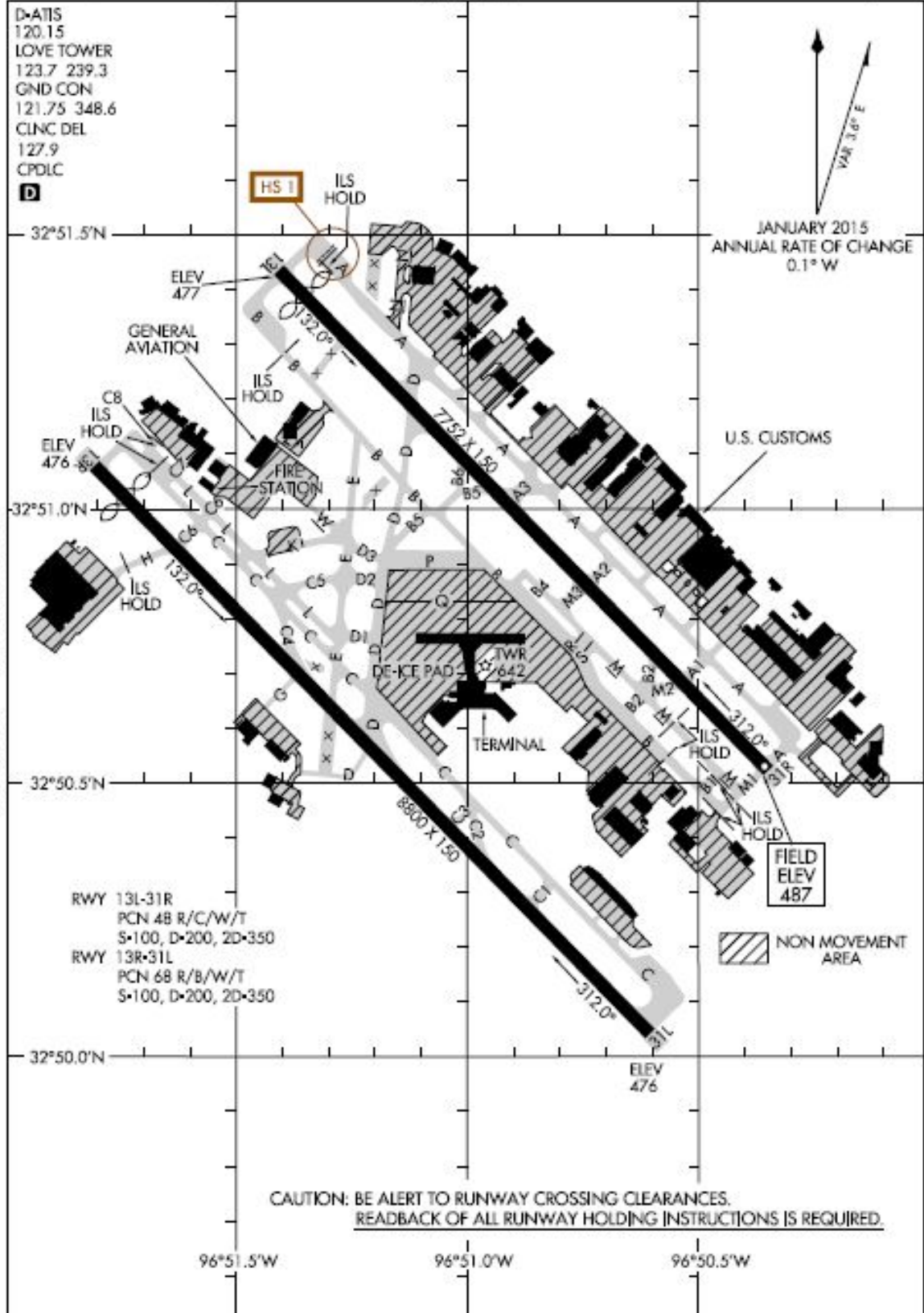
ONGOING CLOSURES

- RWY 13L/31R CLSD – scheduled to reopen 9/19/19.
- AFM:13R/31L RSA work nightly after last air carrier. NOTAMs for aircraft restrictions and WIP.
- TWY A BTN APCH END RWY 13L AND TXL N CLSD
- TWY M1 SOUTH 415FT CLSD
- TWY A SOUTHEAST 30FT CLSD
- TWY A1 CLSD
- TWY B1 CLSD
- TWY M BTN TWY S AND TWY M1 CLSD
- TWY B BTN APCH END RWY 13L AND TWY M5 CLSD
- TWY C5 BTN TWY E AND TWY L CLSD
- TWY M2 CLSD
- TWY B2 CLSD

18256
AIRPORT DIAGRAM

AI-106 (FAA)

DALLAS LOVE FIELD (DAL)
 DALLAS, TEXAS



S-C-2, 13 SEP 2018 to 11 OCT 2018

S-C-2, 13 SEP 2018 to 11 OCT 2018

AIRPORT DIAGRAM
 18256

DALLAS, TEXAS
DALLAS LOVE FIELD (DAL)

In an effort to serve you better, Dallas Love Field has opened the Airport Communications Center (ACC) for your use. The ACC is staffed 24 hours per day to direct your airport related concerns. If you are submitting an aircraft noise complaint, please call the ACC at 214-670-LOVE (5683).

Translated copies of this newsletter are available upon request by emailing the Department of Aviation Environmental Division at AVIEnvironmental@dallascityhall.com

Las copias traducidas de este boletín están disponibles a solicitud enviando un correo electrónico a la División de Medio Ambiente de la Aviación al AVIEnvironmental@dallascityhall.com



on the radar

8008 Herb Kelleher Way

214-670-5683

www.dallas-lovefield.com

AVINoise@dallascityhall.com