

on the radar

october fourth two thousand nineteen

LFEAC

10/24/2019

The next LFEAC meeting will be at 6 p.m. Thursday, October 24, 2019 at the Administration Building located at 7555 Lemmon Ave. Please join us and be prepared to discuss any environmental concerns you may have, including noise.

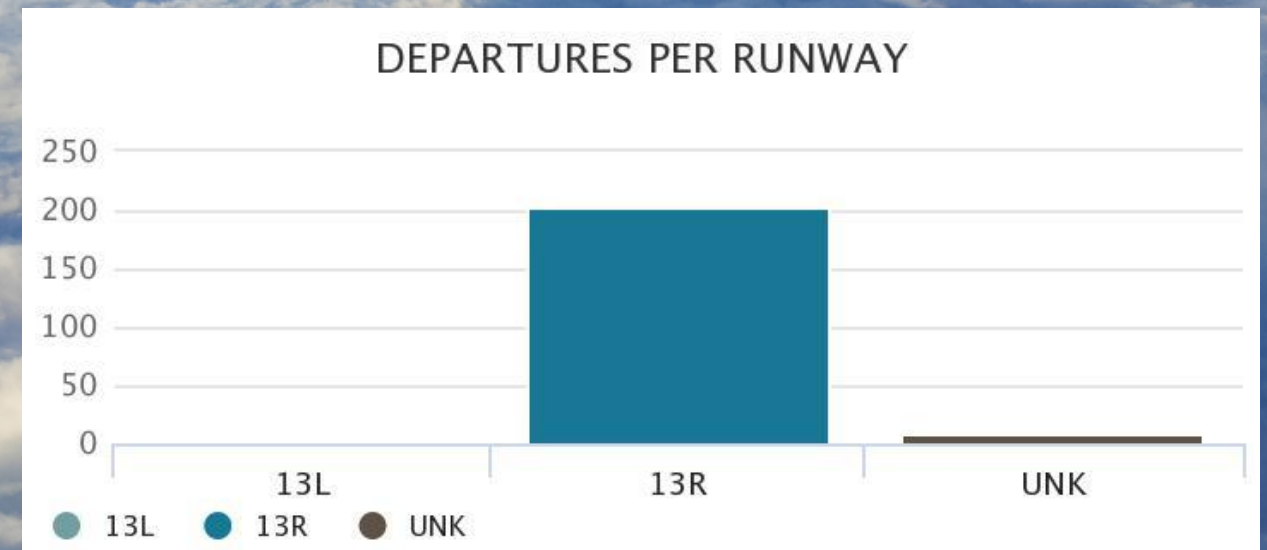
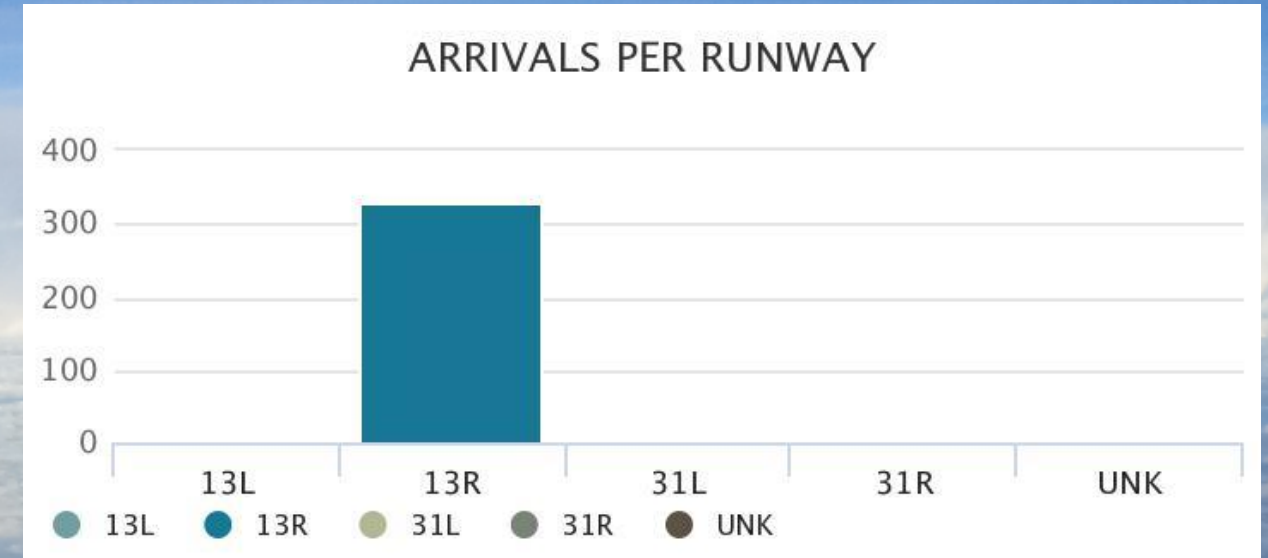
Be sure to check out our new Noise Lab web page!

<https://dal.noiselab.casper.aero/>



"Dallas Love Field Airport has a history as bright as its future."

Arrivals and Departures per Runway During Preferential Hours for the week of Sep 15th - Sep 21st

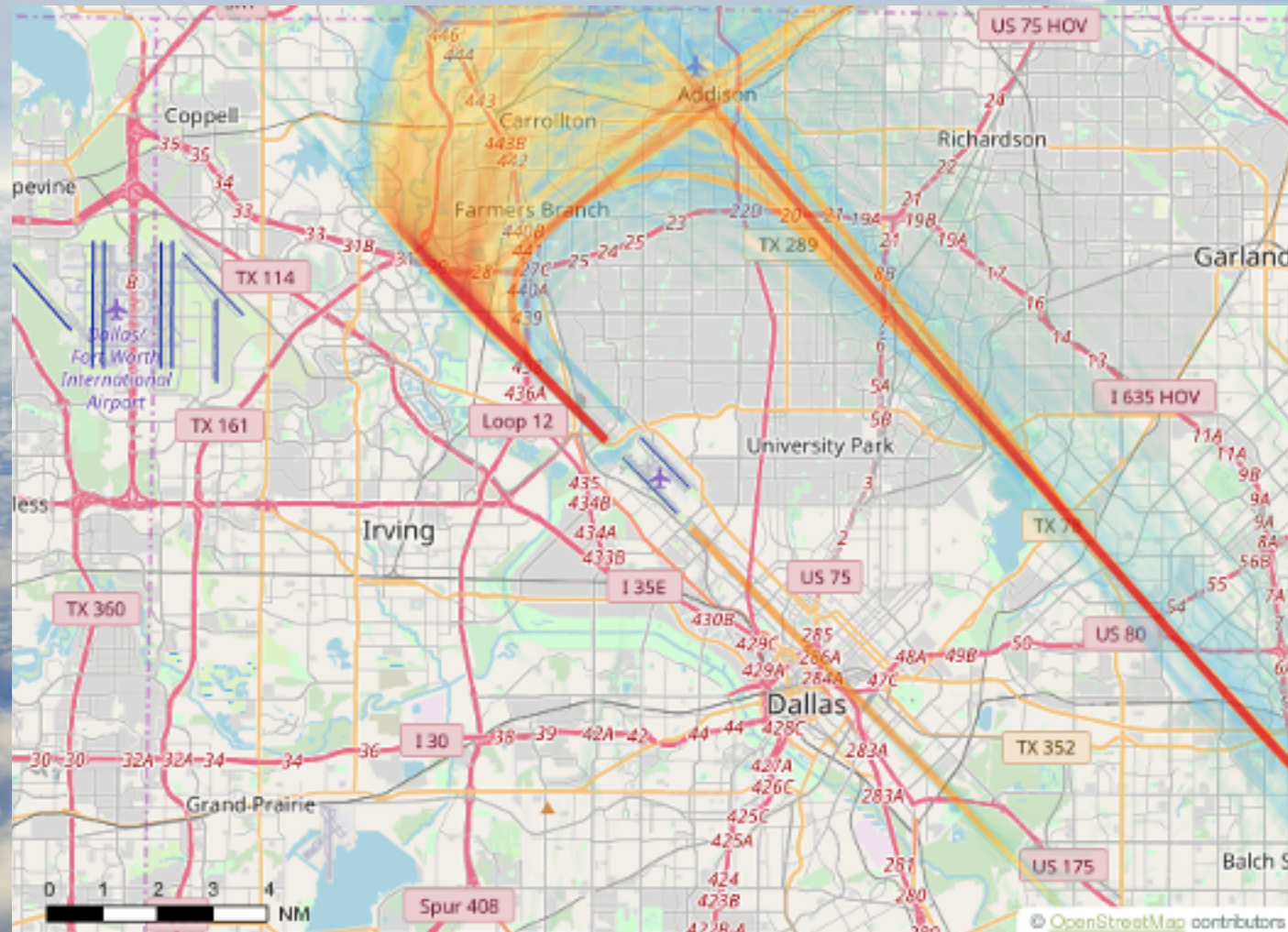


Weather Forecast

DAY	DESCRIPTION	HIGH / LOW	PRECIP	WIND	HUMIDITY
TODAY OCT 4	Partly Cloudy	91°/72°	20%	ENE 8 mph	61%
SAT OCT 5	Mostly Sunny	93°/73°	10%	SSE 5 mph	58%
SUN OCT 6	Mostly Sunny	94°/61°	20%	SSE 7 mph	52%
MON OCT 7	Partly Cloudy	77°/58°	20%	NNE 14 mph	58%
TUE OCT 8	Mostly Sunny	80°/61°	0%	E 7 mph	45%
WED OCT 9	Sunny	87°/69°	0%	SSE 12 mph	48%
THU OCT 10	Isolated Thunderstorms	87°/60°	30%	SSE 12 mph	63%

Arrivals

for the week of Sep 15th - Sep 21st



RUNWAY & TAXIWAY CLOSURES:

NEXT 7 DAYS

- Fri/Oct 4th 0001- Fri/Oct 4th 0600: Taxiways A5, M5, M6, M between M6 and M5, B between M5 and P, B5 between B and P, D between B and P, E between Tiger ramp entrance and B – all closed for painting operations. See attached.
- Fri/Oct 4th 0001-0600: 13L/31R Closed
- Fri/Oct 4th around 1700: Taxiway M will close between M6 and M5 for EAS to remove electrical jumper.
- Fri/Oct 4th 0600-2000: 13R/31L closed .
- Sat/Oct 5th 0001-0600: 13L/31R Closed.
- Sat/Oct 5th 0600-2000: 13R/31L closed.
- Sun/Oct 6th 0001-0600: 13L/31R Closed.
- Sun/Oct 6th 0600 – Tues/Oct 8th 2000: 13R/31L closed
- Wed/Oct 9th 0001-0600: 13L/31R Closed
- Tues/Oct 8th until finished: Nightly closures of Taxiway M1 south 415' from 2359-0600 for ABR hauling operations. As weather/conditions permit.
- Wed/Oct 9th until finished: Alternating nightly closures of 13R/31L or 13L/31R from 2300-0600: for contractors.

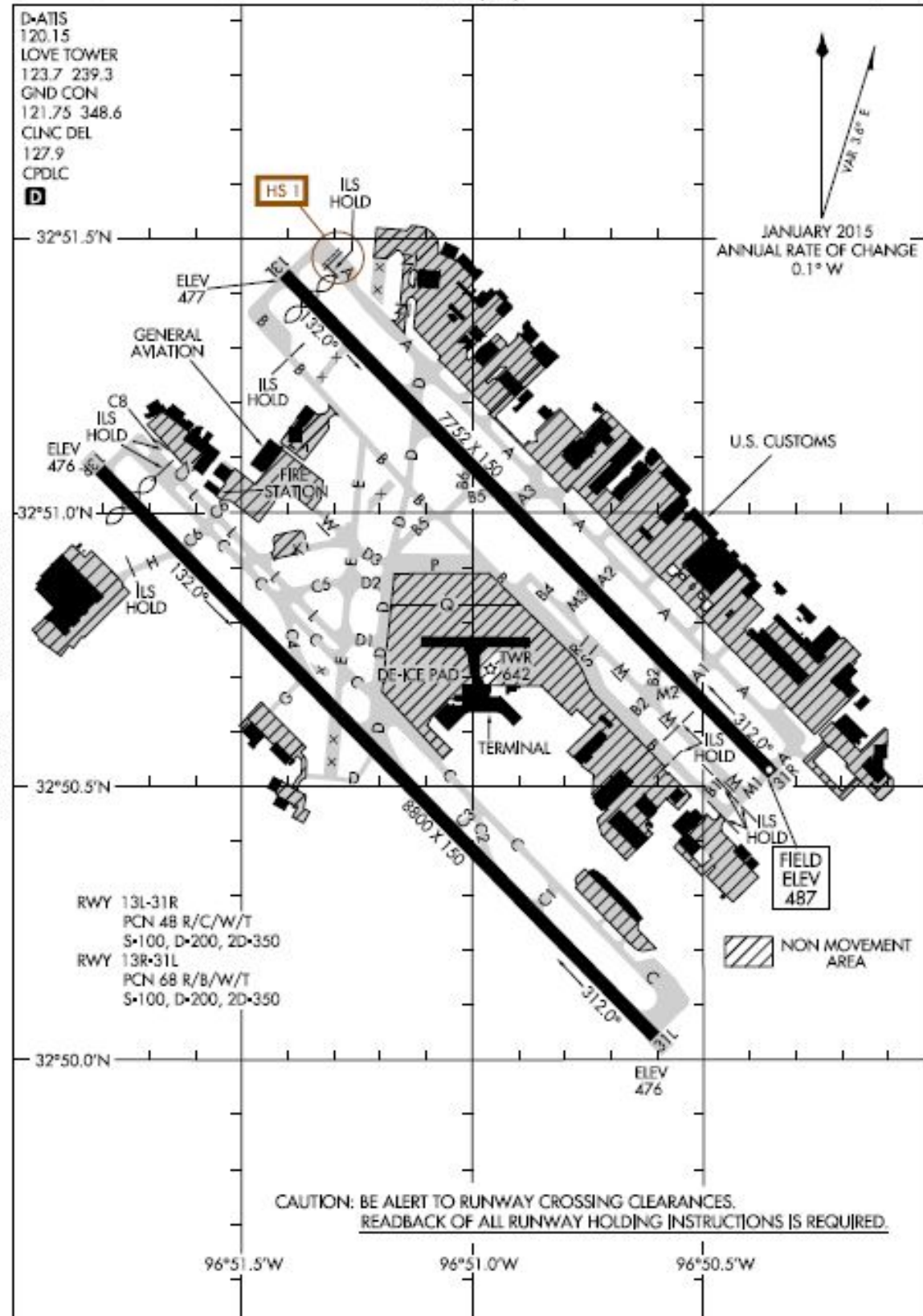
ONGOING CLOSURES

- DAL TWY B BTN TWY M6 AND TWY M5 CLSD
- DAL TWY M BTN TWY S AND TWY B1 CLSD
- DAL TWY B5 BTN RWY 13L/31R AND TWY B CLSD
- DAL TWY M2 CLSD
- DAL TWY B2 CLSD

18256
AIRPORT DIAGRAM

AI-106 (FAA)

DALLAS LOVE FIELD (DAL)
DALLAS, TEXAS



SC-2, 13 SEP 2018 to 11 OCT 2018

SC-2, 13 SEP 2018 to 11 OCT 2018

AIRPORT DIAGRAM
18256

DALLAS, TEXAS
DALLAS LOVE FIELD (DAL)

In an effort to serve you better, Dallas Love Field has opened the Airport Communications Center (ACC) for your use. The ACC is staffed 24 hours per day to direct your airport related concerns. If you are submitting an aircraft noise complaint, please call the ACC at 214-670-LOVE (5683).

Translated copies of this newsletter are available upon request by emailing the Department of Aviation Environmental Division at AVIEnvironmental@dallascityhall.com

Las copias traducidas de este boletín están disponibles a solicitud enviando un correo electrónico a la División de Medio Ambiente de la Aviación al AVIEnvironmental@dallascityhall.com



on the radar

8008 Herb Kelleher Way 214-670-5683 www.dallas-lovefield.com AVINoise@dallascityhall.com