

Announcements:

There are no scheduled runway closures December 20th, @ 6 pm through January 6th, @ 2 am per FAA.

**Dallas
Love Field
Community
Weekly
Update**

*January Third
Two Thousand Twenty*

LFEAC

The next LFEAC meeting will be Thursday, January 16, 2020, @ 6 pm

The Love Field Environmental Advisory Committee will be held at the Administration Building located at 7555 Lemmon Ave. Please join us to discuss any environmental issues in the community including noise.

You may submit your noise concern through our Noise Lab website.








<https://dal.noiselab.casper.aero/>



"Focus on the journey, not the destination."

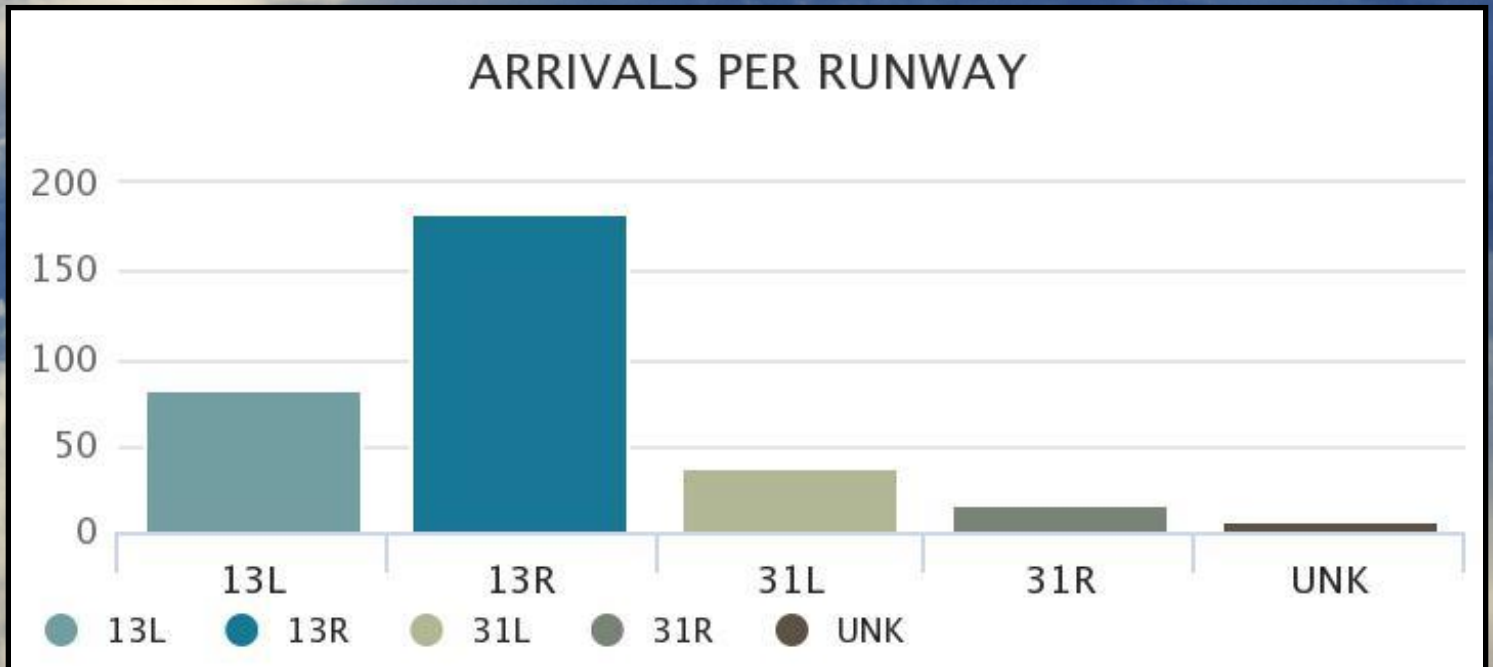
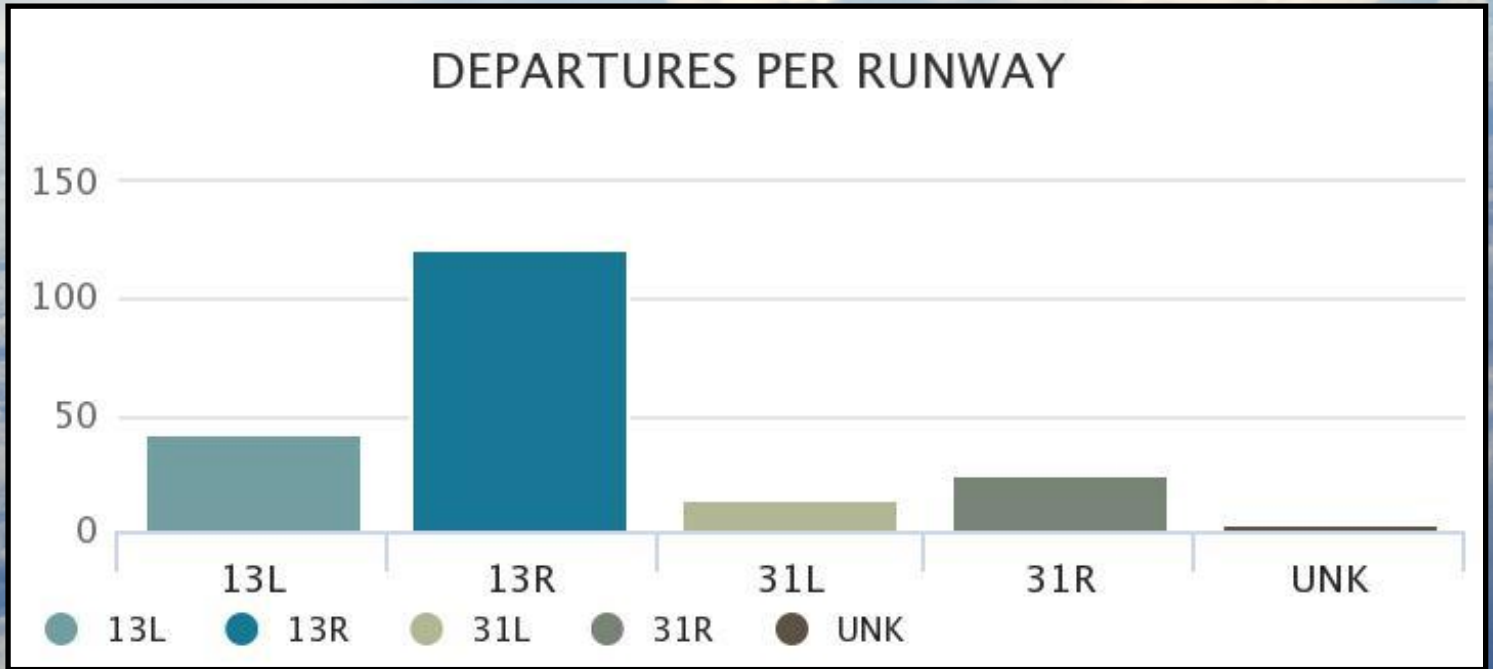
- Chris Hadfield

Weather Forecast

DAY		DESCRIPTION	HIGH / LOW	PRECIP	WIND	HUMIDITY
TONIGHT JAN 3		Mostly Clear	--/38°	10%	NW 13 mph	59%
SAT JAN 4		Sunny	59°/45°	0%	NNE 6 mph	49%
SUN JAN 5		Sunny	70°/40°	0%	WSW 9 mph	40%
MON JAN 6		Partly Cloudy	66°/41°	10%	S 9 mph	57%
TUE JAN 7		Sunny	57°/38°	0%	NNW 10 mph	39%
WED JAN 8		Mostly Sunny	60°/50°	0%	S 17 mph	38%
THU JAN 9		Showers	67°/54°	40%	S 15 mph	75%

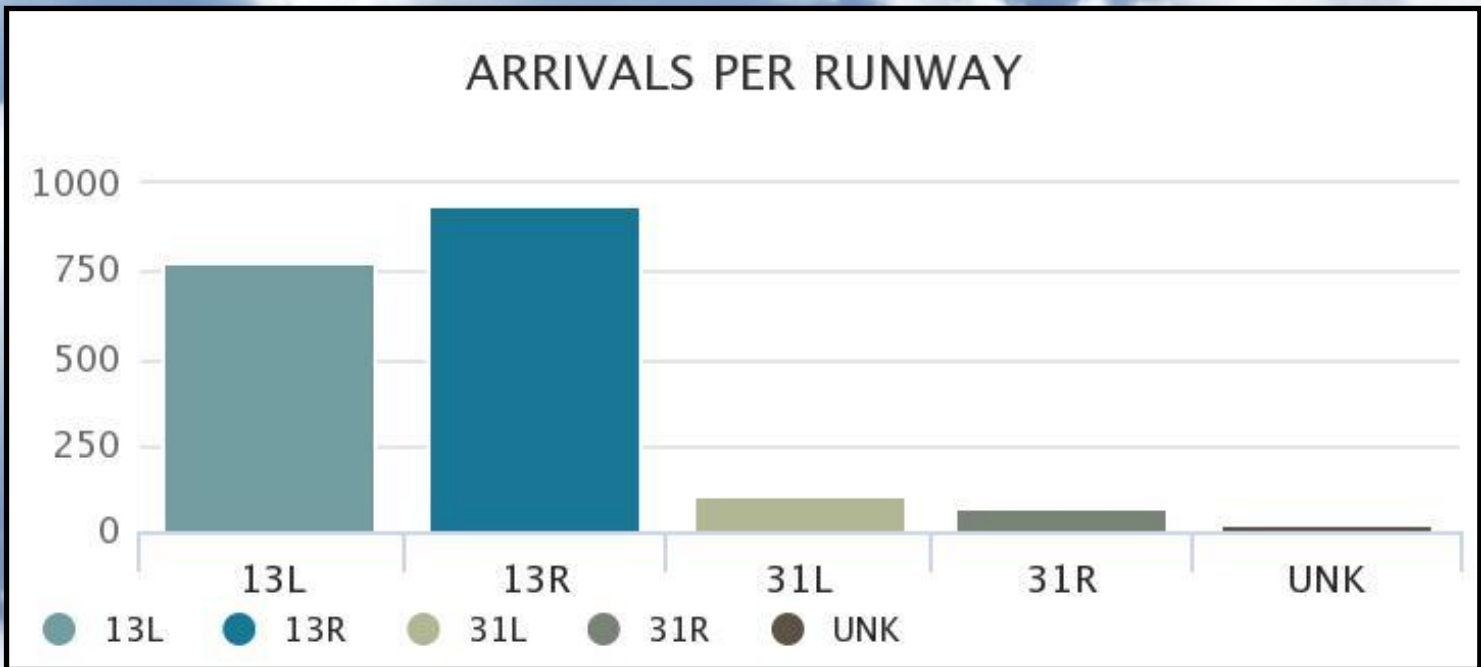
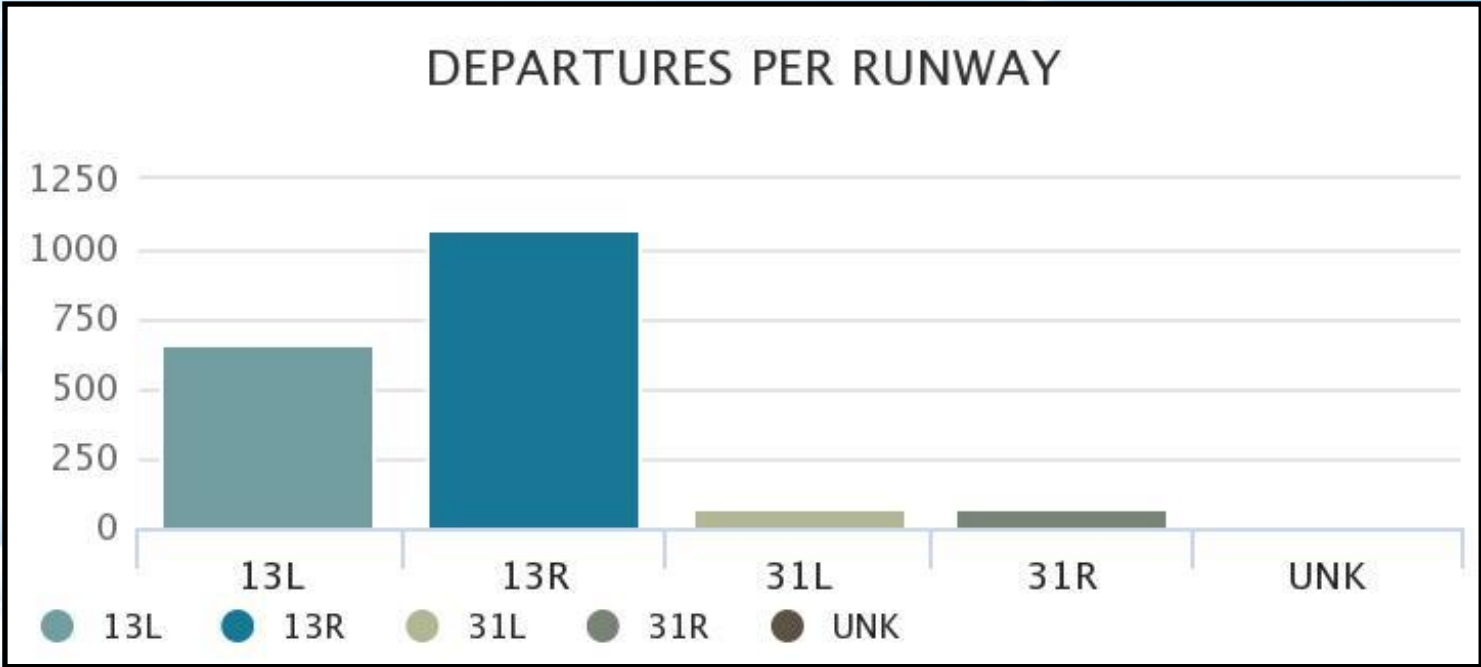
Arrivals and Departures Per Runway During Preferential Hours

For the Week of Dec 19th - Dec 25th



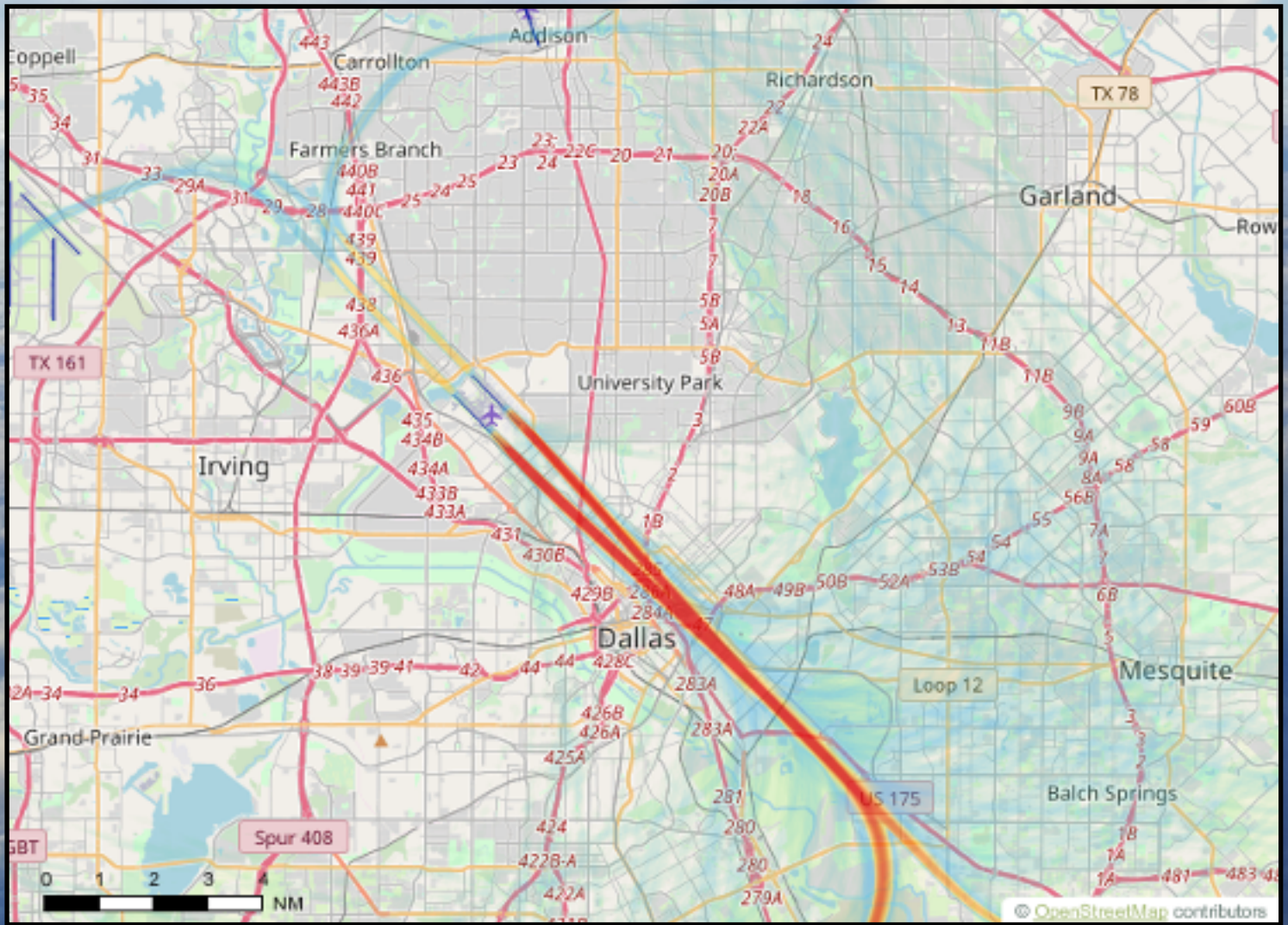
Arrivals and Departures

For the Week of Dec 19th - Dec 25th



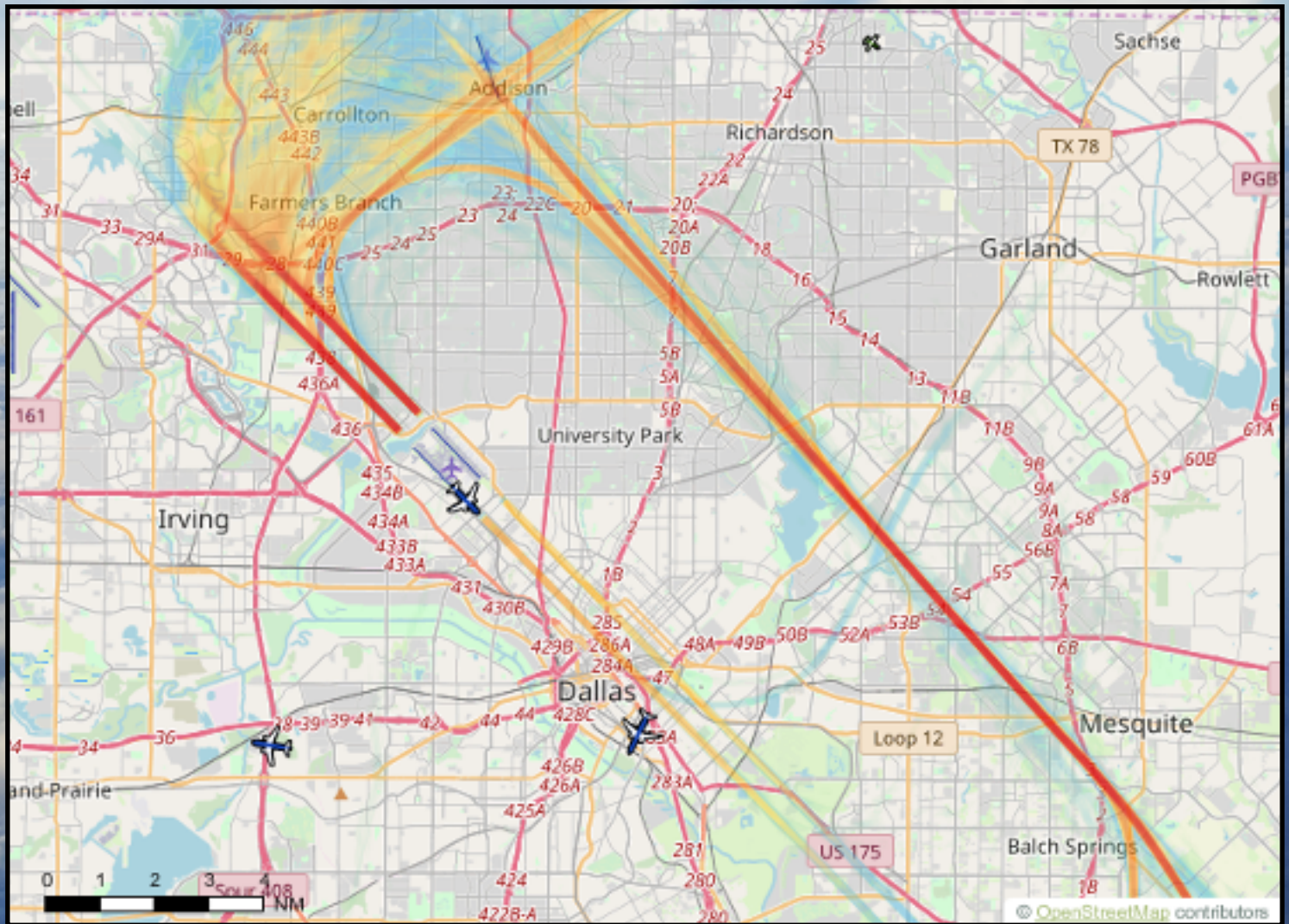
Departures

For the Week of Dec 19th - Dec 25th



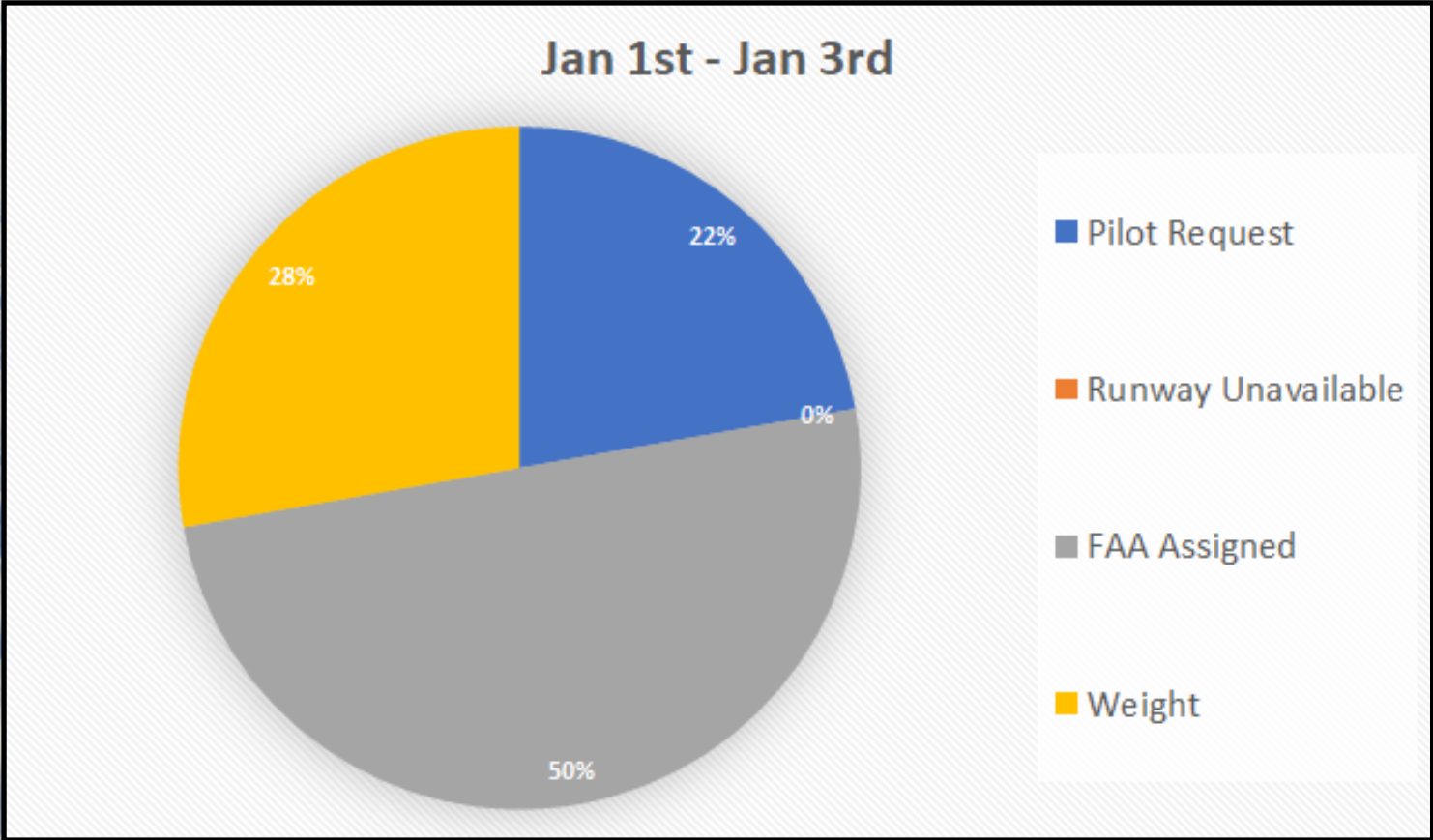
Arrivals

For the Week of Dec 19th - Dec 25th



Weekly Deviations

For the Week of Jan 1st - Jan 3rd



RUNWAY & TAXIWAY CLOSURES:

NEXT 7 DAYS

- Every Wednesday when needed until further notice: 1300-1700: Taxiway E closed between B and W for AFM snow training.
- ALL Watering between Moratorium dates 12/19/19 to 1/6/2020 will require an OPS escort on the runway with ATC coordination. After 1/6/2020, nightly runway closures will resume.
 - Nightly 2359 to 0400: AFM watering grass in 13R/31L RSA.
 - Monday, Wednesday, Fridays – 0400 to 0600: ABR watering sod 31R Approach end.
- Mon/Jan 6th 0800-0930 (subject to fluctuate): Taxiway C6 between Taxiway L and Textar Ramp closed for DFR. Textar traffic (ADG II and below) will need to use Taxiway W. Anything ADG III or larger will need to coordinate with OPS for C6 usage. Textar and ATC notified.
- Wed/Jan 8th 1130-1200: Taxiway P closed for ENV.

ONGOING CLOSURES

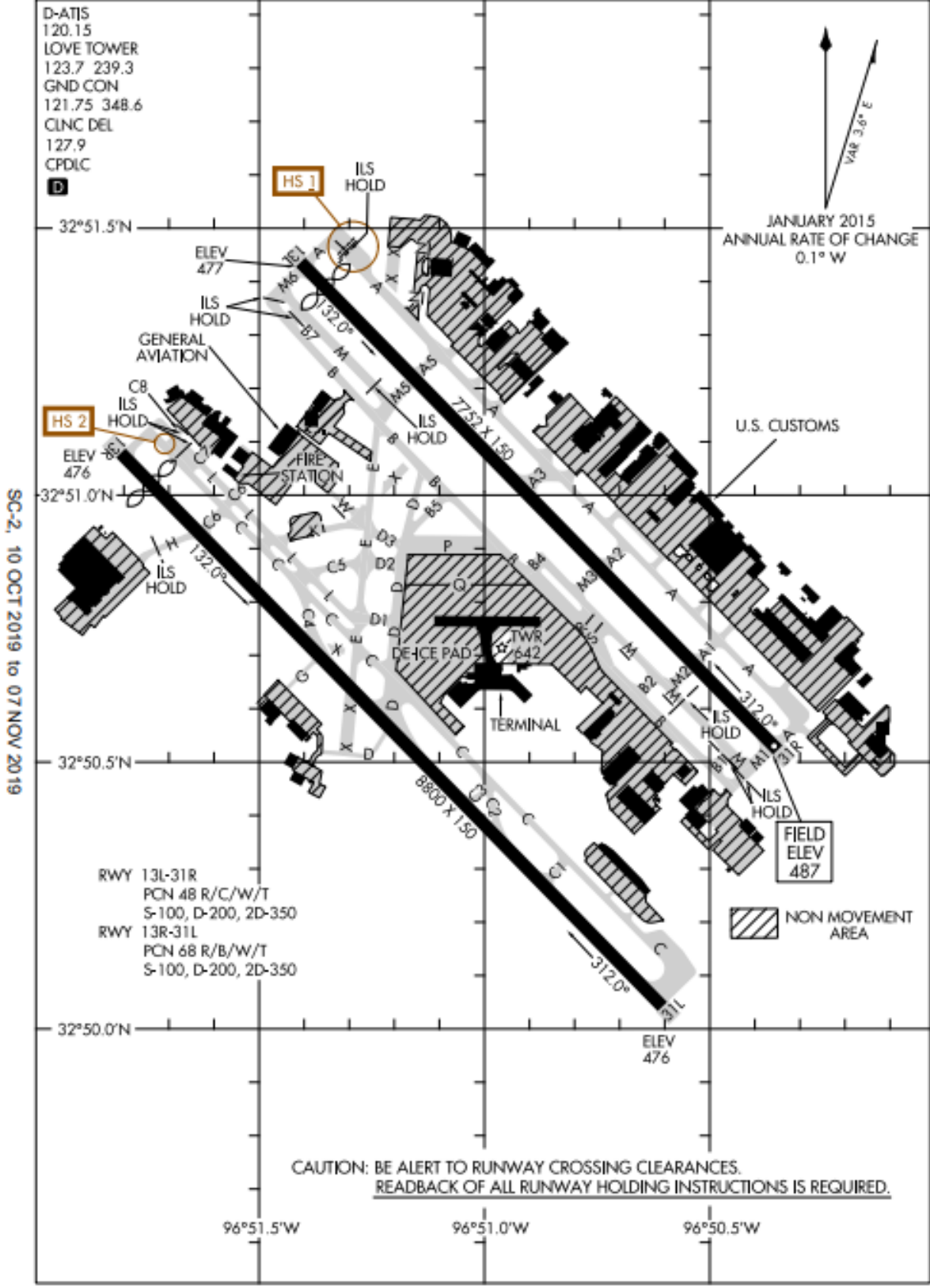
- DAL TWY M BTN TWY B3 AND TWY B1 CLSD
- DAL TWY M2 CLSD
- DAL TWY B2 CLSD
- DAL TWY C5 BTN TWY E AND TWY L CLSD

** Please see the airport diagram on the next page for locations of runways and taxiways.*

19283
AIRPORT DIAGRAM

AL-106 (FAA)

DALLAS LOVE FIELD (DAL)
DALLAS, TEXAS



SC-2, 10 OCT 2019 to 07 NOV 2019

SC-2, 10 OCT 2019 to 07 NOV 2019

CAUTION: BE ALERT TO RUNWAY CROSSING CLEARANCES. READBACK OF ALL RUNWAY HOLDING INSTRUCTIONS IS REQUIRED.

AIRPORT DIAGRAM
19283

DALLAS, TEXAS
DALLAS LOVE FIELD (DAL)

In an effort to serve you better, Dallas Love Field has opened the Airport Operation Center (AOC) for your use. The AOC is staffed 24 hours per day to direct your airport related concerns.

If you are submitting an aircraft noise complaint, please call the AOC at 214-670-LOVE (5683).

Translated copies of this newsletter are available upon request by emailing the Department of Aviation Environmental Division at AVIEnvironmental@dallascityhall.com

Las copias traducidas de este boletín están disponibles a solicitud enviando un correo electrónico a la División de Medio Ambiente de la Aviación al AVIEnvironmental@dallascityhall.com

For questions or concerns please contact:



Isaac Ellison
Aviation Noise Specialist
City of Dallas | DallasCityHall.com
Department of Aviation

7555 Lemmon Ave

Dallas, TX 75209

O: (214) 670-6843

AVINoise@dallascityhall.com



Dallas Love Field