

**Announcements:**

Nightly runway closures will resume: 13R/31L on Tuesdays and 13L/31R on Thursdays.

**Dallas  
Love Field  
Community  
Weekly  
Update**

*January Seventeenth  
Two Thousand Twenty*

**LFEAC**

The next LFEAC meeting will be Thursday,  
April 16, 2020, @ 6 pm

The Love Field Environmental Advisory Committee will be held at the Administration Building located at 7555 Lemmon Ave. Please join us to discuss any environmental issues in the community including noise.



You may submit your noise concern through our Noise Lab website.

<https://dal.noiselab.casper.aero/>



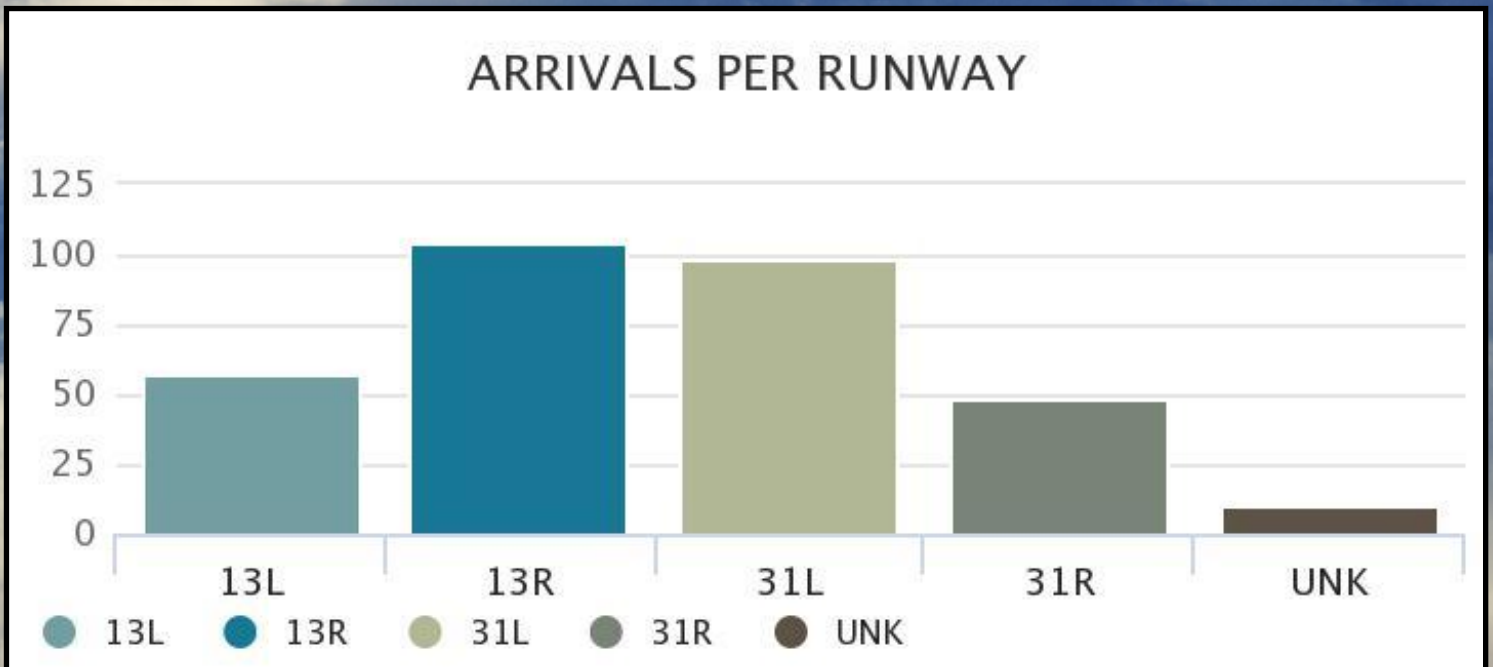
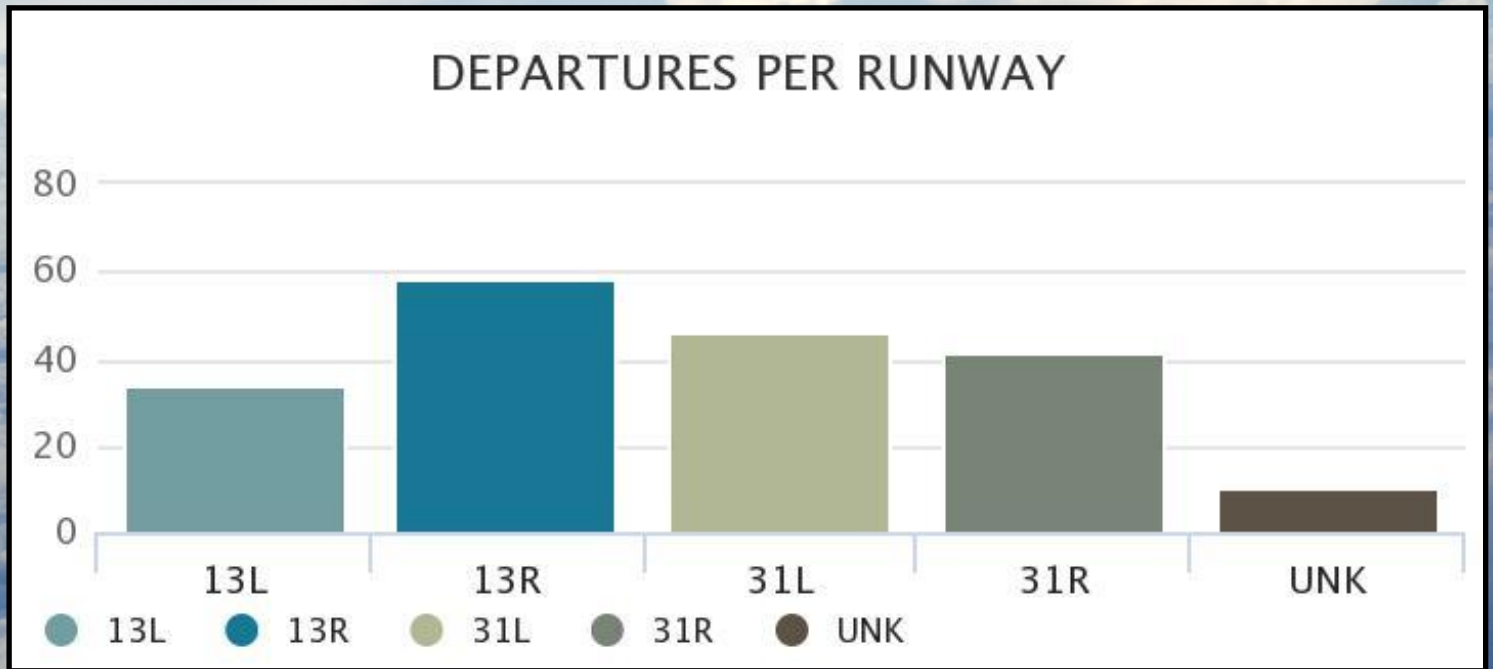
**"It Always Seems Impossible,  
Until It Is Done."**  
- *Unknown*

**Weather Forecast**

DAY		DESCRIPTION	HIGH / LOW	PRECIP	WIND	HUMIDITY
TONIGHT JAN 17		Rain/Thunder	--/51°	90%	SSW 11 mph	88%
SAT JAN 18		Partly Cloudy	55°/35°	10%	N 17 mph	56%
SUN JAN 19		Sunny	54°/34°	0%	NNE 6 mph	47%
MON JAN 20		Sunny	57°/35°	10%	N 3 mph	50%
TUE JAN 21		Cloudy	54°/39°	20%	ESE 8 mph	56%
WED JAN 22		Showers	48°/44°	50%	SE 12 mph	81%
THU JAN 23		Showers	59°/43°	50%	ESE 10 mph	84%

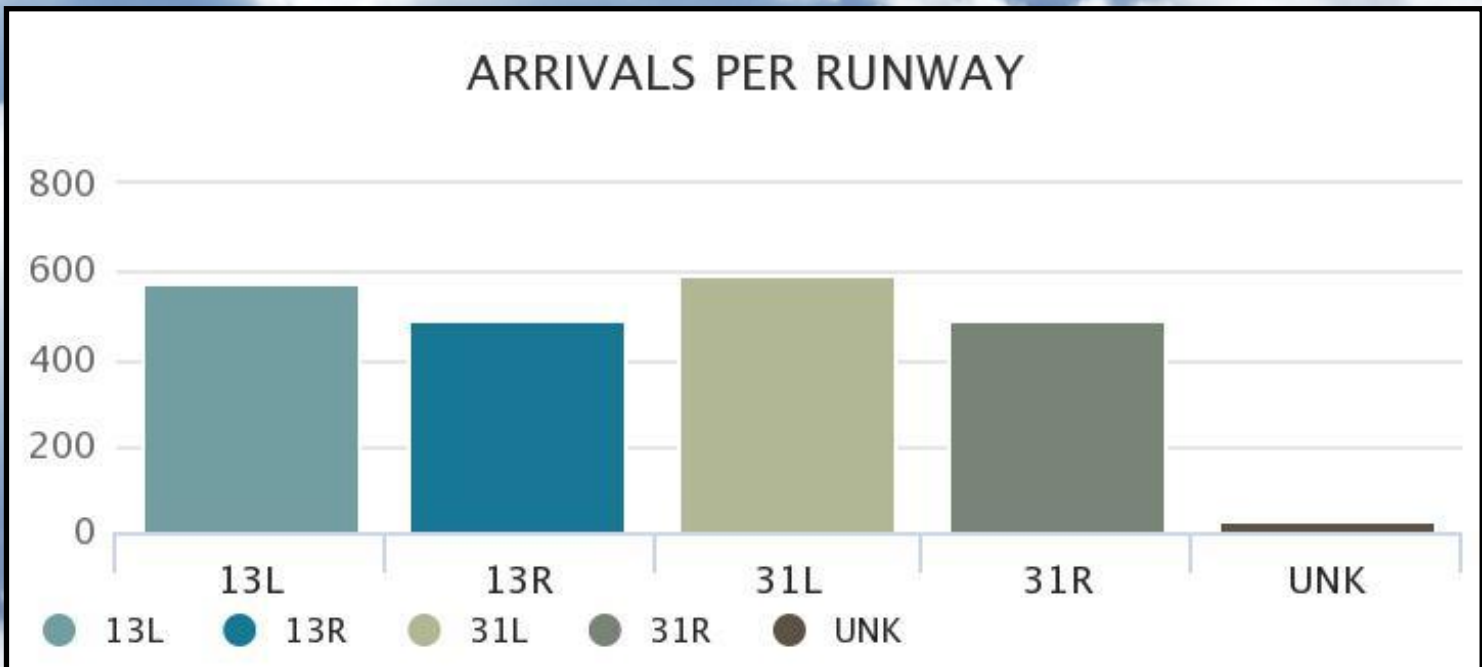
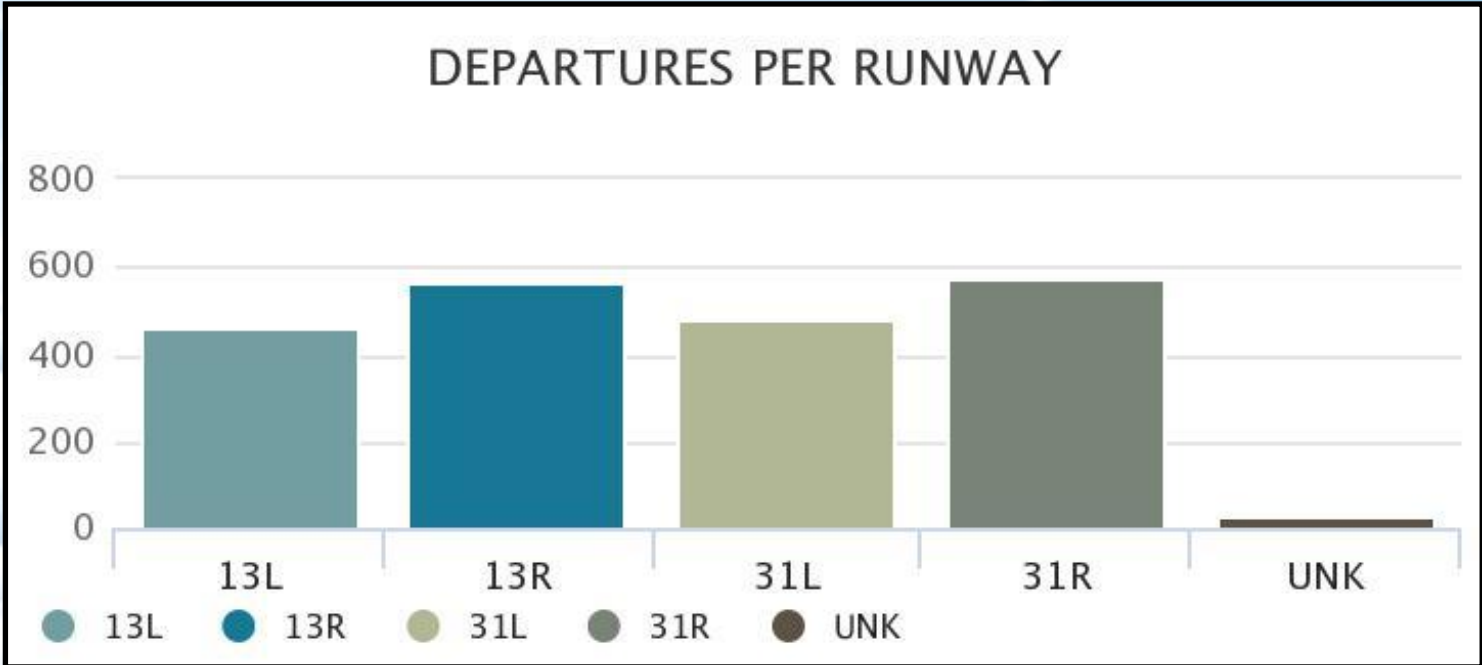
# Arrivals and Departures Per Runway During Preferential Hours

*For the Week of Jan 2nd - Jan 8th*



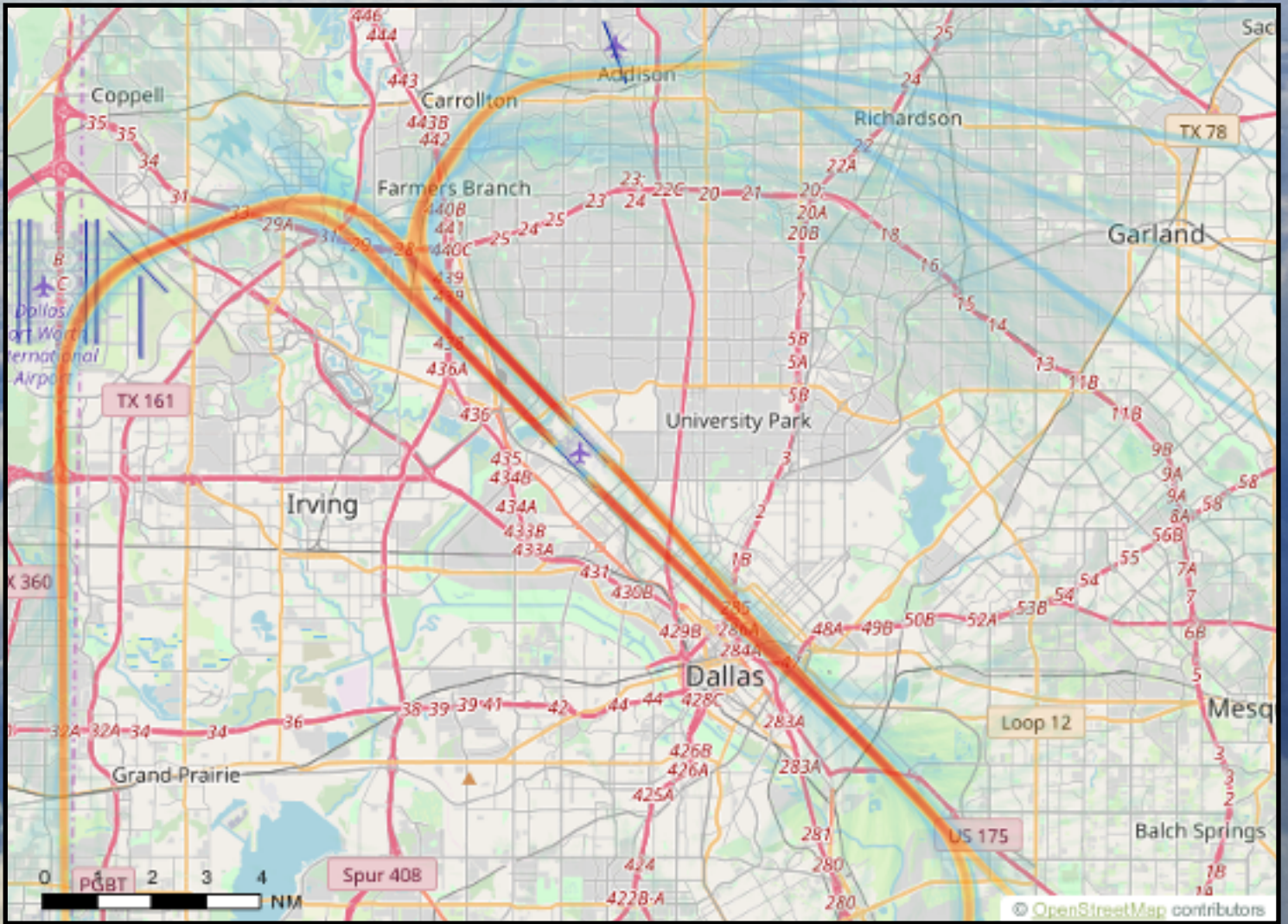
# Arrivals and Departures

*For the Week of Jan 2nd - Jan 8th*



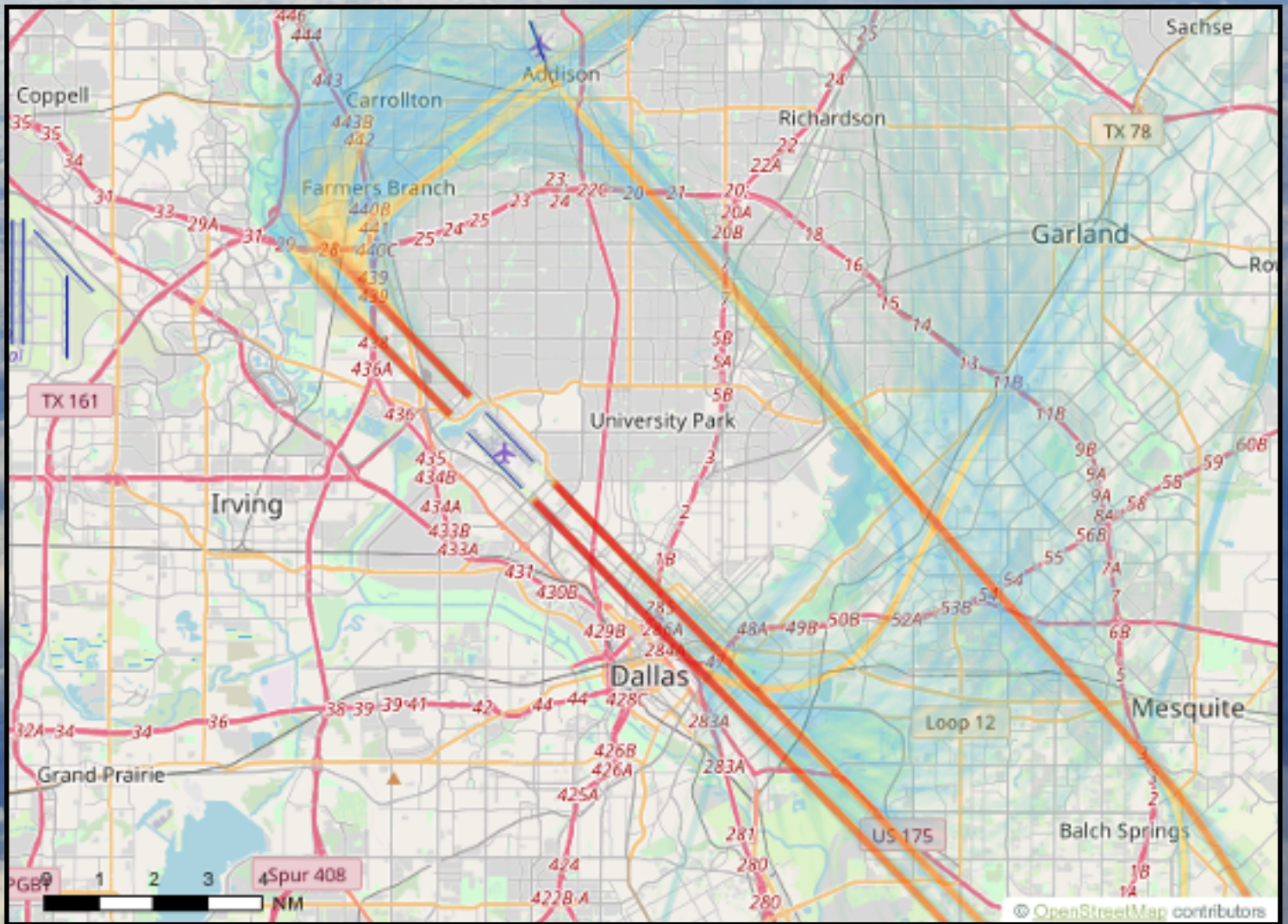
# Departures

*For the Week of Jan 2nd - Jan 8th*



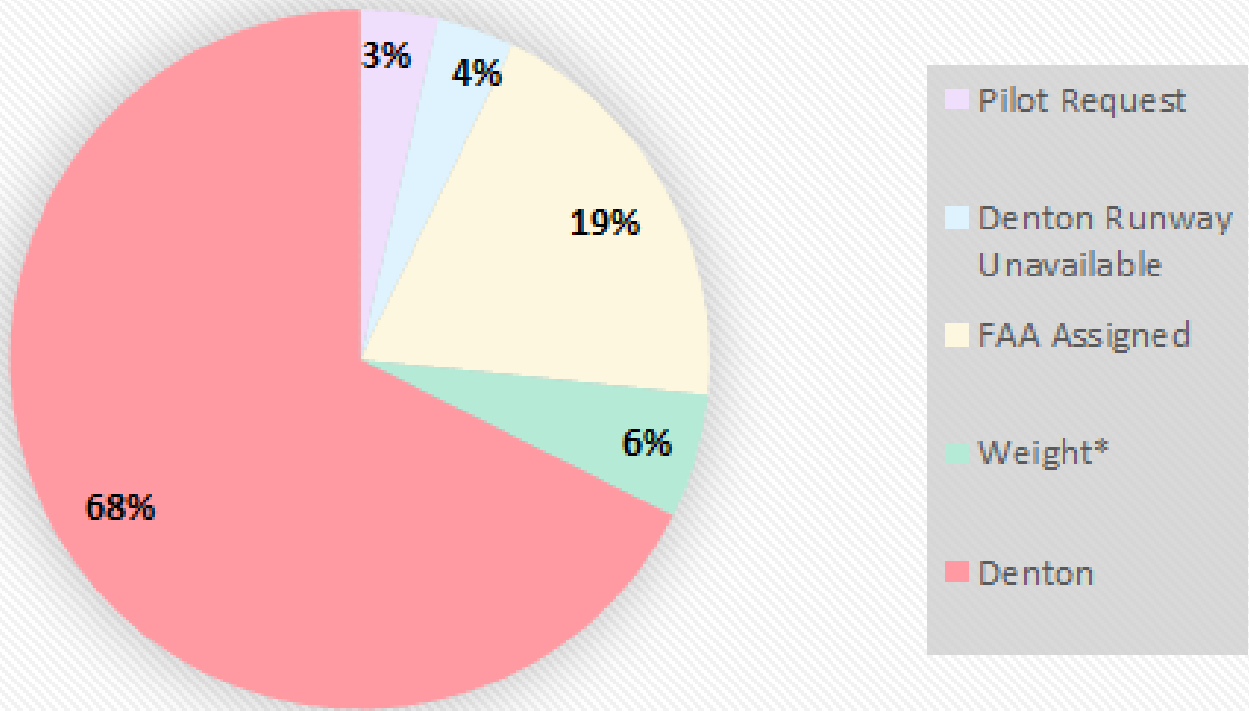
# Arrivals

*For the Week of Jan 2nd - Jan 8th*



# Weekly Preferential Runway Deviations

## Overall: Jan 9th - Jan 15th



Deviation Report - Overall		
	Category	Total Flights
<b>Lemmon</b>	Pilot Request	5
	Denton Runway Unavailable	5
	FAA Assigned	27
	Weight*	8
	<b>Denton</b>	<b>94</b>

\*Nighttime Preferential Runway (Denton RWY 13R/31L) for all jet aircraft and any aircraft weighing over 12,500 pounds, between the hours of 9:00 p.m. and 6:00 a.m.

## RUNWAY & TAXIWAY CLOSURES:

### **NEXT 7 DAYS**

- Sat/Jan 18th 1000 - 1400: Runway 13L/31R closed for ABR 31R MALSR survey and FAA.
- Sat/Jan 18th 1000 - 1400: Taxiway M closed between M5 and M6 for ABR/EAS.
- Tue/Jan 21st 2300 – Wed/Jan 22nd 0600: 13R/31L closed for AFM.

### **ONGOING CLOSURES**

- TWY M BTN TWY B5 AND TWY M5 CLSD
- TWY B2 CLSD
- TWY M BTN TWY B1 AND TWY B3 CLSD
- TWY M2 CLSD
- TWY C5 BTN TWY E AND TWY L CLSD

*\* Please see the airport diagram on the next page for locations of runways and taxiways.*



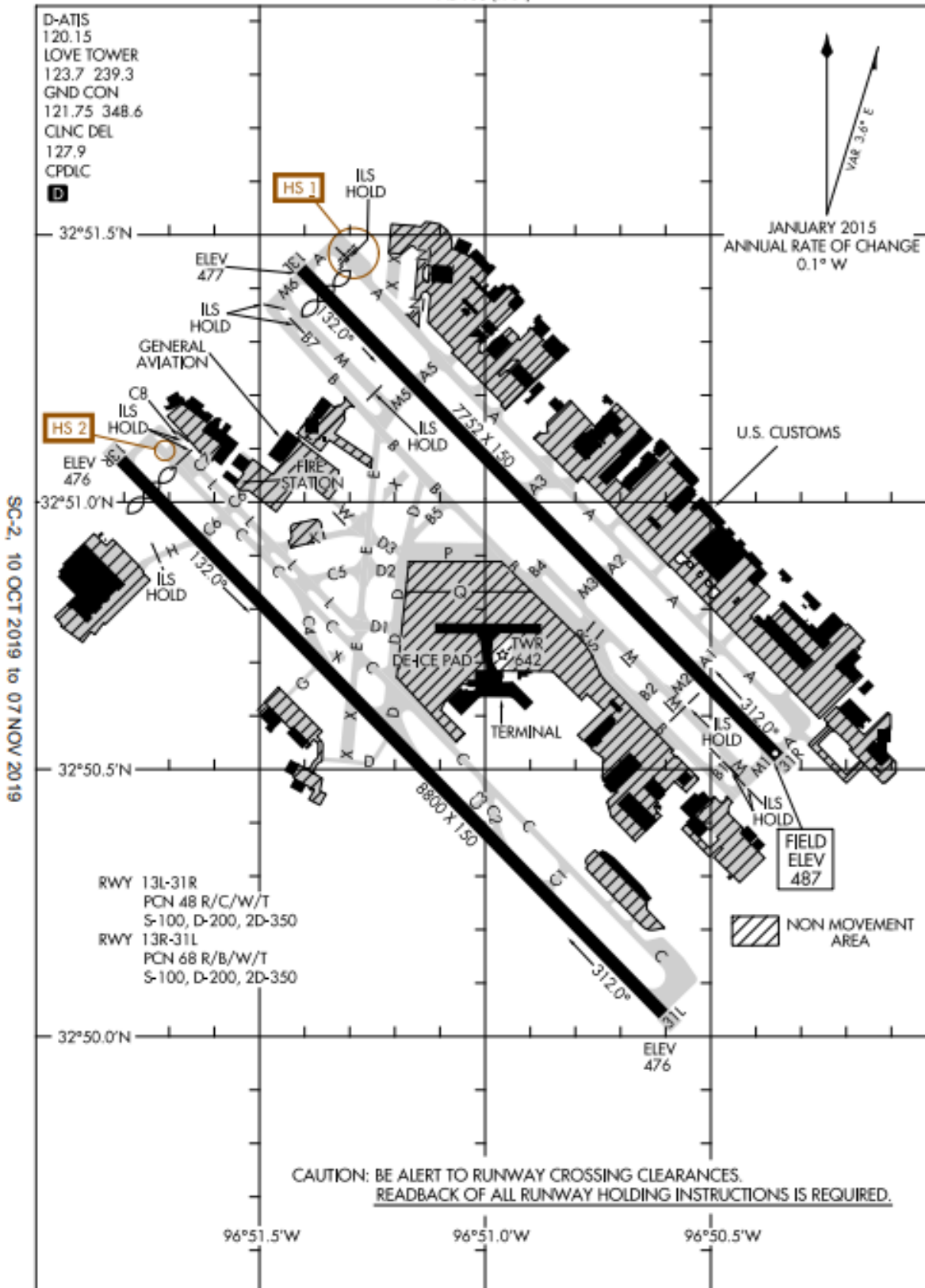
# AIRPORT DIAGRAM

DALLAS LOVE FIELD (DAL)  
DALLAS, TEXAS

AL-106 (FAA)

D-ATIS  
120.15  
LOVE TOWER  
123.7 239.3  
GND CON  
121.75 348.6  
CLNC DEL  
127.9  
CPDLC  
D

VAR 3.6° E  
JANUARY 2015  
ANNUAL RATE OF CHANGE  
0.1° W



SC-2, 10 OCT 2019 to 07 NOV 2019

SC-2, 10 OCT 2019 to 07 NOV 2019

CAUTION: BE ALERT TO RUNWAY CROSSING CLEARANCES.  
READBACK OF ALL RUNWAY HOLDING INSTRUCTIONS IS REQUIRED.

# AIRPORT DIAGRAM

DALLAS, TEXAS  
DALLAS LOVE FIELD (DAL)

19283

In an effort to serve you better, Dallas Love Field has opened the Airport Operation Center (AOC) for your use. The AOC is staffed 24 hours per day to direct your airport related concerns.

If you are submitting an aircraft noise complaint, please call the AOC at 214-670-LOVE (5683).

Translated copies of this newsletter are available upon request by emailing the Department of Aviation Environmental Division at [AVIEnvironmental@dallascityhall.com](mailto:AVIEnvironmental@dallascityhall.com)

Las copias traducidas de este boletín están disponibles a solicitud enviando un correo electrónico a la División de Medio Ambiente de la Aviación al [AVIEnvironmental@dallascityhall.com](mailto:AVIEnvironmental@dallascityhall.com)

For questions or concerns please contact:



**Isaac Ellison**  
**Aviation Noise Specialist**  
City of Dallas | [DallasCityHall.com](http://DallasCityHall.com)  
Department of Aviation

7555 Lemmon Ave

Dallas, TX 75209

O: (214) 670-6843

[AVINoise@dallascityhall.com](mailto:AVINoise@dallascityhall.com)

