



The Department of Aviation Good Neighbor Program Community Meeting

Tuesday, January 18, 2022

**Welcome, the presentation will
start shortly.
Thank you for joining us!**



Tonight's Speaker

Mark Duebner
Director
Department of Aviation

DALLAS LOVE FIELD

January 18, 2022

***Good Neighbor Program Community Meeting
Dallas Love Field Airport***

Good Neighbor Program Meeting Agenda

1. Good Neighbor Program Overview
2. Love Field Project Updates
3. Environmental Updates
4. Community Engagement Updates



Good Neighbor Program – Overview

What is the Good Neighbor Program?



A way to connect with the community on future ideas and planning input.



Create livable, walkable and interconnected neighborhoods in our community.



Operates in and around the airport with the mission to do all the good we can, in all the ways we can.



Good Neighbor Program Goals

We are an airport that happens to be in the middle of a community, but.....

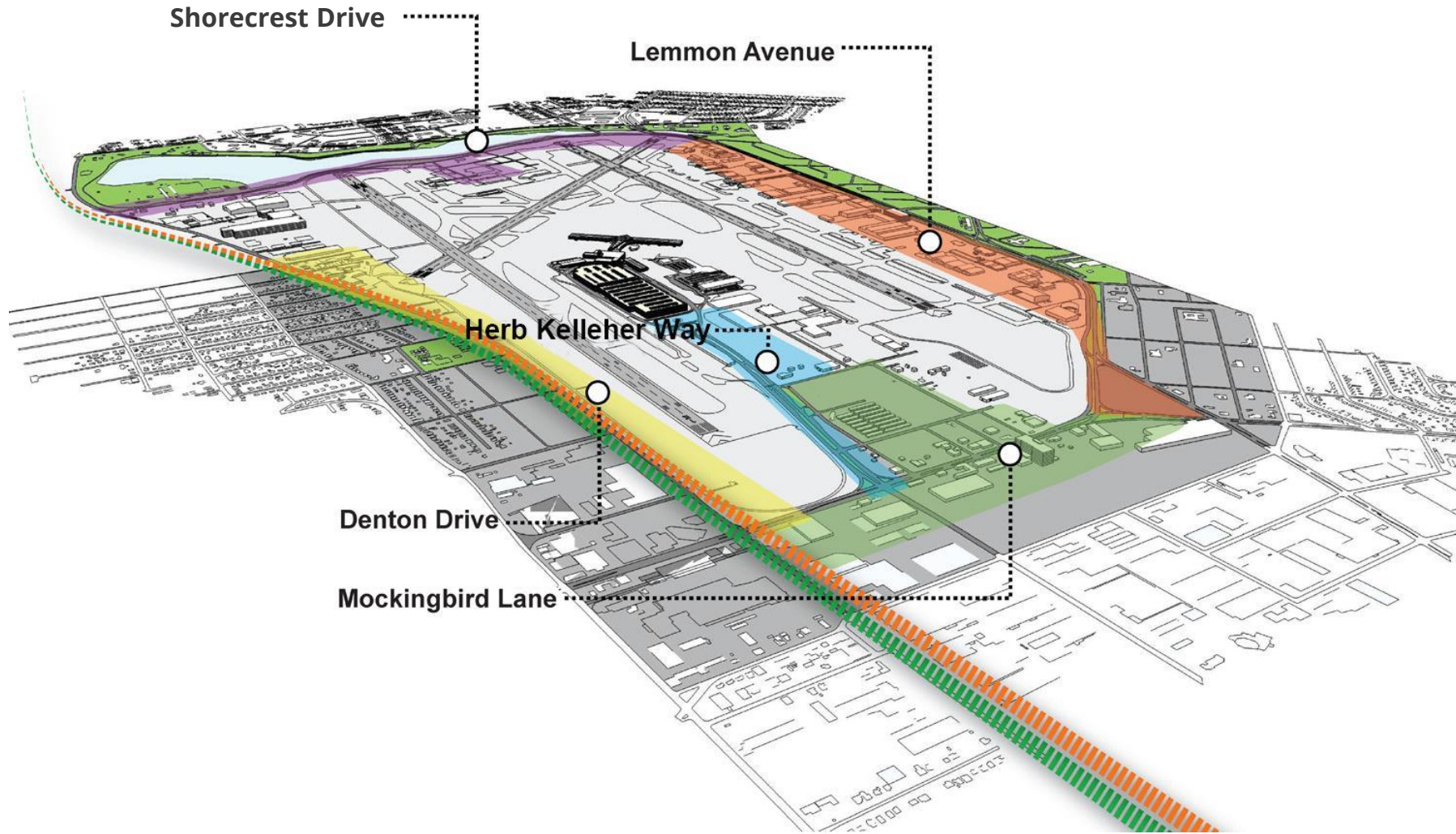
“Our goal is to be a community that happens to be located around an airport...”

- Mark Duebner, Director of Aviation



- Off-airport urban design
- Landscaping and beautification
- Parks, trails and recreational activities
- Signage and traffic improvements
- Pedestrian improvements

Target Areas



***Good Neighbor
Program –
Real Estate Updates***

Business Jet Center Hangar Development



Construction on Hangar N began in August 2021 with expected completion in June 2022.

Development highlights:

- 40,000 sf aircraft storage hangar on Lemmon Avenue
- 9,000 sf attached office
- New hangar will be adjacent and identical to Hangar M, which was completed in 2019

Children's Health Development

Hangar construction expected to begin Summer 2022 with expected completion in Fall 2023.

Development includes:

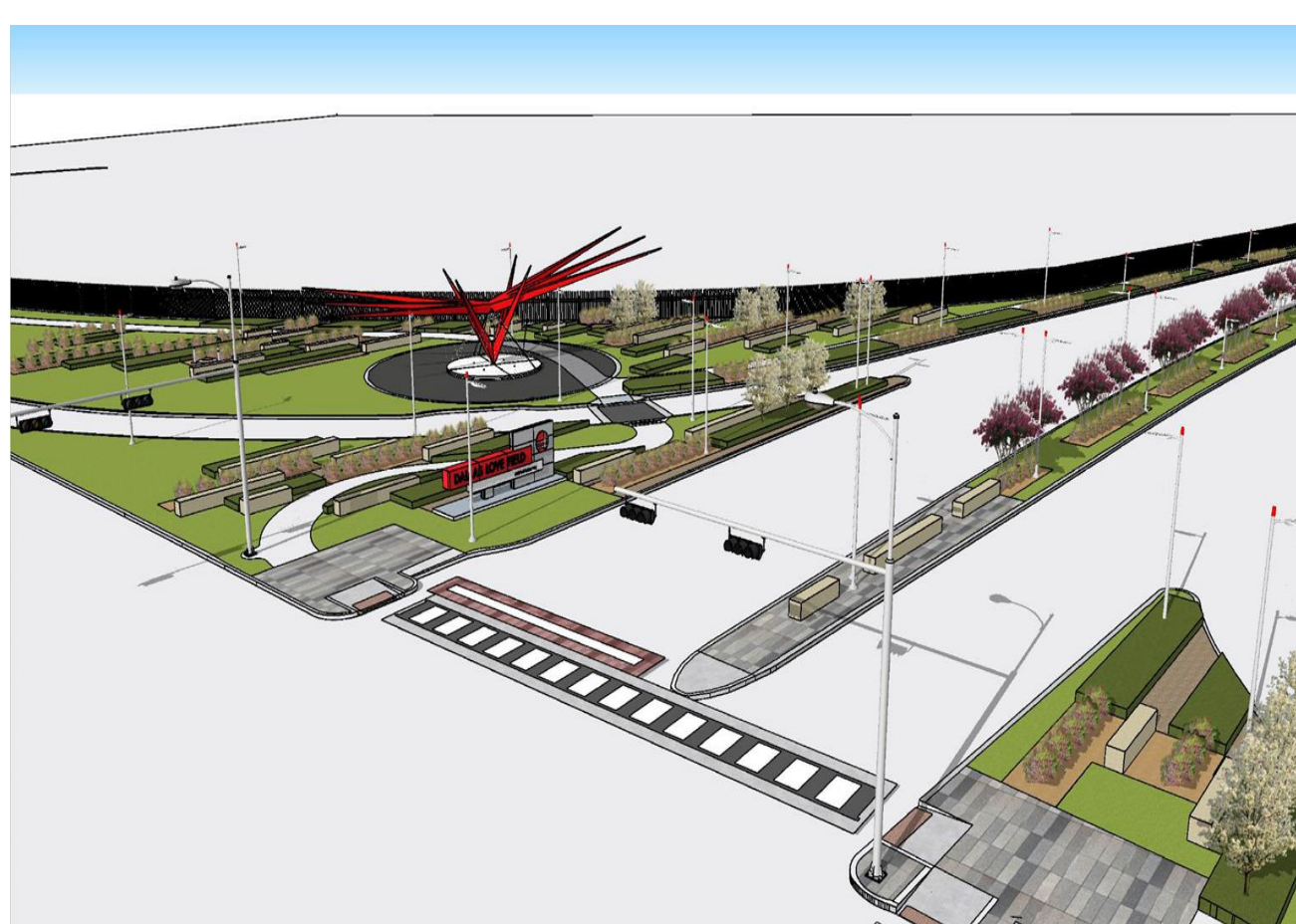
- Hangar and office to support Children's Health transport team
- 15,000 sf hangar
- 20,000 sf two-story office building



Good Neighbor Program –

Infrastructure & Development Project Updates

Entry Road Enhancements



Construction started in late April 2021 with expected completion in Summer 2022.

Enhancements to include:

- Lighting
- Pedestrian paving
- Fencing
- Landscaping
- Signage
- Public Art

Entry Road Enhancements



Lemmon Avenue Streetscape Enhancements

Major design features of the Lemmon Avenue Streetscape Enhancement Project may include:

- Enhanced landscaping, urban design elements and gateway features
- Pedestrian and bicycle paths
- Decorative streetlights
- Intersection improvements with new traffic signals and crosswalks
- Two neighborhood parks
- Enhanced bus shelters

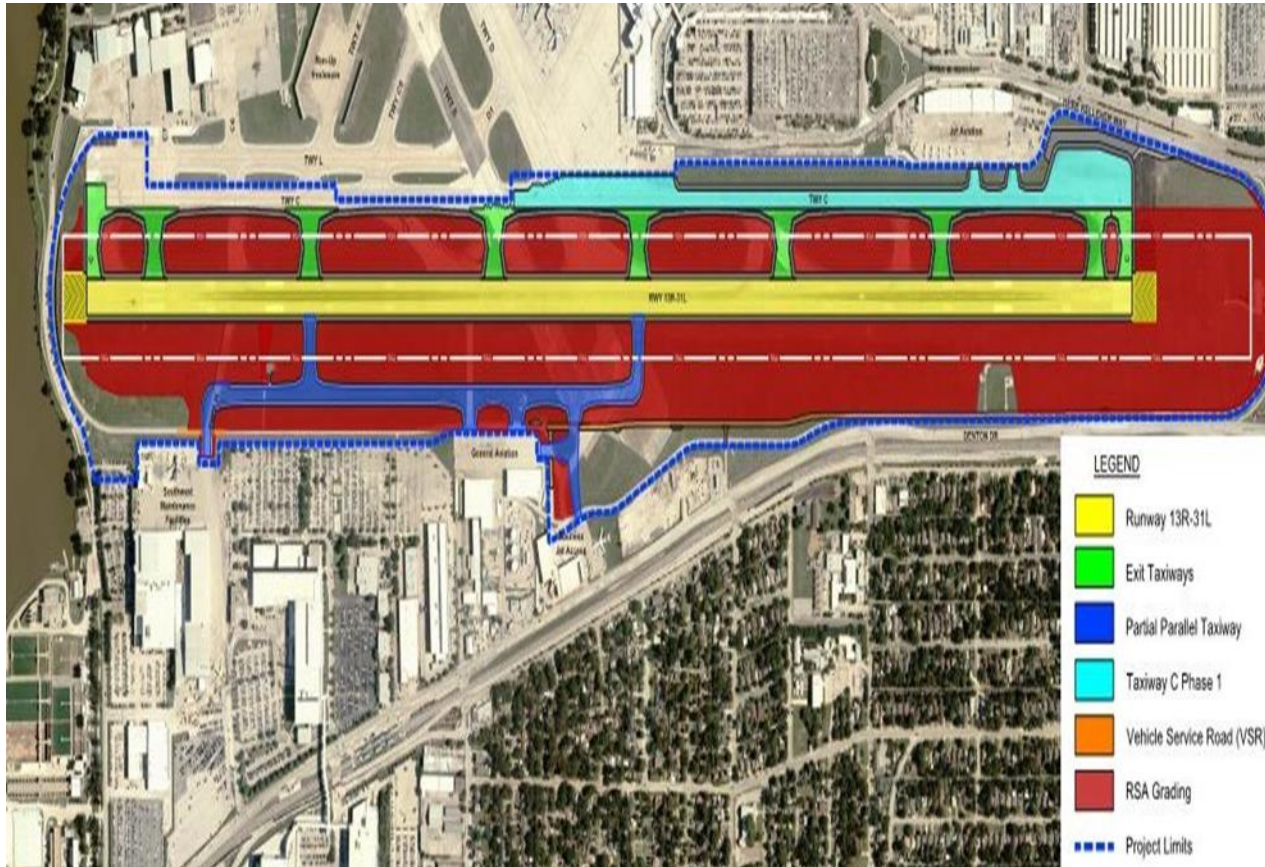


Updates



- 60% design complete for Trail and Streetscape enhancements, design efforts to 95% level continues
- Estimated design completion – Summer 2022
- 10 ft. shared-use trail with enhanced pedestrian crossings connecting to the Bachman Lake trail system
- Project limits extended to Airdrome and Mockingbird (to Coleville)
- Completed Parks Master Plan
 - Midway Manor Park
 - North Neighborhood Park
- Coordination with other City departments, DART and the FAA
- 2 Secondary Gateway Features at Lovers Lane and Shorecrest Drive

Reconstruct Runway 13R-31L



PROJECT DESCRIPTION: The project includes the replacement of the existing pavement system, improvements to the existing drainage & storm water control system, replacement of airfield lighting, improvements to communications pathways and ARFF roadway system.

Project status: Construction
Estimated Project Completion: Late 2022
Estimated Completion of Runway: Spring 2022

Runway 13R-31L Reconstruction



- Aircraft operations have shifted to 13L-31R (Lemmon Avenue runway) while RWY 13R/31L is closed
- Work is progressing with some delays due to ongoing supply chain issues, labor shortages and weather delays that occurred early in the project
- Overall project is 46% complete; Phases 2/3 (runway) is 60% complete
- Taxiway Charlie reopened November 20th
- Taxiway Tango reopened December 21st

Runway 13R-31L Reconstruction



Figure 1 - RWY 13R looking SE



Figure 2 - RWY 13R/31L and TWY C under construction

Runway 13R-31L Reconstruction



Figure 3 - New TWY T under construction (Phase 1) and north half of RWY 13R/31L under construction (Phase 2)



Figure 4 - TWY C under operation

Runway 13R-31L Reconstruction

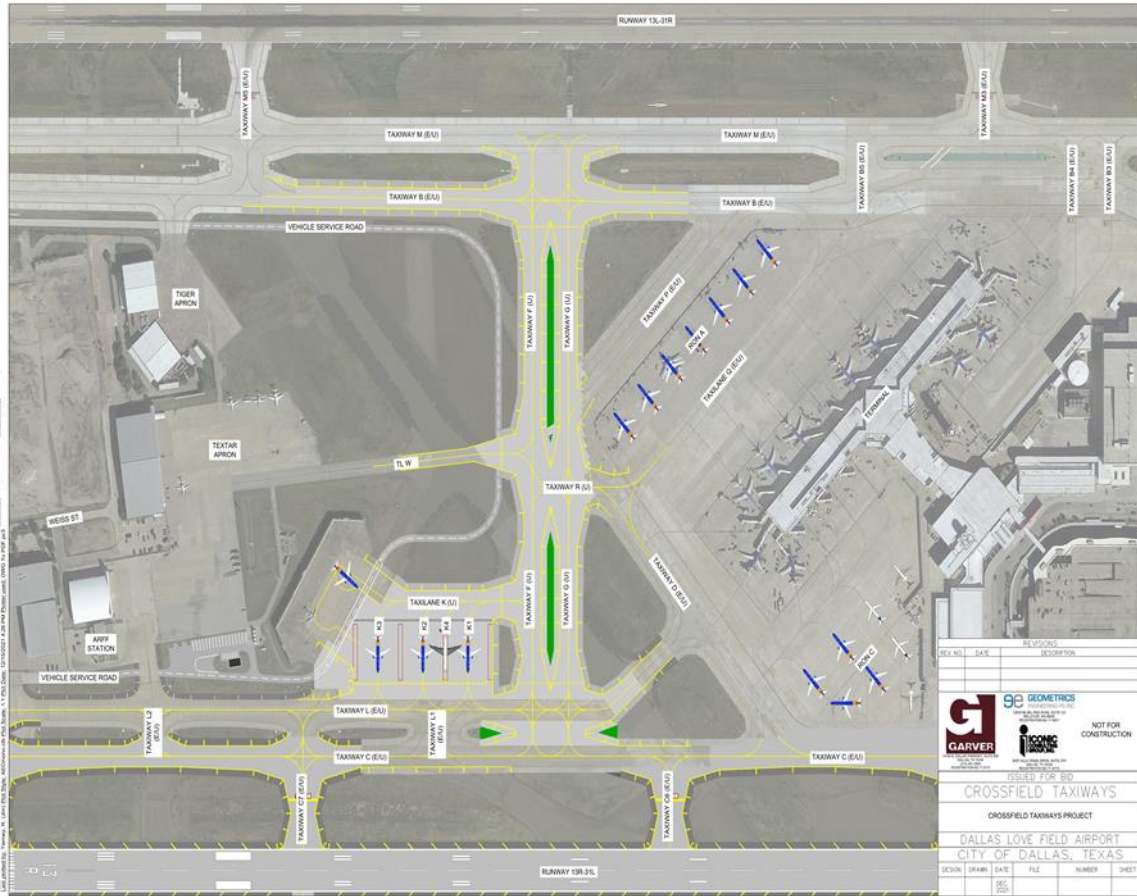


Figure 5 – RWY 13R/31L with reinforcements and placing final concrete pavement layer



Figure 6 – RWY 13R/31L, final pavement layer preparation

Cross-Field Taxiways



PROJECT DESCRIPTION: This project will include the construction of Crossfield Taxiways and connecting taxiways, it will also include the construction of the proposed Remain Over Night (RONs), deicing areas, analyze the location of the run-up area and recommend relocation/reconfiguration.

Project status: Design Completed
Estimated Construction Start: August 2022

Cross-Field Taxiways

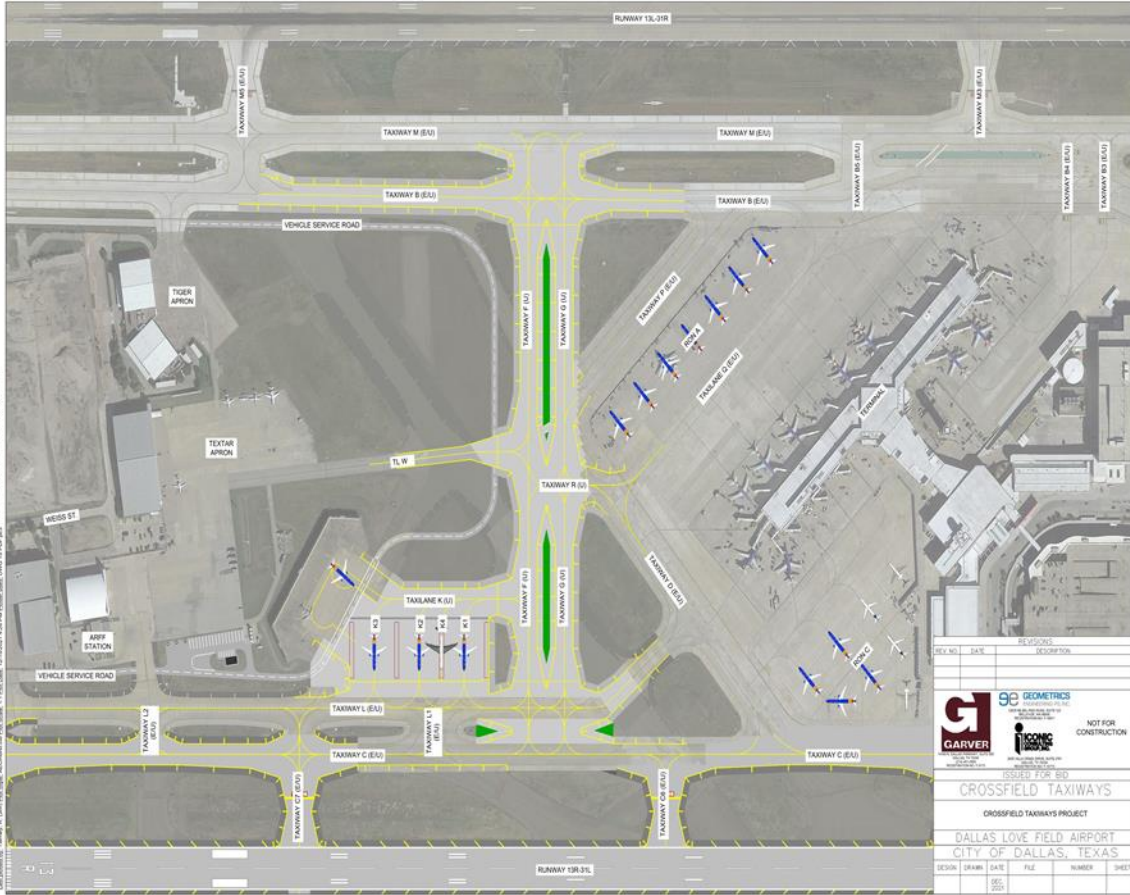


Figure 1 – Proposed Cross-Field TWYs Design Layout



Figure 2 – Existing Airfield Layout

Good Neighbor Program –

Alternate Entry Project Updates

Alternate Entry

The Mockingbird Lane/Herb Kelleher Way intersection is the only entrance into Love Field, the busiest medium hub airport in North America.

- Serving over 80,000 vehicles/day, the intersection often slips to Level of Service “F” (intersection failure)
- During incidents or lane closures, long backups occur, impacting first responders' access to the airport
- Airport operations have been severely impacted during incidents, causing security and operational risks
- Any incident blocking the entrance can critically burden passenger access and evacuation operations
- The 2018 Master Plan Update for Love Field recommended the airport address the above issues

Background



- Initially, alternates 1-5 were evaluated for mitigation of traffic issues. A Diverging-Diamond Interchange at Mockingbird and Cedar Springs Road was recommended.
- With increasing traffic after the repeal of Wright Amendment it was determined that the solution will not adequately address LOS. More, it was not feasible to construct a diverging diamond interchange without severely impacting airport operations.
- Alternates 6-11 were added for further evaluation due to the above.

Alternate Entry Analysis



The 11 alternatives were evaluated on the following criteria:

- Traffic impacts
- Reduction in vehicle miles travelled (VMT)
- Ability to accommodate an automated people mover (APM) system
- Provides an alternate route for emergency needs
- Five (5) alternatives were shortlisted based on the Analysis

Shortlisted Alternatives – Evaluation Matrix

		Traffic Impacts	VMT Reductions	APM Applicability	Emergency Entrance/Exit	SHORTLISTED CONCEPTS
SOUTH	1-3	Challenging	Critical Impact	Critical Impact	Critical Impact	X
	4	Negative Impact	Critical Impact	Critical Impact	Critical Impact	X
	5	Critical Impact	Critical Impact	Critical Impact		X
NORTH	6	Excellent	Excellent		Excellent	→
	7	Excellent	Excellent		Excellent	→
	8	Excellent	Excellent		Excellent	→
EAST	9	Good	Excellent		Excellent	→
	10	Excellent	Excellent		Excellent	→
WEST	11	Challenging	Good	Critical Impact	Excellent	X

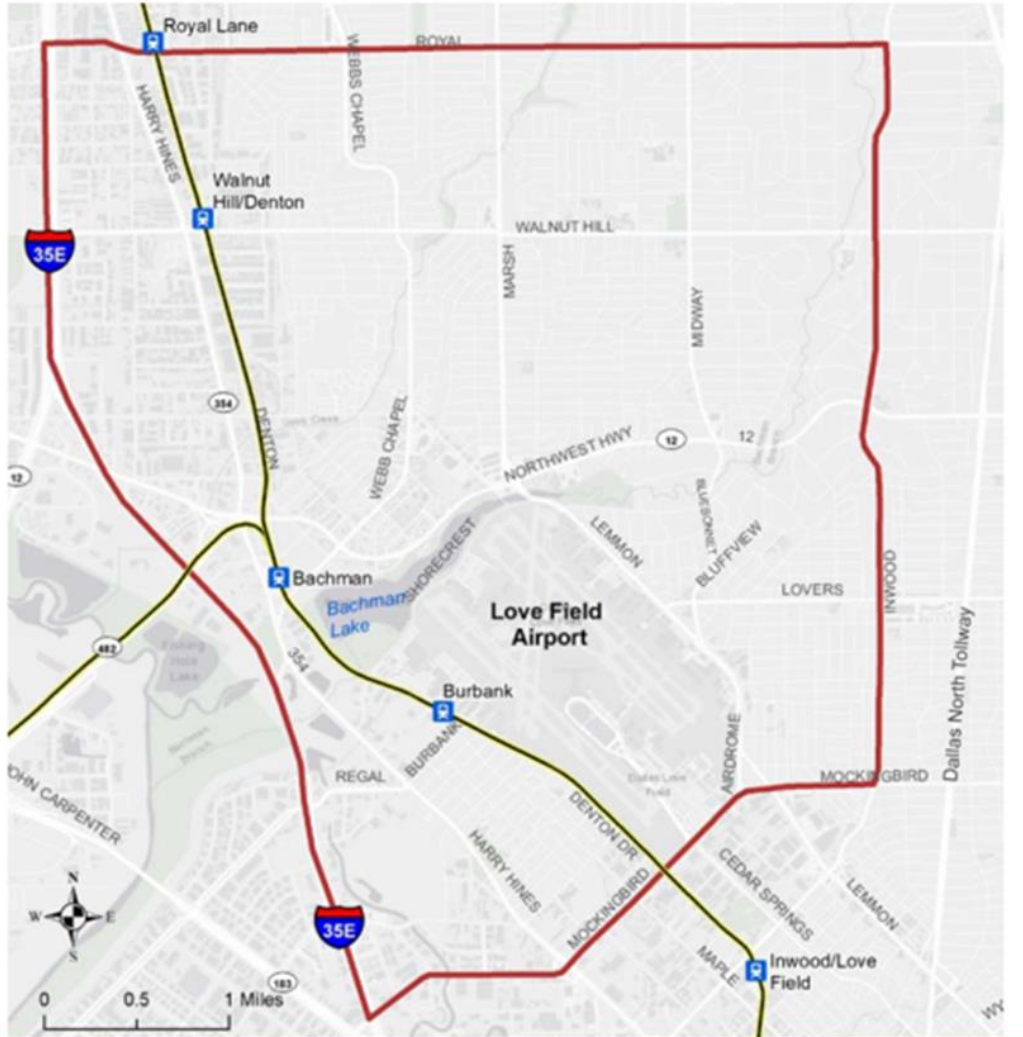
LEGEND

Excellent
Good
Neutral
Challenging
Negative Impact
Critical Impact

- Shorecrest Drive - Central Airfield
- Northwest Highway - Central Airfield
- Shorecrest Drive - West of Runway 13R-31L
- Lemmon Avenue – Shorecrest Dr.
- Lemmon Avenue – George Coker

- | | |
|---|---|
| 1. Conventional Urban Diamond Interchange | 7. Bridge from Northwest Hwy Central Airfield |
| 2. Diverging Diamond Interchange | 8. Shorecrest Dr west of Runway 13R-31L |
| 3. Direct Ramp Interchange | 9. Lemmon Ave/Shorecrest Dr Intersection |
| 4. U-Turn at Airdrome | 10. Lemmon Ave/George Coker Cir Intersection |
| 5. Mockingbird Ln/ Waddell Ave | 11. Denton Dr |
| 6. Shorecrest Dr. Central Airfield | |

Bachman Lake Area Planning Study



- In August 2020, at City's request, the North Central Texas Council of Governments (NCTCOG) undertook a planning study to identify improvements in the Bachman Lake/Love Field area.
- The study included evaluation of alternate entry options for Love Field.
- A preliminary summary of the study findings can be found at [NCTCOG's website](#).

Alternate Entry – Next Steps

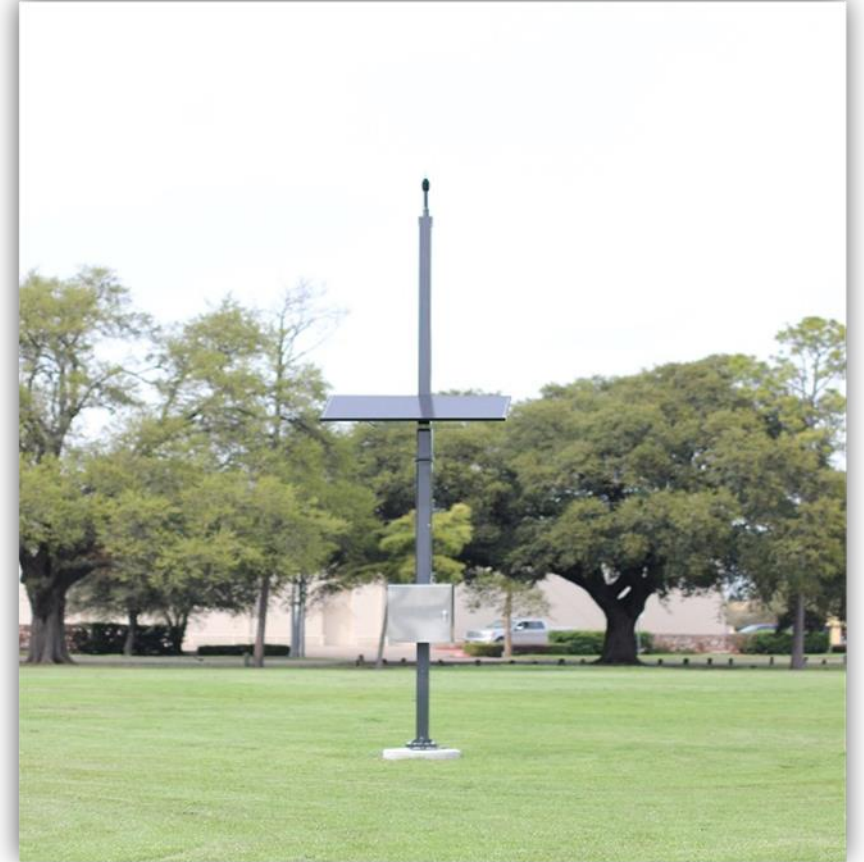
- NCTCOG will present finding and recommendations of Bachman Area Planning Study to City Council.
- Department of Aviation will present Alternate Entry shortlist to City Council for selection of preferred alternate.
- Department of Aviation will undertake preliminary design and environmental analysis of option recommended by Council.

***Good Neighbor
Program –
Environmental Updates***

Voluntary Noise Program

- ❖ To better respond to the concern of our neighbors, the City of Dallas' Department of Aviation has developed a Voluntary Noise Control Program for the Airport.
- ❖ DOA serves as a liaison between the community and FAA while also disseminating noise information to stakeholders through outreach.
- ❖ The Federal Aviation Administration controls the National Airspace System in the United States.
- ❖ FAA's Air Traffic Control directs commercial air traffic to and from DAL Airport.
- ❖ DAL's Noise and Operations Monitoring System (NOMS) utilizes Casper Airport Solutions as its advanced system that enables the City of Dallas to monitor and better understand aircraft noise in the vicinity of the Airport. The system is comprised of 4 fixed noise monitors in the community.

For noise concerns visit
<https://dal.noiselab.casper.aero/>
For noise inquires email
AVINoise@dallascityhall.com



Operation Statistics (Oct – Dec 2021)

	Air Carrier	General Aviation	Other	Total Operations
October	11,360	7,532	250	19,142
November	10,897	7,641	248	18,786
December	10,595	6,948	300	17,843

Definitions

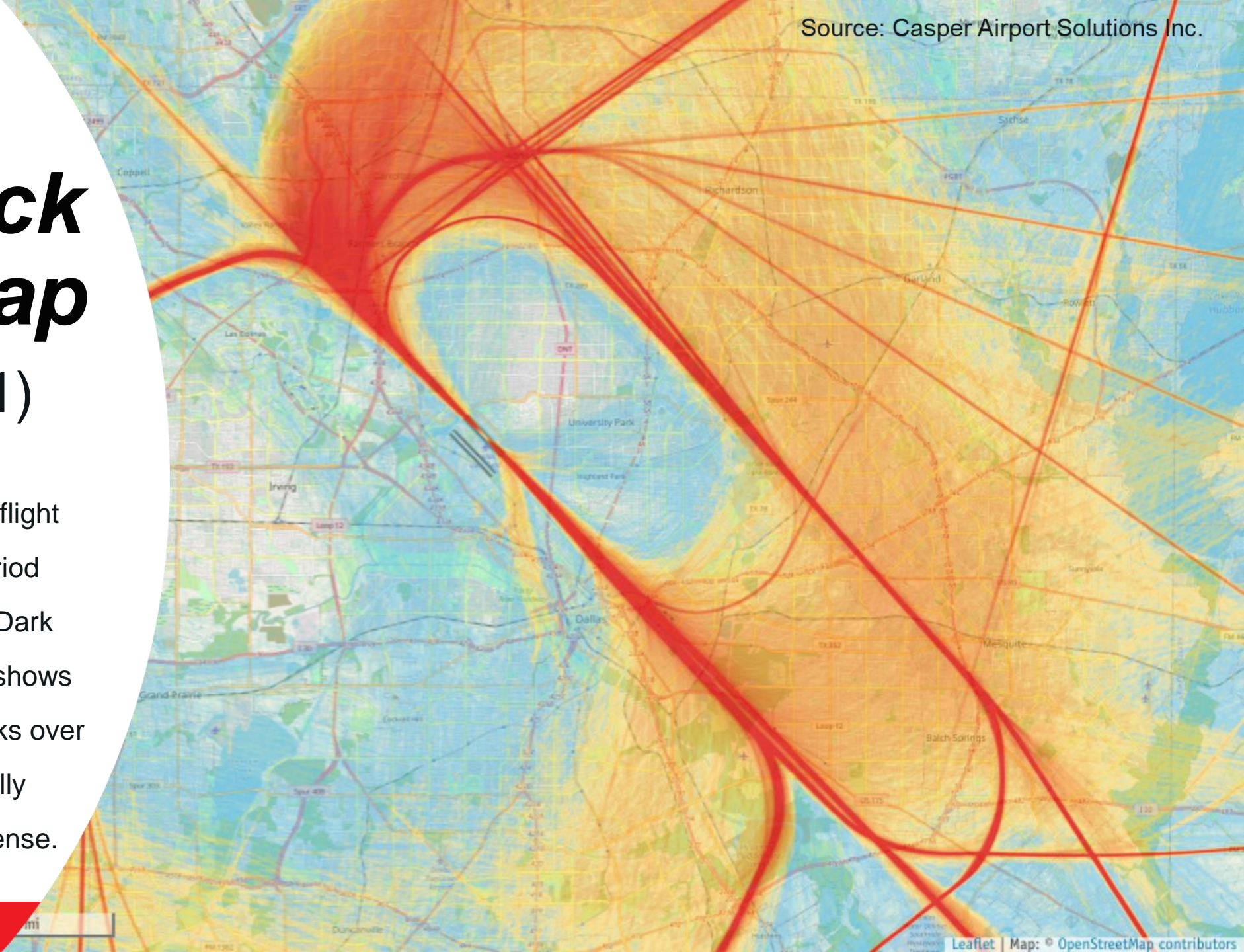
Air Carrier – A commercial carrier utilizing aircraft as its means of transport; an airline, as for passengers or freight.

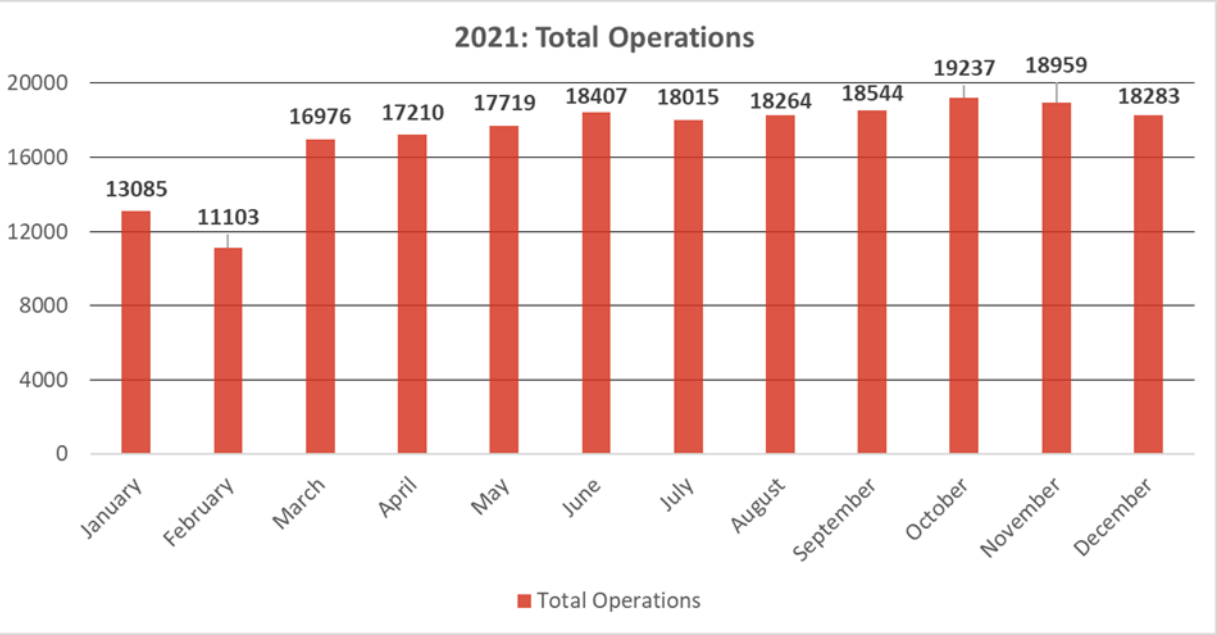
General Aviation – All civil aviation operations other than scheduled air services and non-scheduled air transport operations for compensation or hire.

Other – Medical and Military flights

Radar Track Density Map (Oct – Dec 2021)

The following map takes all the flight track data for the given time period and creates a line density plot. Dark red in the middle of the picture shows the highest density of flight tracks over the runways. The colors gradually move out to blue as the least dense.



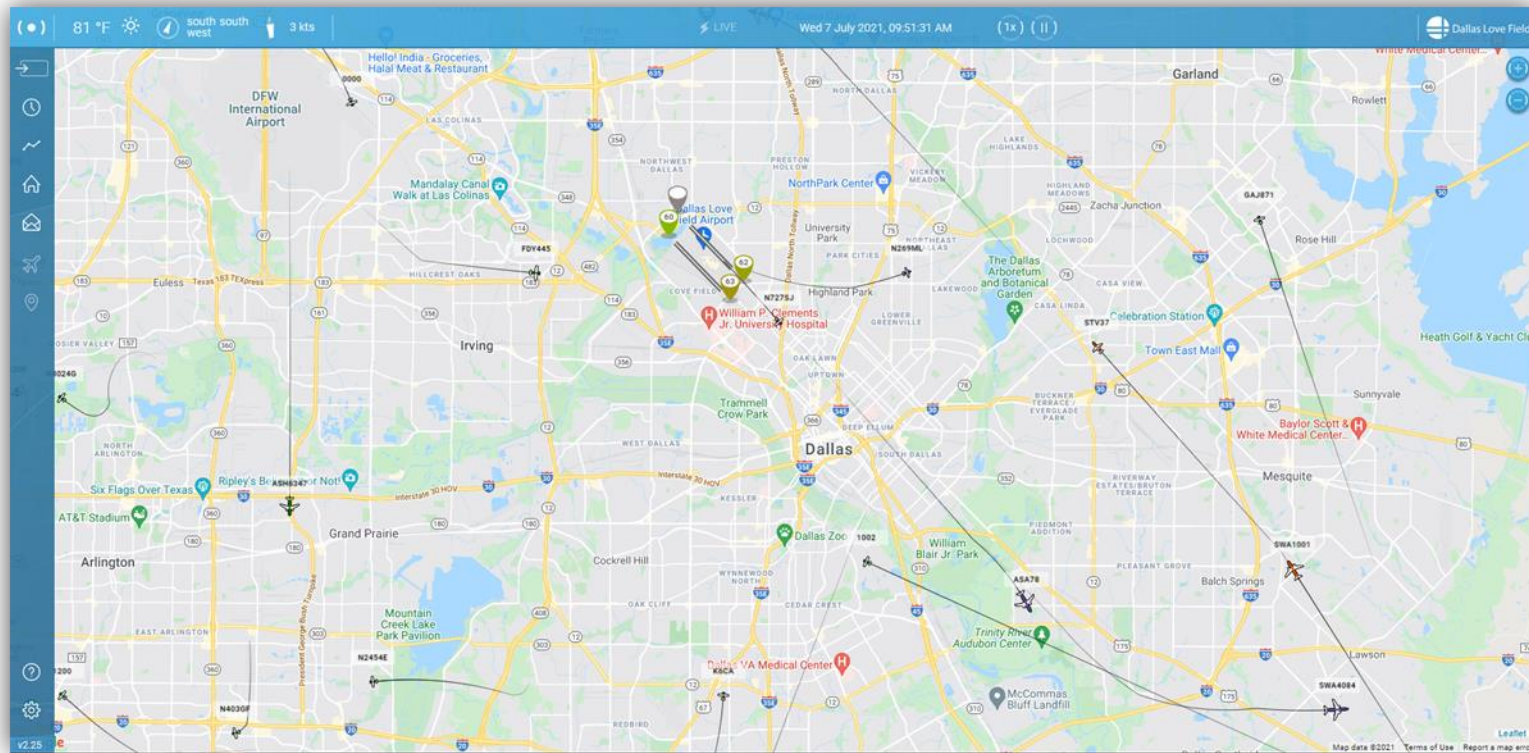


CY 2021 Total Operations & Complaints

Source: Casper Airport Solutions Inc.

Flight Tracker

As part of the Voluntary Noise Program, Dallas Love Field Airport invested in an online tracking system for the movement of flights and air traffic patterns within the DFW Metroplex. Flight Tracker along with Casper NoiseLab allows concerned individuals to research data about flights to and from Dallas Love Field Airport or Dallas Executive Airport as well as any transitional air traffic through the region. The system also simplifies the process of filing a noise complaint by offering an easy, online option for residents to register noise concerns.



<https://flighttracker.casper.aero/dal/>

***Good Neighbor
Program –
Airline Activities***

Airline Flight Schedules



- 2021 Holiday Schedule was similar to the 2019 activities.
- COVID-19 variants have continuously impacted airline bookings.
- Bookings are rebounding and we will continue to monitor.



***Good Neighbor
Program –
Community
Engagement Updates***

Department of Aviation Blood Drive (January 12th)



DAS/DISD Partnership on VIRTUAL Career Days



**FACE COVERINGS
REQUIRED**


THANK YOU

for helping to protect our students and staff by covering your mouth and nose.

GNP Contact Information



Program Hotline

 214-670-LOVE

Program Email

 LoveFieldGNP@DallasCityHall.com

Program Website

 www.dallas-lovefield.com/GoodNeighbor

Community Engagement



We believe in being a good neighbor to our community.



Are your priorities still the same or have they changed?



What would you like to see with community connections?



What else can make us a good neighbor?

Questions



Questions

- 1. Q: Request for live field trees along Lemmon Avenue
 - A. DOA is currently finalizing the Lemmon Avenue Streetscape Enhancement Project. The project will include sidewalks, landscaping, bicycle trails and lighting.
- 2. Q: Love to learn about new running and walking trails as well as funding for how these areas will be maintained for the next 10+ years. I am highly against developing something that won't have a plan or budget to be maintained.
 - A. The presentation on the Lemmon Ave Streetscape Enhancements project shows depiction of walking trails to be developed, along with bicycle paths and other life safety enhancements such as lighting and intersection improvements. This project is being funded out of our capital budget. Once the project is complete maintenance will be funded out of our operation & maintenance budget.

Questions

- 3. Q. Looking out for contracting opportunities with DAL
 - A. For information about opportunities with the Department of Aviation and the City of Dallas, please ensure you register as vendor through the City's Vendor Procurement Portal Bonfire at <https://dallascityhall.bonfirehub.com/portal/?tab=login>. This website lists all of the City's open solicitations. For more information, you can also contact the Office of Procurement Services ResourceLink Team at 214-670-3326 or visit their website at, <https://dallascityhall.com/departments/procurement/Pages/default.aspx>.
- 4. Q. Please explain the delays to runway construction and is it true the other runway is scheduled for closure following completion of the current project?
 - A. The reconstruction of Runway 13R-31L (east side runway) has been delayed as a result of supply chain issues and labor shortages which are a result of COVID impacts. Runway 13L-31R (westside runway) has a life expectancy of another ten years but because of the increase in traffic on this runway the design and reconstruction of it may have to start sooner. 13L-31R (westside) runway will be evaluated after traffic on both runways is re-established.

Questions

- 5. Q. When will the runways both open up again?

A. Runway 13R-31L is expected to be re-opened by Spring 2022 but with the ongoing supply chain issues and labor shortages (COVID impacts) the reopening date may change.

Q. Also, when they are both open do they split traffic 50-50? I read somewhere the Lemmon Ave side is more for smaller planes. But I am not sure if that is true.

A. Runway usage is determined by the FAA Airport Traffic Control Tower. There are various conditions which determine runway use including but not limited to weather, availability, and regional air traffic to all area airports. Safety of aircraft operations will always be the priority for Air Traffic Control (ATC).

Questions

- 6. Q. I would like to understand what is happening to Shorecrest Road and its impact on recreational areas.
 - A. The Lemmon Ave. Streetscape Enhancements project is only providing a trail from Lemmon Ave. to the intersection at Webb Chapel & Shorecrest (on airport property). The remaining portion of Shorecrest Dr. that is not airport property will be developed by a partnership project between the City of Dallas Department of Transportation and Dallas County under the County's MCIP program. Their plan is to widen Shorecrest Dr. to 4 lanes with bike lanes.
- 7. Q. I'd like to know how small disadvantaged businesses in the low-income districts of Dallas can participate on contracts for the airport. For instance, I found out late about the customer service assessment for the airport and it is in my core area.
 - A. For information about opportunities with the Department of Aviation and the City of Dallas, please ensure you register as vendor through the City's Vendor Procurement Portal Bonfire at <https://dallascityhall.bonfirehub.com/portal/?tab=login>. This website lists all of the City's open solicitations. For more information, you can also contact the Office of Procurement Services ResourceLink Team at 214-670-3326 or visit their website at <https://dallascityhall.com/departments/procurement/Pages/default.aspx>.

Contact Dallas Love Field Airport

Mark Duebner

Director of Aviation



214-670-6077

Dallas Love Field Administration

7555 Lemmon Avenue, Dallas, TX 75209

Dallas Love Field Terminal

8008 Herb Kelleher, Dallas, TX 75235



Dallas-LoveField.com



Thank
You

Thank You
for joining us