



Dallas Love Field Noise Dynamics



Contents

- Noise Corner.....2
- Flight Operations Report.....4
- Noise Complaints.....6
- Flight Track Density Map.....7
- 65 DNL Contour Map.....9
- Scheduled Runway Closures...10
- Airport Diagram.....11

Noise Corner

Introduction

Thank you for subscribing to Dallas Love Field's (DAL) Monthly Noise Dynamics. This newsletter is published for those interested in the topic of aircraft noise here at Dallas Love Field by providing useful information, monthly data, upcoming events and news.

Residents interested in receiving our monthly noise dynamics can send an email request to AVINoise@dallas.gov

Upcoming Events

DOA will host the first merged Good Neighbor Program (GNP) and Love Field Environmental Advisory Committee (LFEAC) meeting on:

January 30th 6:00 PM - 7:30 PM at the Aviation Transportation Regulation Building, 3448 W. Mockingbird Lane, 2nd floor, Dallas, TX 75235.

The in-person registration link can be found here:

<https://www.dallas-lovefield.com/airport-info/community/good-neighbor-plan/upcoming-meetings>

The meeting can also be attended virtually through Microsoft Teams **[here](#)**.

Noise Corner

Outreach and Educational Activities

If you would like the Airport Noise Monitoring Specialist to attend neighborhood meetings, schools, or any other outreach activities to serve as a resource on aircraft noise related concerns, please email AVINoise@dallas.gov to let us know.

Helpful Links (Click on Icon to access link)



View information regarding aviation noise and/or the Voluntary Noise Program. NoiseLab allows you to obtain reports, view runway closures and access archived documents such as: LFEAC (Love Field Environmental Advisory Committee) presentations, annual DNL contour reports and newsletters.



Understand aircraft flight pattern, self-investigate aircraft events and submit noise concerns.



Access Dallas Executive Airport's Flight Tracker.



A demonstration of Flight Tracker

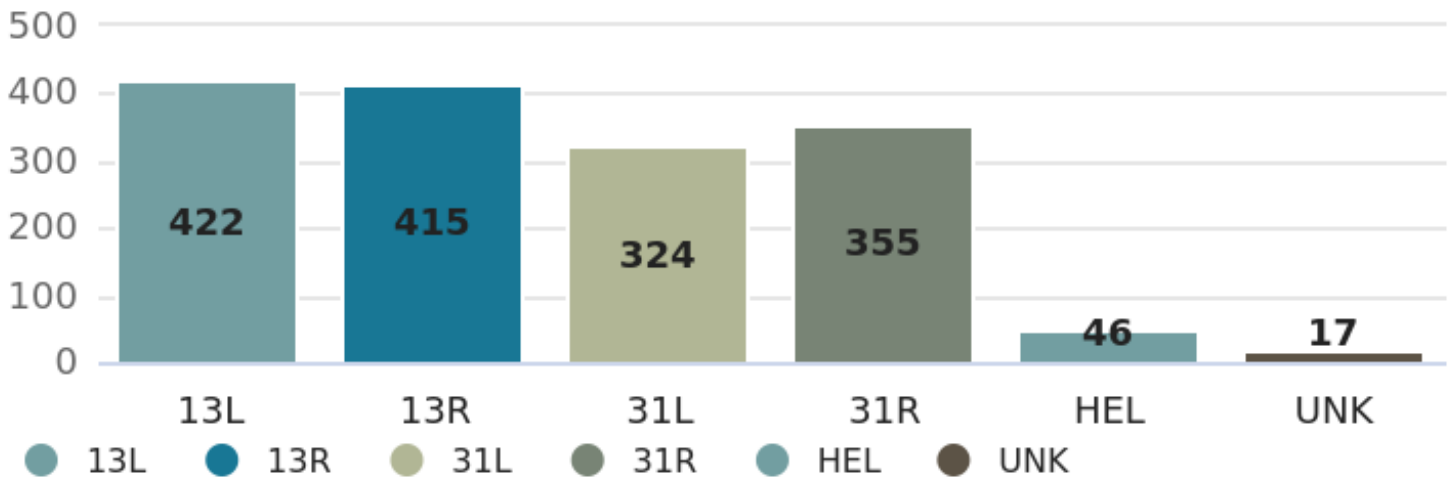


An overview of the National Airspace System around the DFW Metroplex.

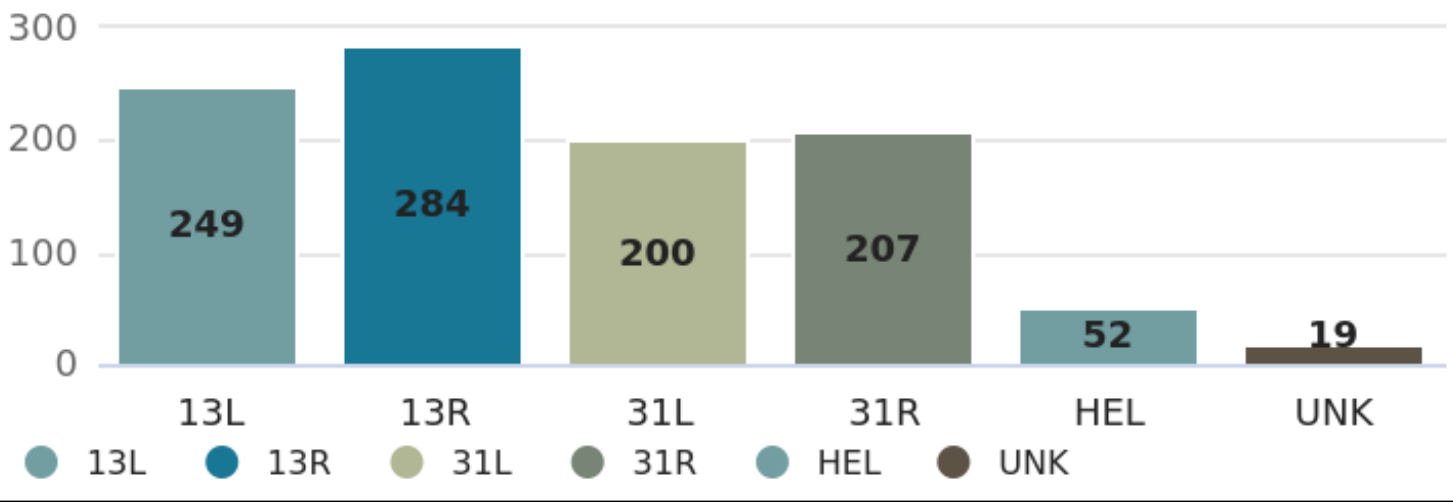
December

Arrivals and Departures From 9 p.m. - 6 a.m.

ARRIVALS PER RUNWAY



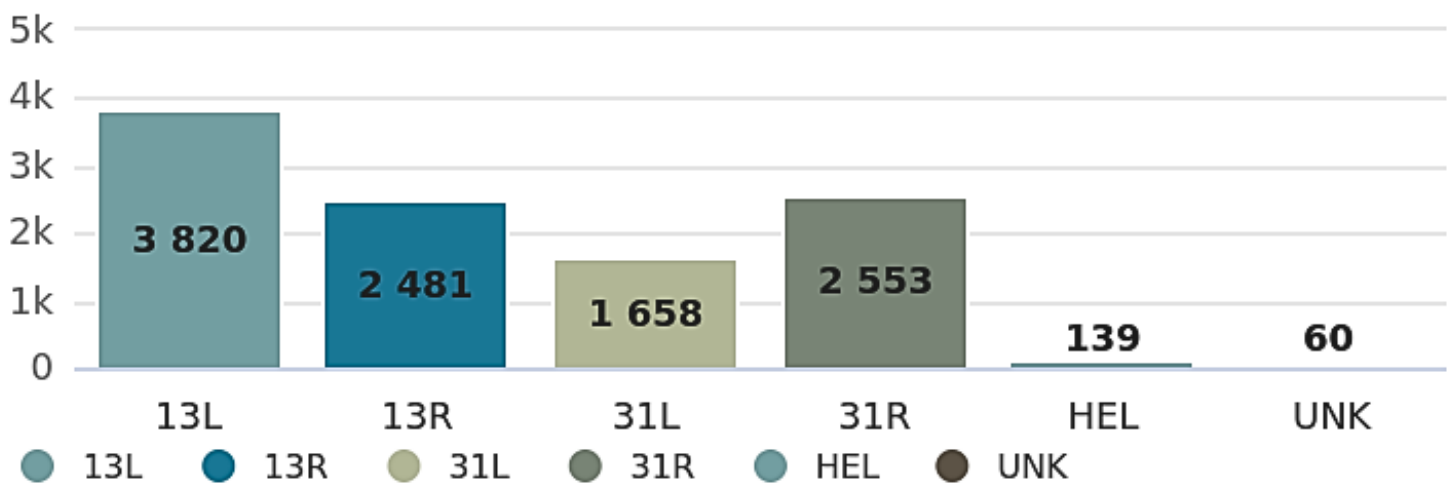
DEPARTURES PER RUNWAY



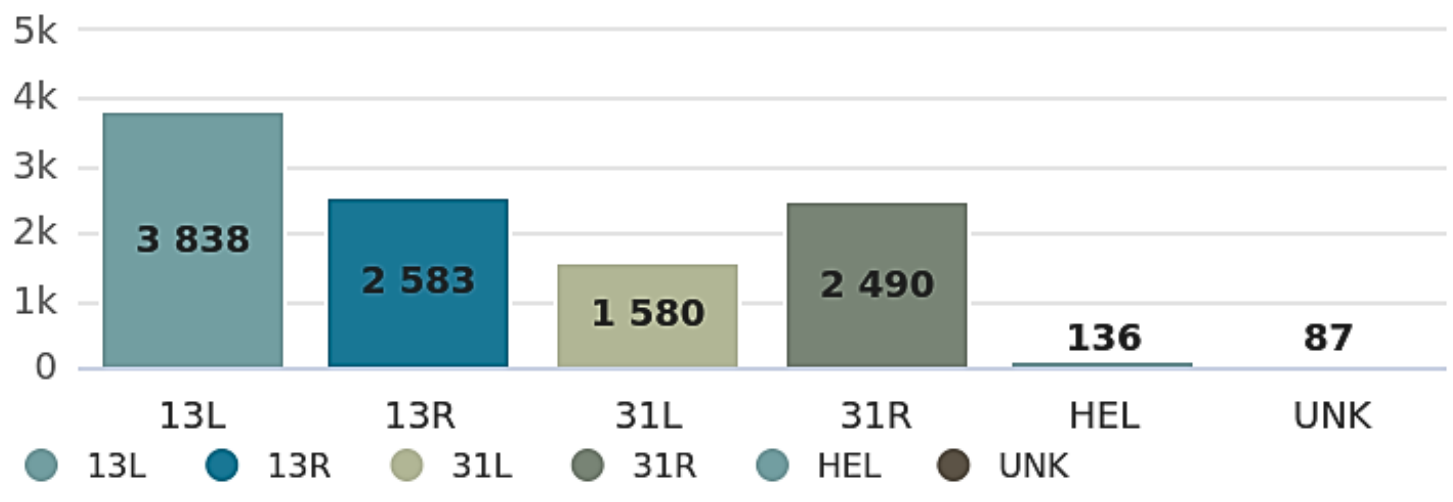
December

Arrivals and Departures

ARRIVALS PER RUNWAY

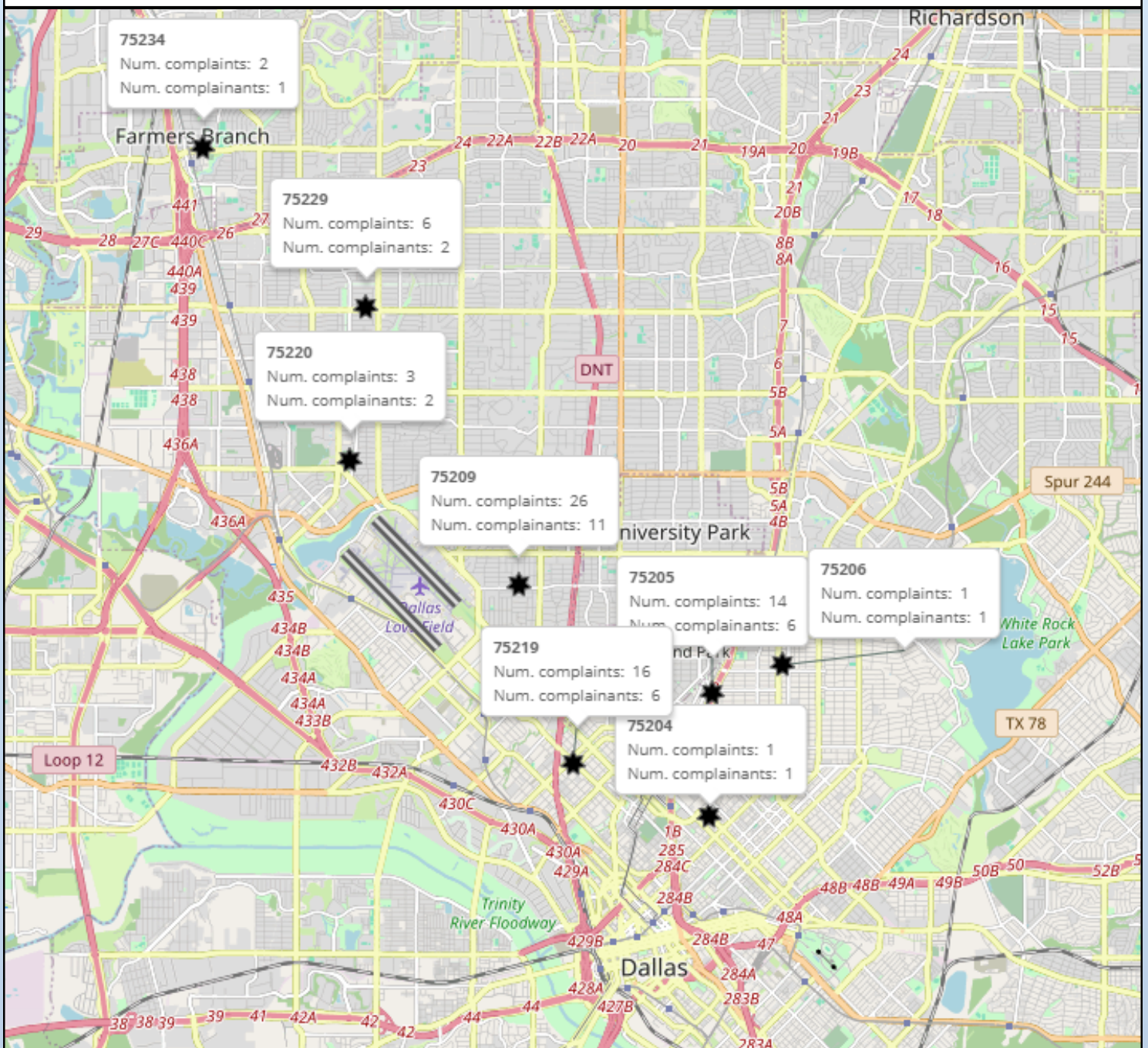


DEPARTURES PER RUNWAY



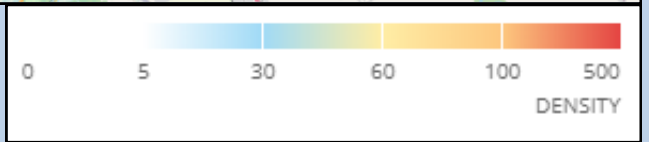
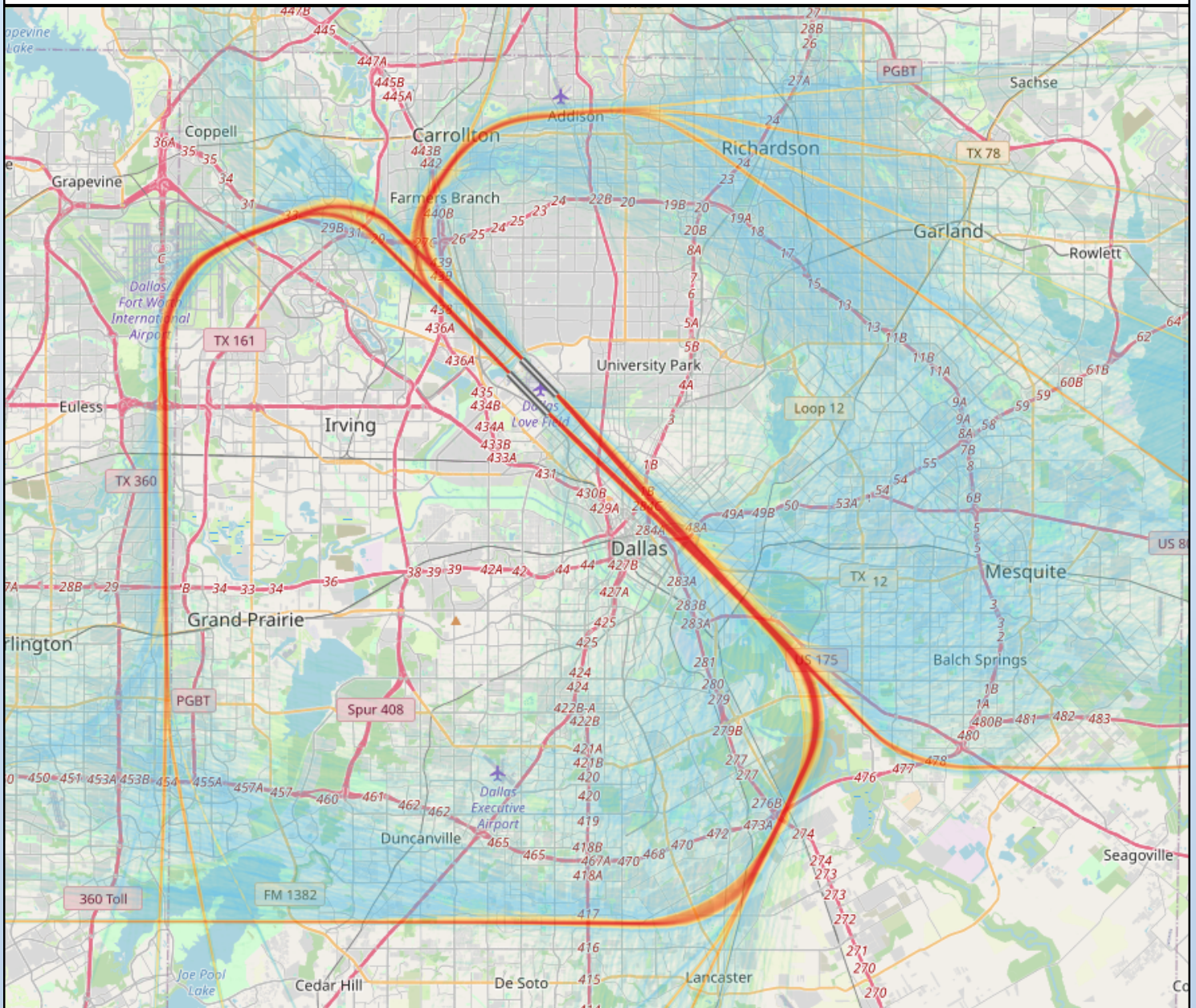
December Number of Complaints by Zip Code

The map below displays the number of complaints and complainants for zip codes in the immediate Dallas Love Field area.



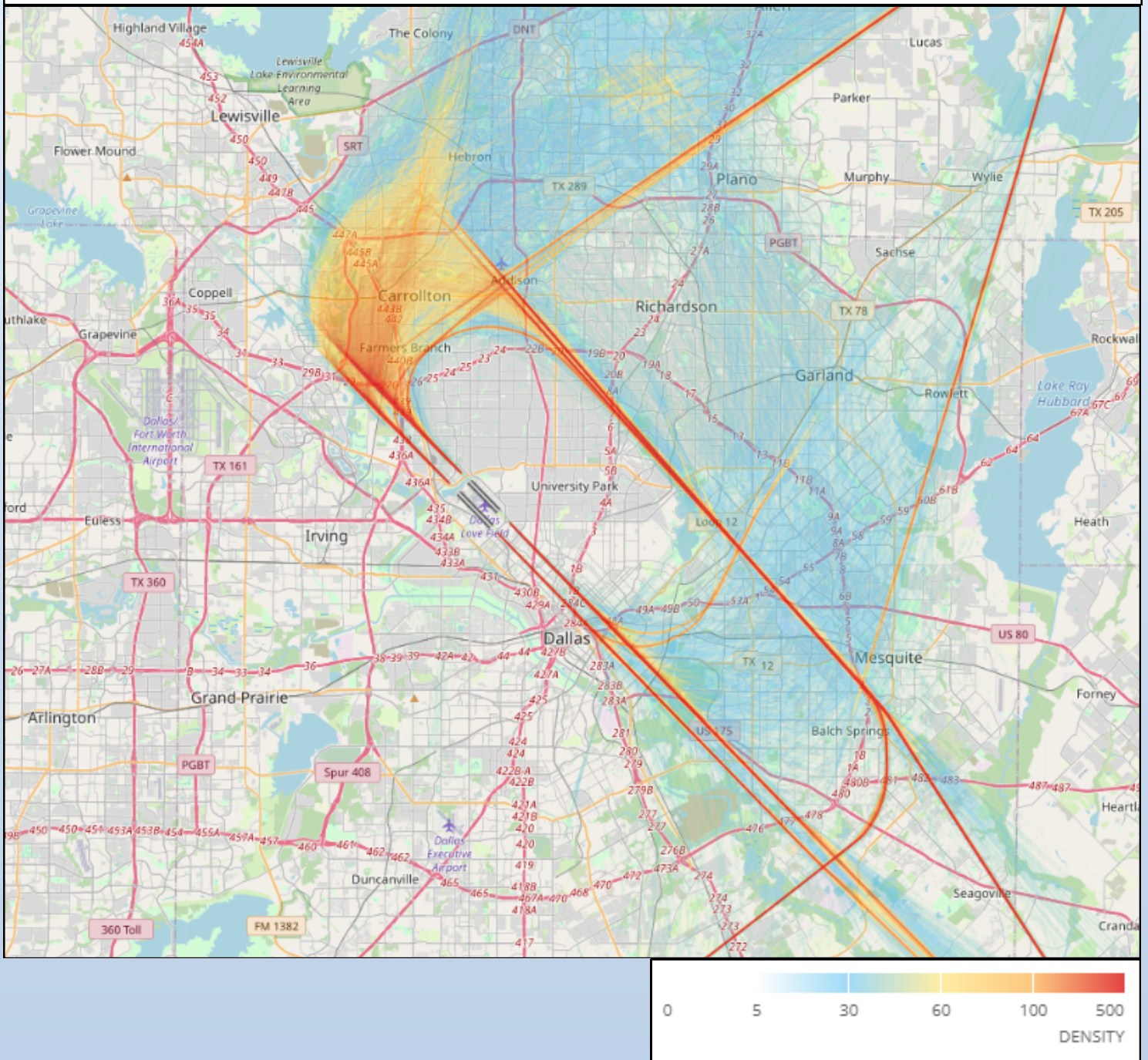
Flight Track Density Map December Departures

The following map takes all departure flight track data for the month and creates the radar density map. Dark red in the middle of the picture shows the highest density of flight tracks over the runways. The colors gradually move out to blue as the least dense.



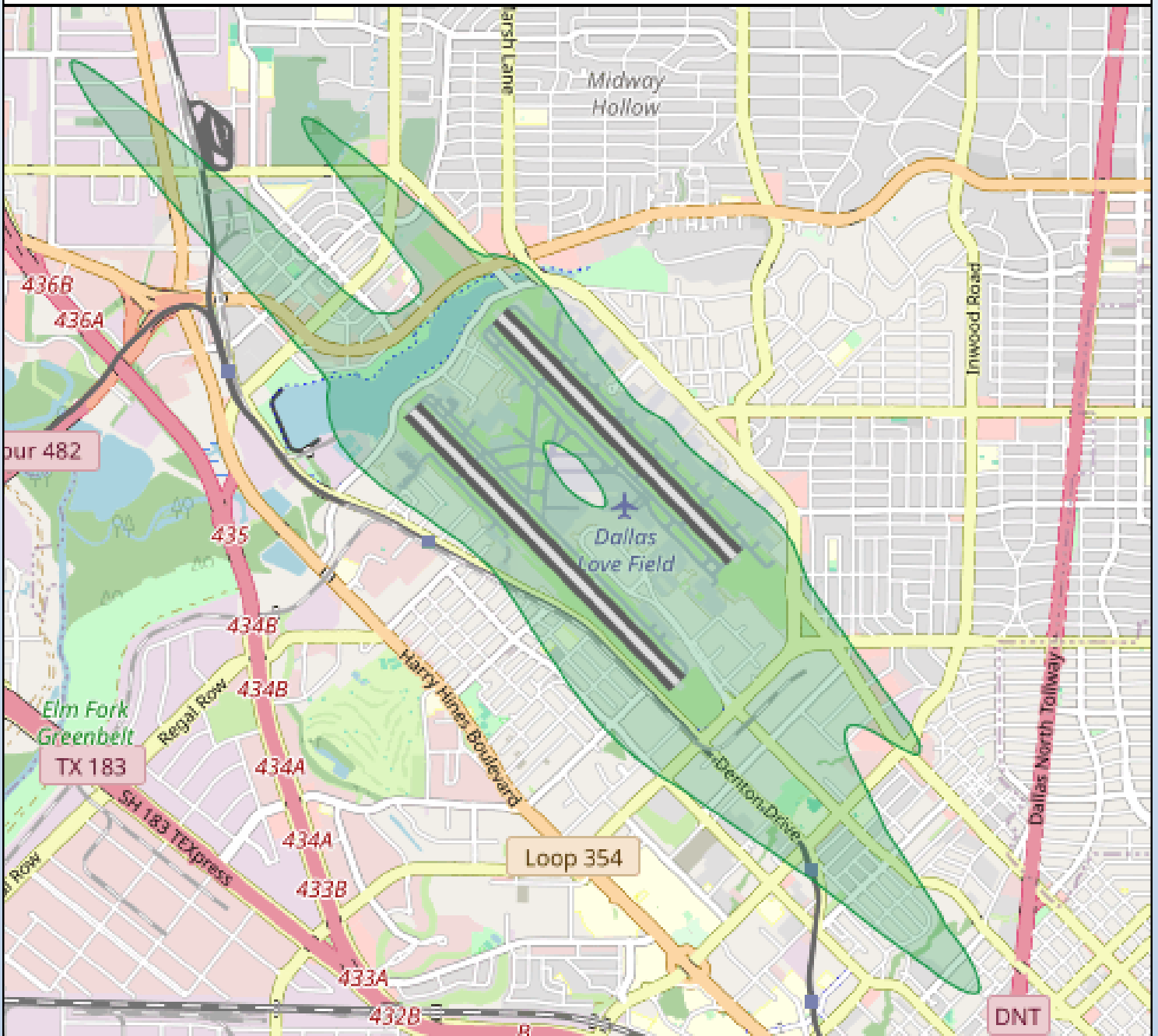
Flight Track Density Map December Arrivals

The following map takes all departure flight track data for the month and creates the radar density map. Dark red in the middle of the picture shows the highest density of flight tracks over the runways. The colors gradually move out to blue as the least dense.



2020 Day-Night Average Sound Level (DNL) Contour Map

DNL is a metric that reflects a person’s cumulative exposure to sound over a 24-hour period, expressed as the noise level for the average day of the year on the basis of annual aircraft operations. Below is a map of the most recent **65 dB** contour map for DAL.



Scheduled Runway Closures

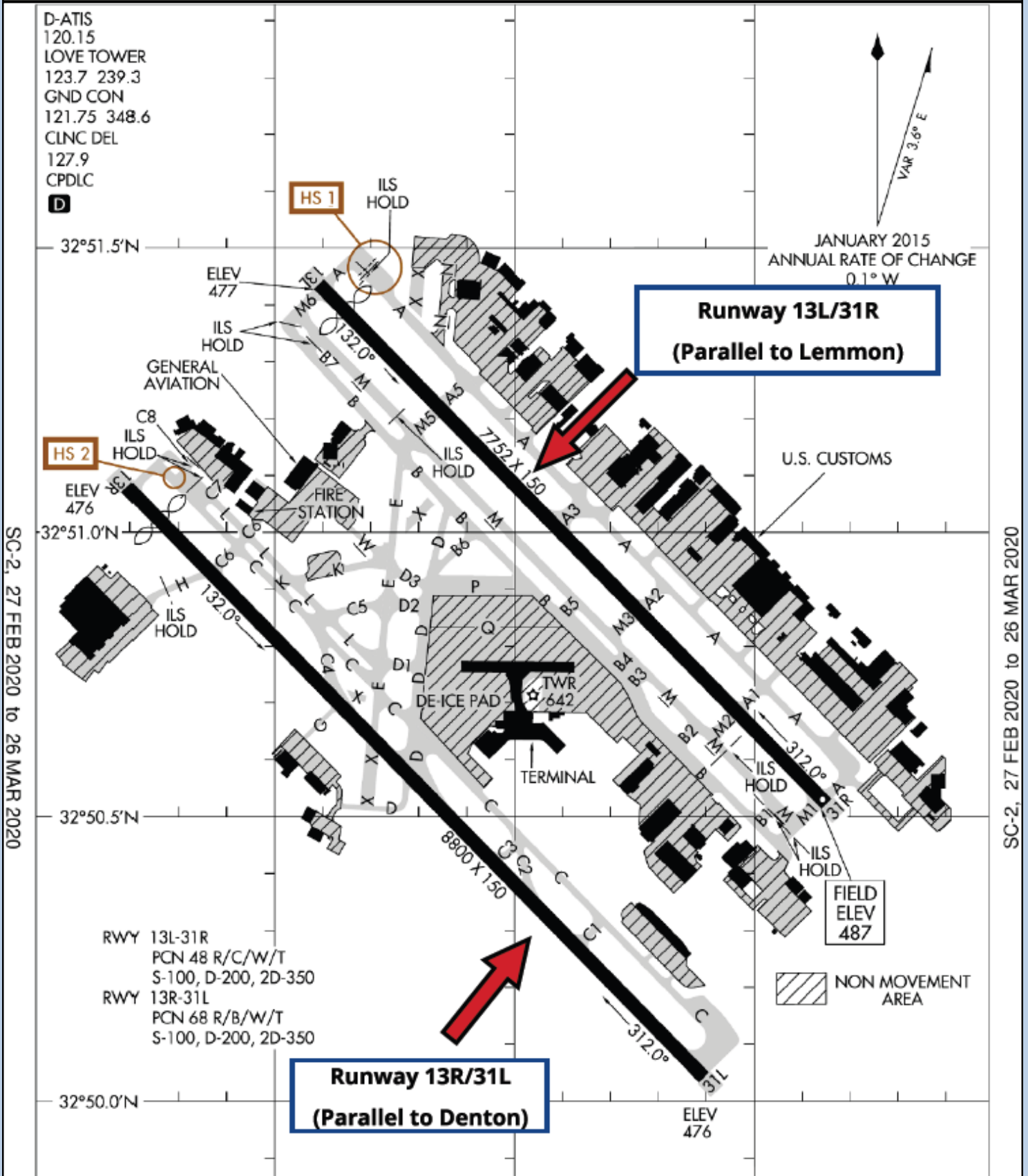
Runway 13L/31R (Lemmon) Closures

- **Tuesday, Jan 9th 11:00 p.m. - Wednesday, Jan 10th 6:00 a.m.:** Runway 13L/31R closed for General Maintenance
- **Wednesday, Jan 10th 11:00 p.m. - Thursday, Jan 11th 6:00 a.m.:** Runway 13L/31R closed for General Maintenance
- **Tuesday, Jan 16th 11:00 p.m. - Wednesday, Jan 17th 6:00 a.m.:** Runway 13L/31R closed for General Maintenance
- **Wednesday, Jan 17th 11:00 p.m. - Thursday, Jan 18th 6:00 a.m.:** Runway 13L/31R closed for General Maintenance

Runway 13R/31L (Lemmon) Closures

- **Thursday, Jan 4th 11:00 p.m. - Friday, Jan 5th 6:00 a.m.:** Runway 13R/31L closed for General Maintenance
- **Thursday, Jan 11th 11:00 p.m. - Friday, Jan 12th 6:00 a.m.:** Runway 13R/31L closed for General Maintenance

Airport Diagram



In an effort to serve you better, Dallas Love Field has opened the Airport Operation Center (AOC) for your use. The AOC is staffed 24 hours per day to direct your airport related concerns. please call the AOC at 214-670-LOVE (5683).

If you have any noise-related inquiries,
Please call 214-671-8096

Translated copies of this newsletter are
available upon request.

Las copias traducidas de este boletín
están disponibles bajo petición
a solicitud.



Dallas Love Field