



Dallas Love Field Noise Dynamics



Contents

Noise Corner.....	2
Flight Operations Report.....	4
Noise Complaints.....	6
Flight Track Density Map.....	7
65 DNL Contour Map.....	9
Scheduled Runway Closures...	10
Airport Diagram.....	11

Noise Corner

Introduction

Thank you for subscribing to Dallas Love Field's (DAL) Monthly Noise Dynamics. This newsletter is published for those interested in the topic of aircraft noise here at Dallas Love Field by providing useful information, monthly data, upcoming events and news.

Residents interested in receiving our monthly noise dynamics can send an email request to AVINoise@dallas.gov

Upcoming Events

The engine runup area is currently not being utilized due to the cross-field construction project. Large aircraft will use Taxiway T for engine runups and all other aircraft will use Taxiway P. The engine runup area is planned to reopen in Fall 2024.

Noise Corner

Outreach and Educational Activities

If you would like the Airport Noise Monitoring Specialist to attend neighborhood meetings, schools, or any other outreach activities to serve as a resource on aircraft noise related concerns, please email AVINoise@dallas.gov to let us know.

Helpful Links (Click on Icon to access link)



View information regarding aviation noise and/or the Voluntary Noise Program. NoiseLab allows you to obtain reports, view runway closures and access archived documents such as: LFEAC (Love Field Environmental Advisory Committee) presentations, annual DNL contour reports and newsletters.



Understand aircraft flight pattern, self-investigate aircraft events and submit noise concerns.



Access Dallas Executive Airport's Flight Tracker.



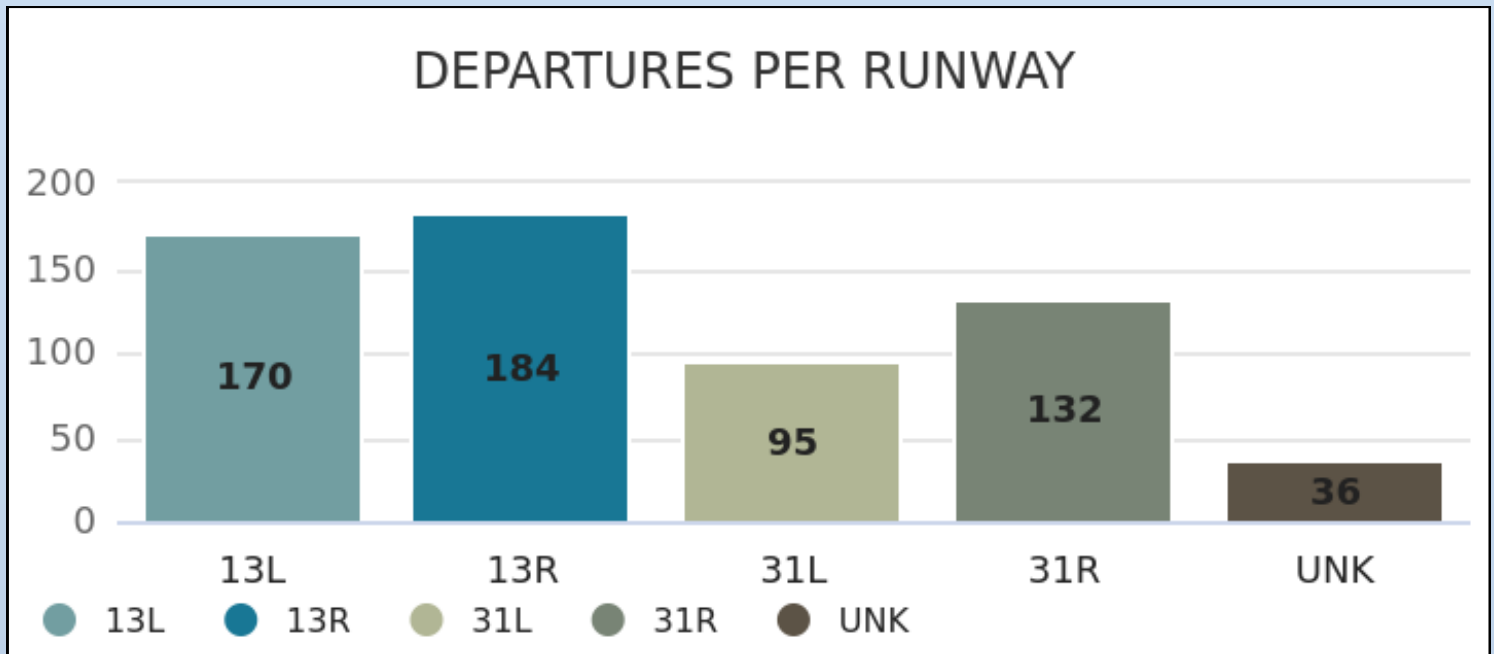
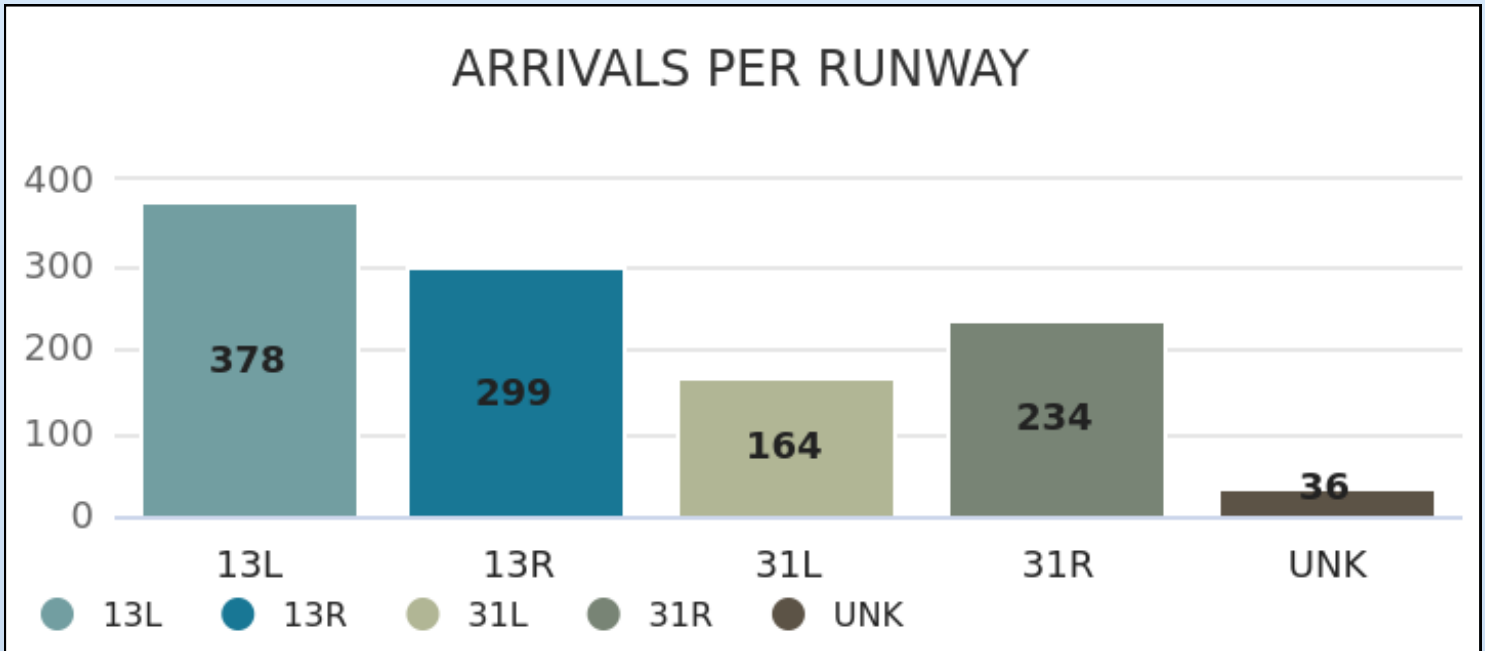
A demonstration of Flight Tracker



An overview of the National Airspace System around the DFW Metroplex.

February

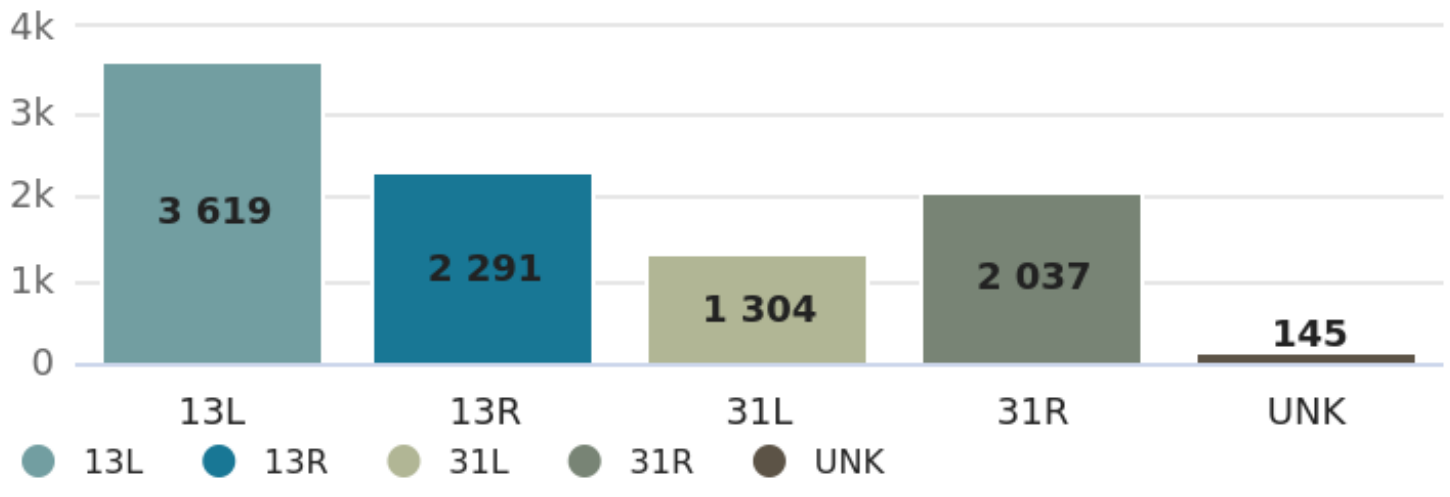
Arrivals and Departures From 9 p.m. - 6 a.m.



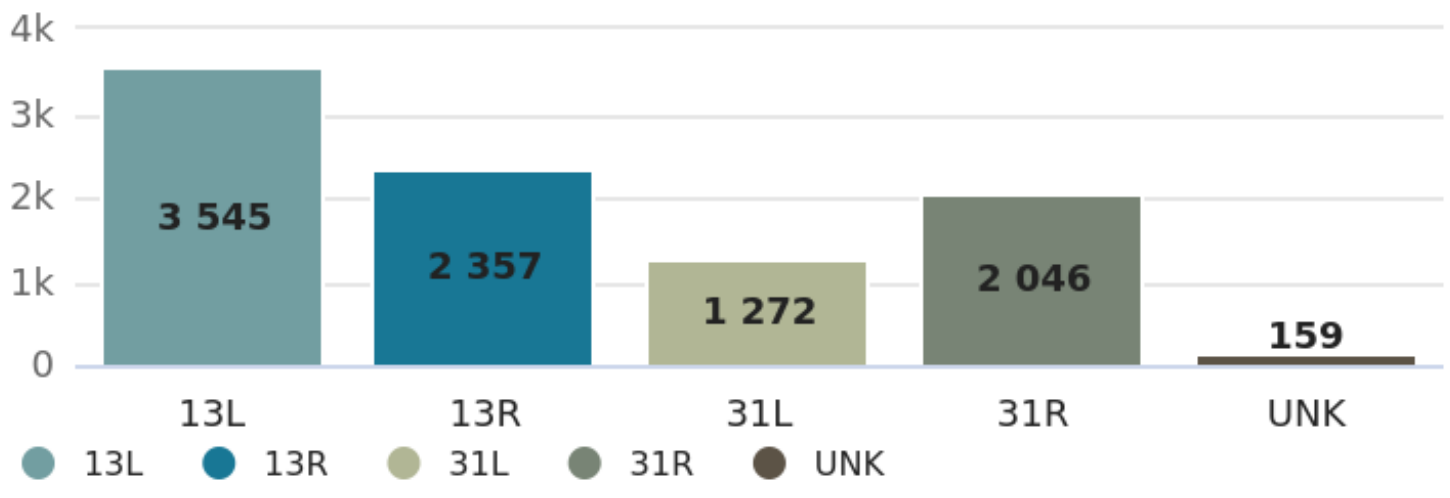
February

Arrivals and Departures

ARRIVALS PER RUNWAY



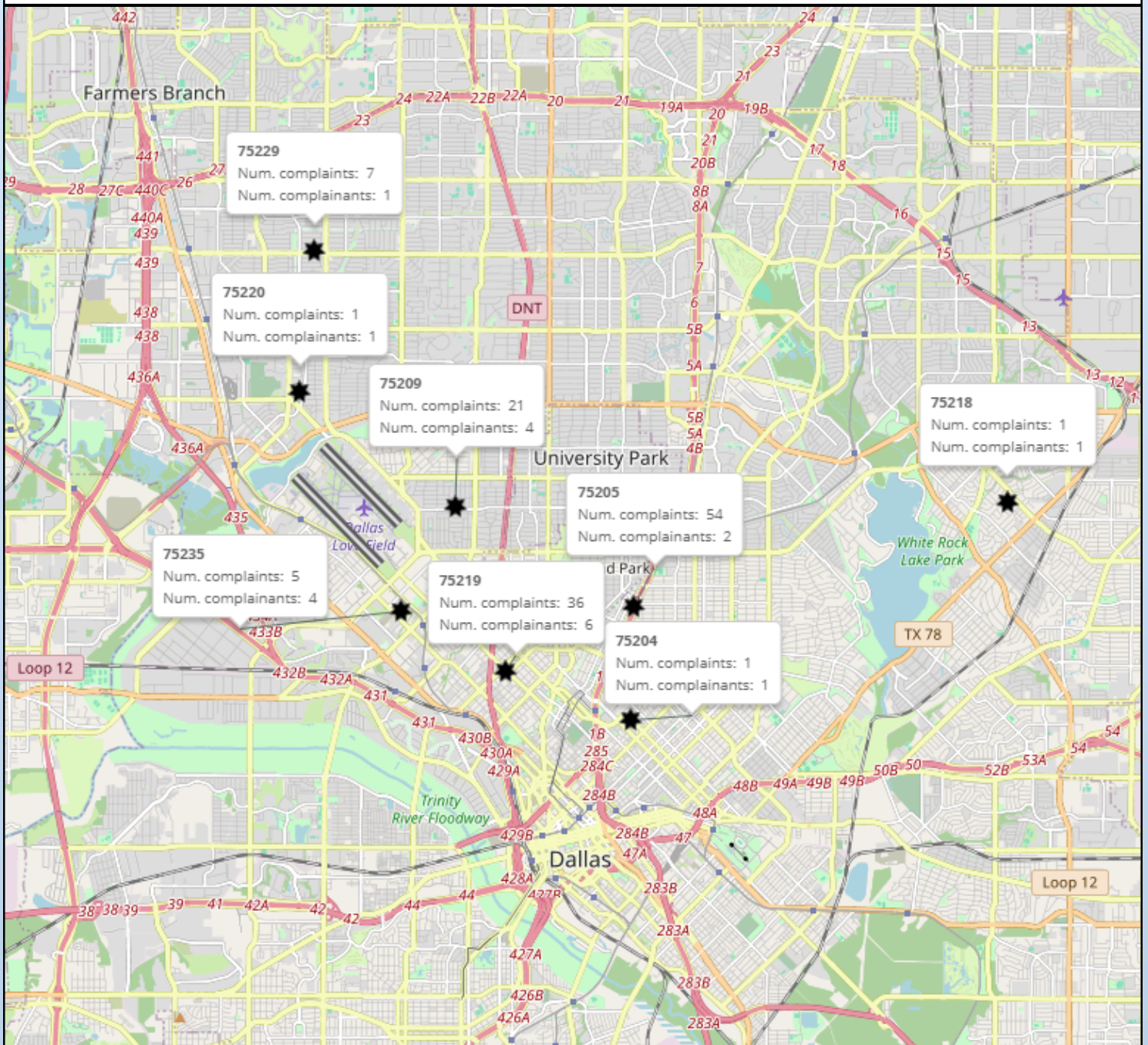
DEPARTURES PER RUNWAY



February

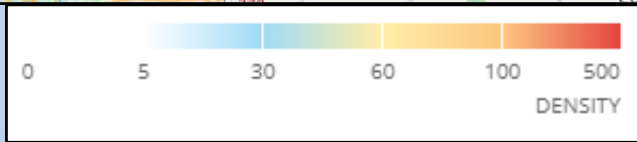
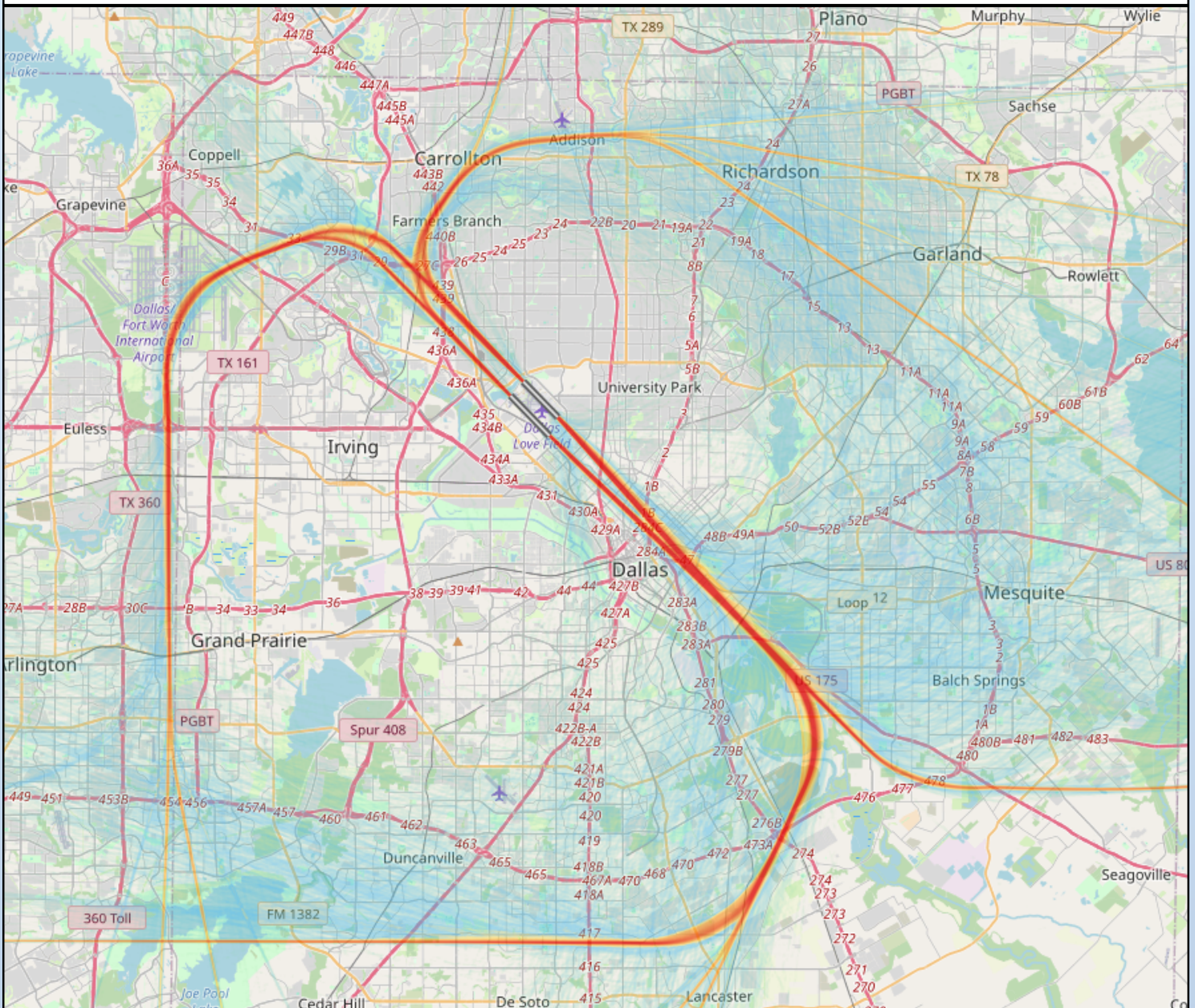
Number of Complaints by Zip Code

The map below displays the number of complaints and complainants for zip codes in the immediate Dallas Love Field area.



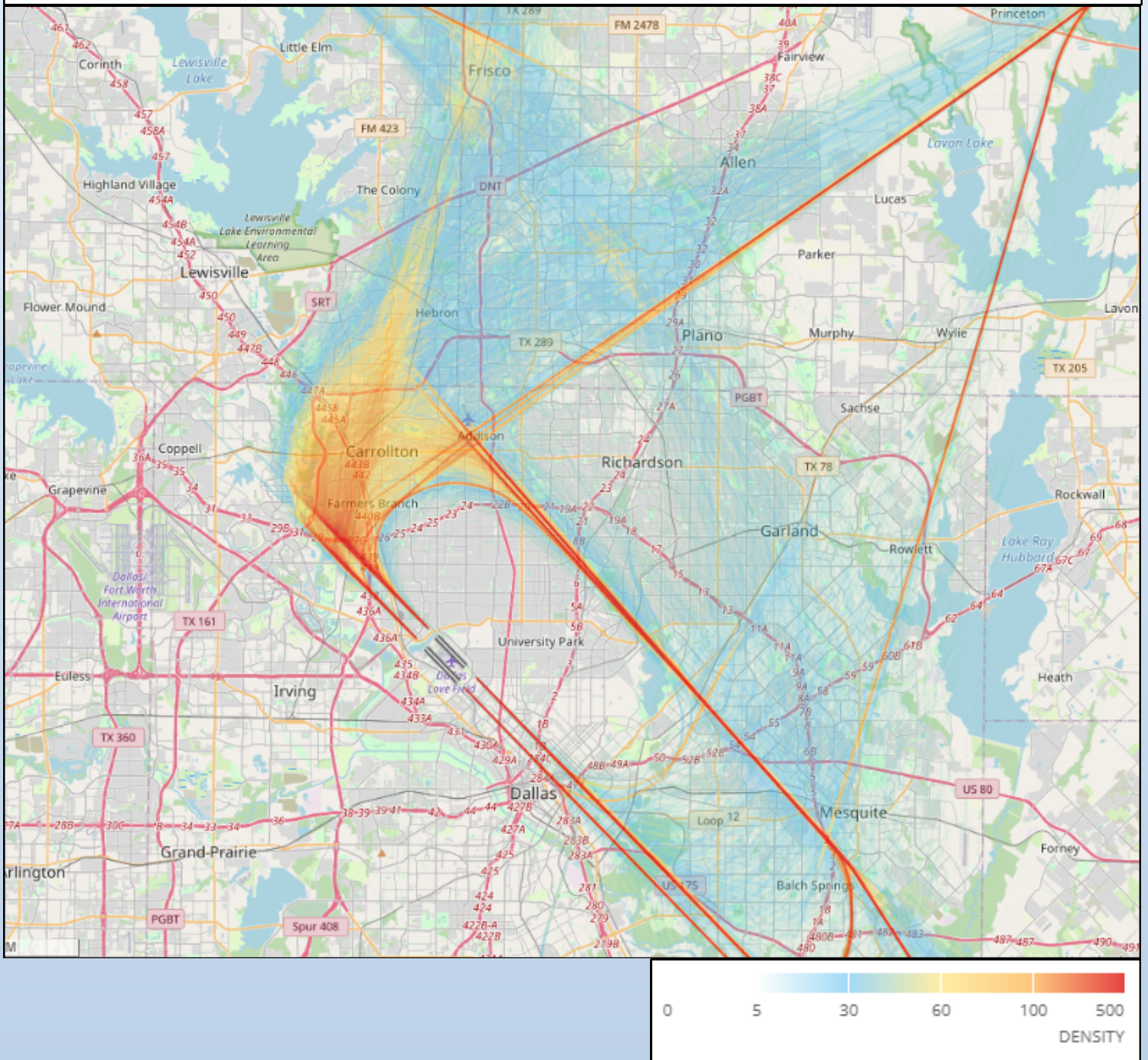
Flight Track Density Map February Departures

The following map takes all departure flight track data for the month and creates the radar density map. Dark red in the middle of the picture shows the highest density of flight tracks over the runways. The colors gradually move out to blue as the least dense.



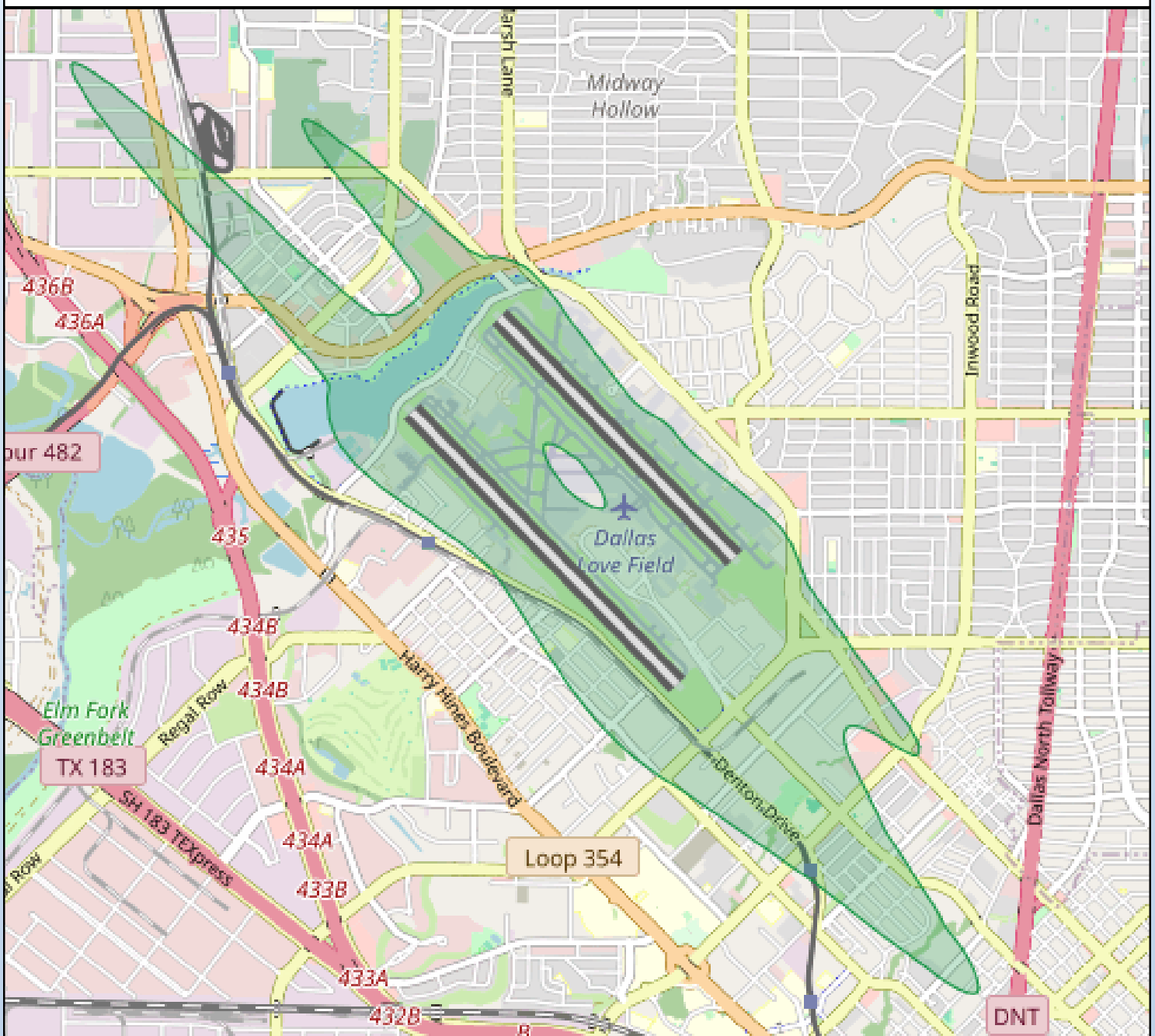
Flight Track Density Map February Arrivals

The following map takes all arrival flight track data for the month and creates the radar density map. Dark red in the middle of the picture shows the highest density of flight tracks over the runways. The colors gradually move out to blue as the least dense.



2020 Day-Night Average Sound Level (DNL) Contour Map

DNL is a metric that reflects a person's cumulative exposure to sound over a 24-hour period, expressed as the noise level for the average day of the year on the basis of annual aircraft operations. Below is a map of the most recent **65 dB** contour map for DAL.



Scheduled Runway Closures

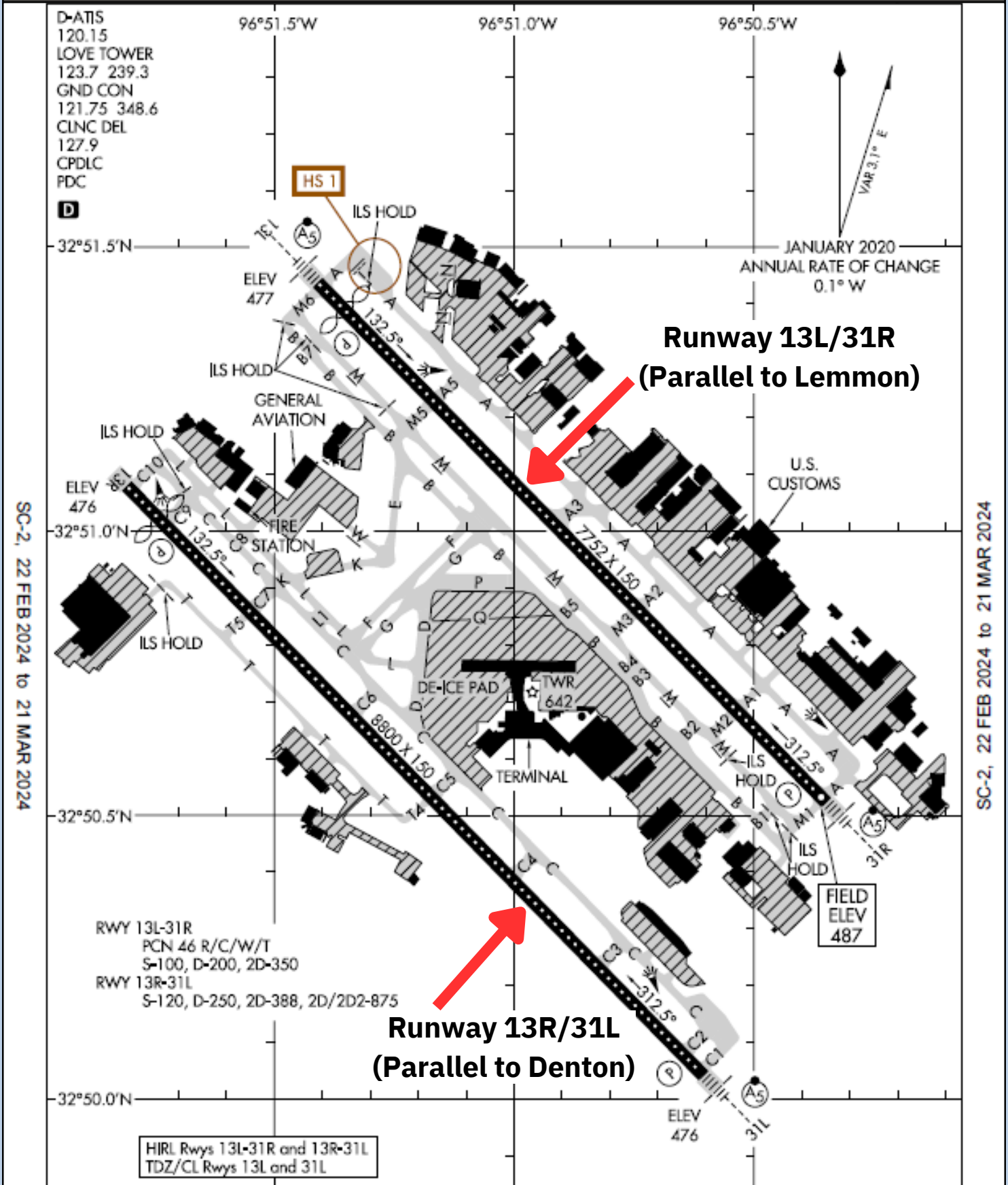
Runway 13L/31R (Lemmon) Closures

- **Friday, March 1st 11:00 p.m. - Saturday, March 2nd 6:00 a.m.:**
Runway 13L/31R closed for General Maintenance
- **Tuesday, March 5th 11:00 p.m. - Wednesday, March 6th 6:00 a.m.:**
Runway 13L/31R closed for General Maintenance
- **Wednesday, March 6th 11:00 p.m. - Thursday, March 7th 6:00 a.m.:**
Runway 13L/31R closed for General Maintenance
- **Friday, March 8th 11:00 p.m. - Saturday, March 9th 6:00 a.m.:**
Runway 13L/31R closed for General Maintenance
- **Tuesday, March 12th 11:00 p.m. - Wednesday, March 13th 6:00 a.m.:**
Runway 13L/31R closed for General Maintenance
- **Wednesday, March 13th 11:00 p.m. - Thursday, March 14th 6:00 a.m.:**
Runway 13L/31R closed for General Maintenance

Runway 13R/31L (Lemmon) Closures

- **Thursday, March 7th 11:00 p.m. - Friday, March 8th 6:00 a.m.:**
Runway 13R/31L closed for General Maintenance

Airport Diagram



In an effort to serve you better, Dallas Love Field has opened the Airport Operation Center (AOC) for your use. The AOC is staffed 24 hours per day to direct your airport related concerns. please call the AOC at 214-670-LOVE (5683).

If you have any noise-related inquiries,
Please call 214-671-8096

Translated copies of this newsletter are
available upon request.

Las copias traducidas de este boletín
están disponibles bajo petición
a solicitud.



Dallas Love Field