



# Dallas Love Field Noise Dynamics



## Contents

Noise Corner.....	2
Flight Operations Report.....	4
Noise Complaints.....	6
Flight Track Density Map.....	7
65 DNL Contour Map.....	9
Scheduled Runway Closures...	10
Airport Diagram.....	11

# Noise Corner

## Introduction

Thank you for subscribing to Dallas Love Field's (DAL) Monthly Noise Dynamics. This newsletter is published for those interested in the topic of aircraft noise here at Dallas Love Field by providing useful information, monthly data, upcoming events and news.

Residents interested in receiving our monthly noise dynamics can send an email request to [AVINoise@dallas.gov](mailto:AVINoise@dallas.gov)

## Upcoming Events

- **Runway 13L/31R (Parallel to Lemmon) will be closed for 85 days, Aug 5th - Oct 29th, for the Runway Safety Area Improvements & Rehabilitation Taxiway A project. During this time, all aircraft traffic will utilize Runway 13R/31L (Parallel to Denton).**
- **The Dallas Love Field 65 DNL Noise Contour Report using 2023 data is now available. The 2023 report and previous reports can be found [here](#).**
- **The engine runup area is currently not being utilized due to the cross-field construction project. Large aircraft will use Taxiway T for engine runups and all other aircraft will use Taxiway P. The engine runup area is planned to reopen in Fall 2024.**

## Noise Corner

### Outreach and Educational Activities

If you would like the Airport Noise Monitoring Specialist to attend neighborhood meetings, schools, or any other outreach activities to serve as a resource on aircraft noise related concerns, please email [AVINoise@dallas.gov](mailto:AVINoise@dallas.gov) to let us know.

### Helpful Links (Click on Icon to access link)



#### [NoiseLab](#)

View information regarding aviation noise and/or the Voluntary Noise Program. NoiseLab allows you to obtain reports, view runway closures and access archived documents such as: LFEAC (Love Field Environmental Advisory Committee) presentations, annual DNL contour reports and newsletters.



#### [Flight Tracker - DAL](#)

Understand aircraft flight pattern, self-investigate aircraft events and submit noise concerns.



#### [Flight Tracker - DEA](#)

Access Dallas Executive Airport's Flight Tracker.



#### [YouTube - Flight Tracker](#)

A demonstration of Flight Tracker

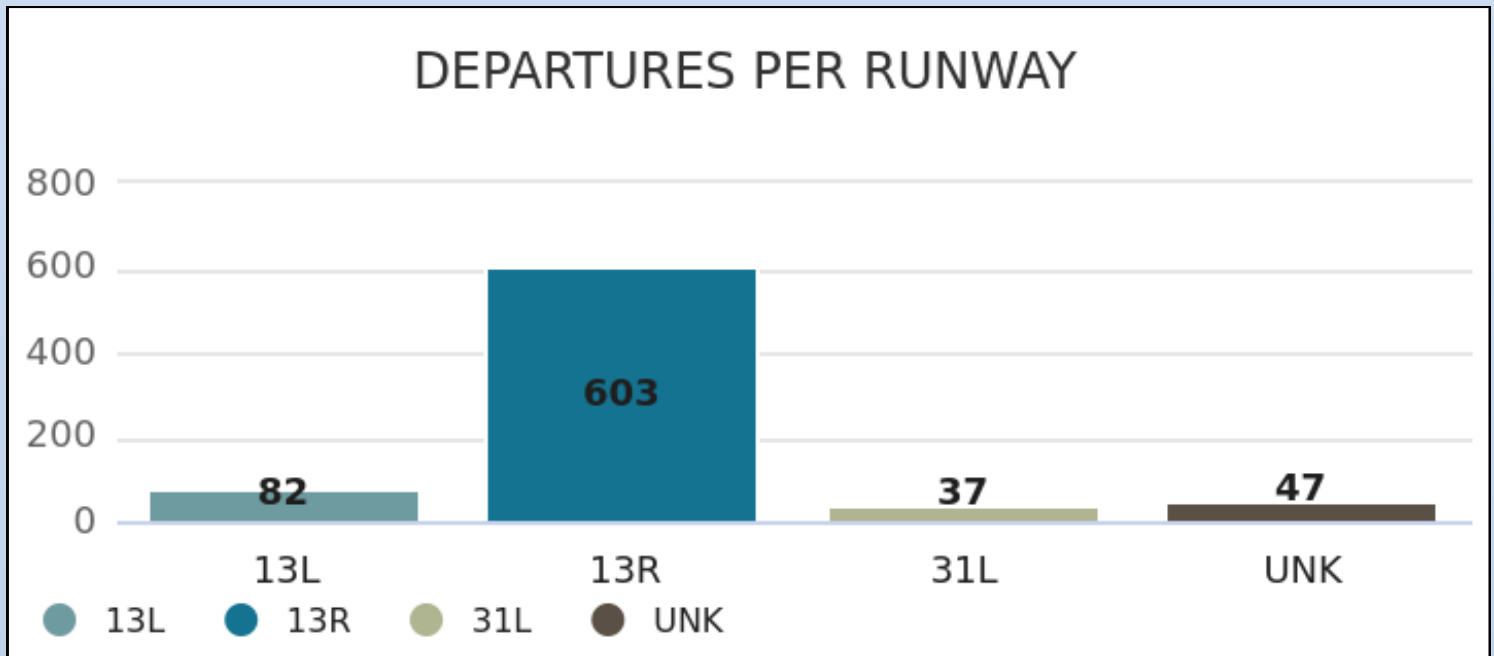
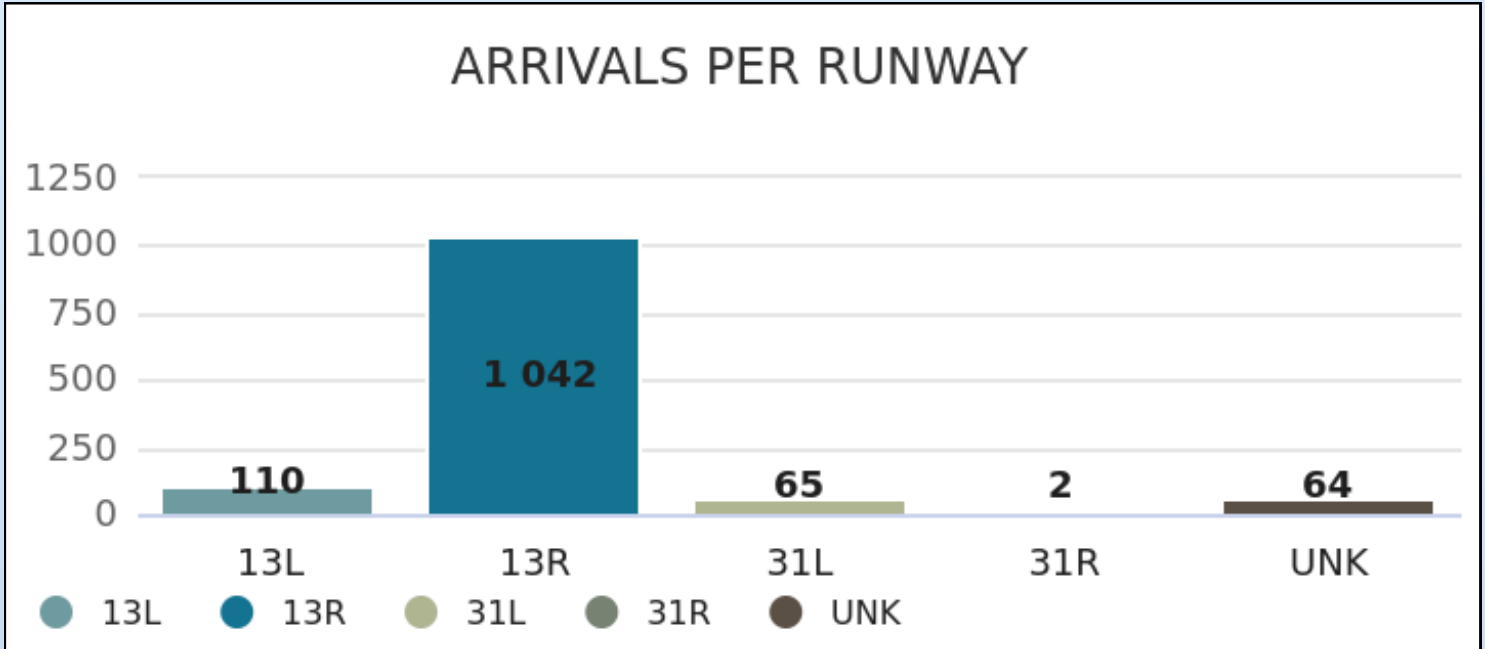


#### [YouTube - DAL Air Traffic Operations by FAA](#)

An overview of the National Airspace System around the DFW Metroplex.

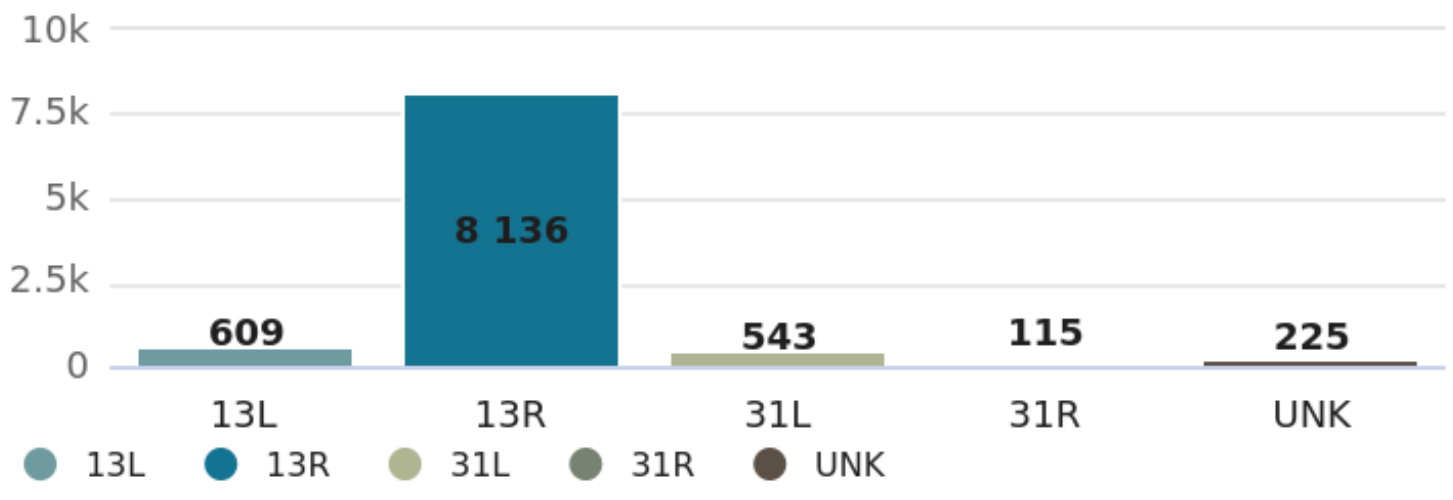
# August

## Arrivals and Departures From 9 p.m. - 6 a.m.

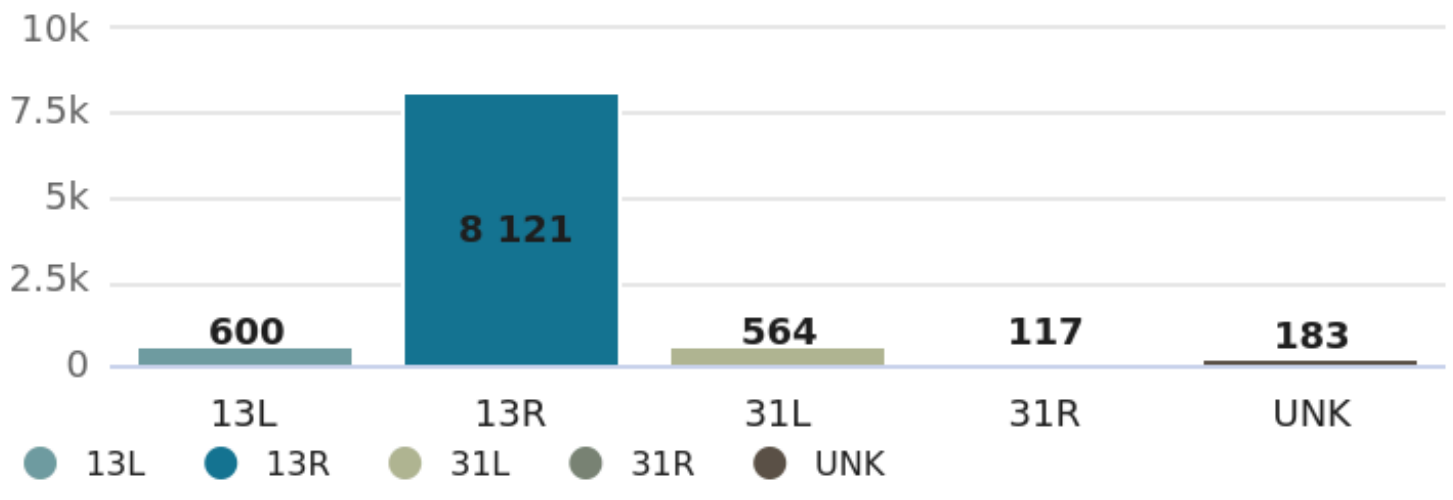


# August Arrivals and Departures

### ARRIVALS PER RUNWAY



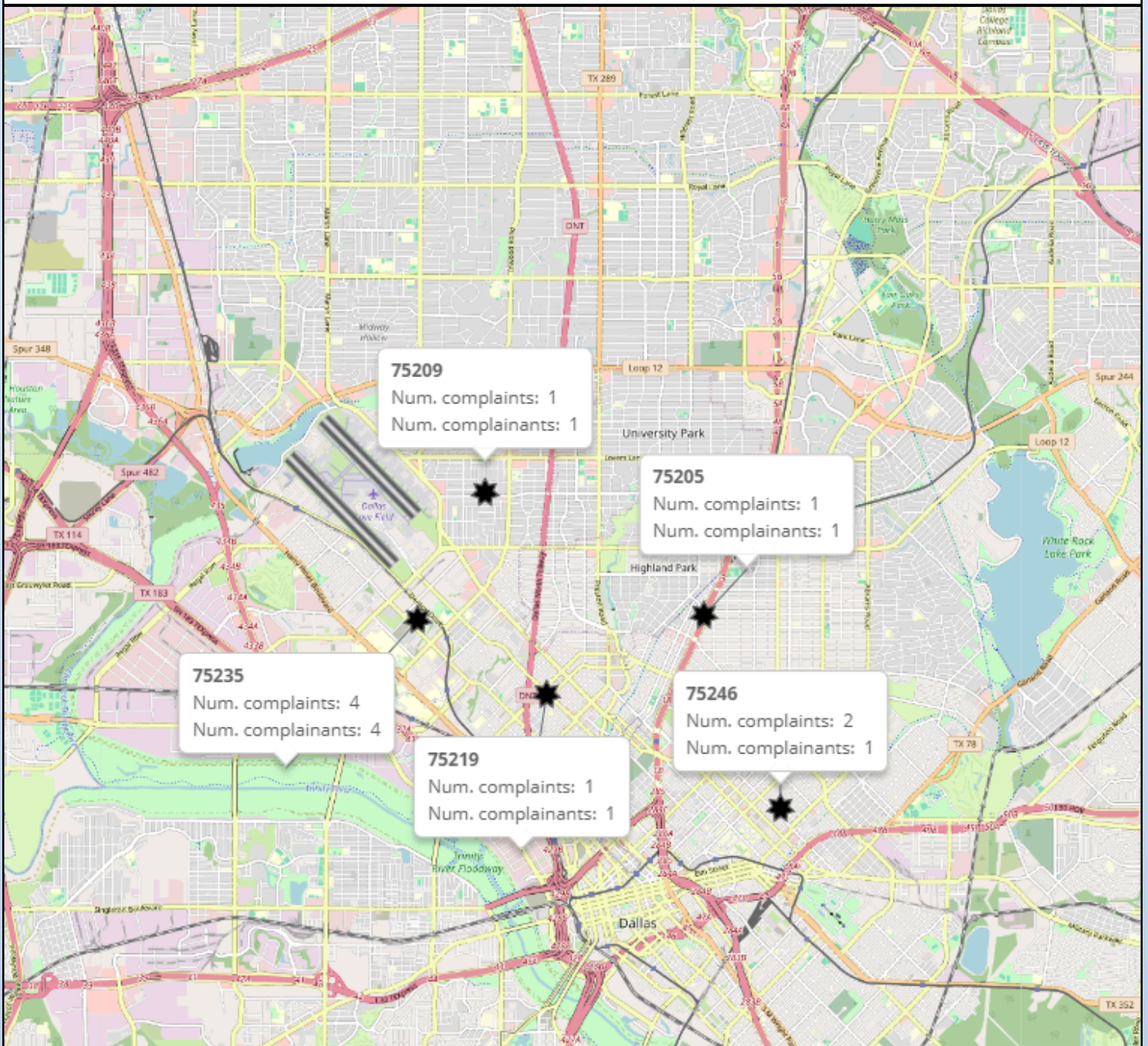
### DEPARTURES PER RUNWAY



# August

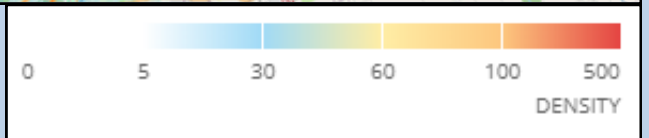
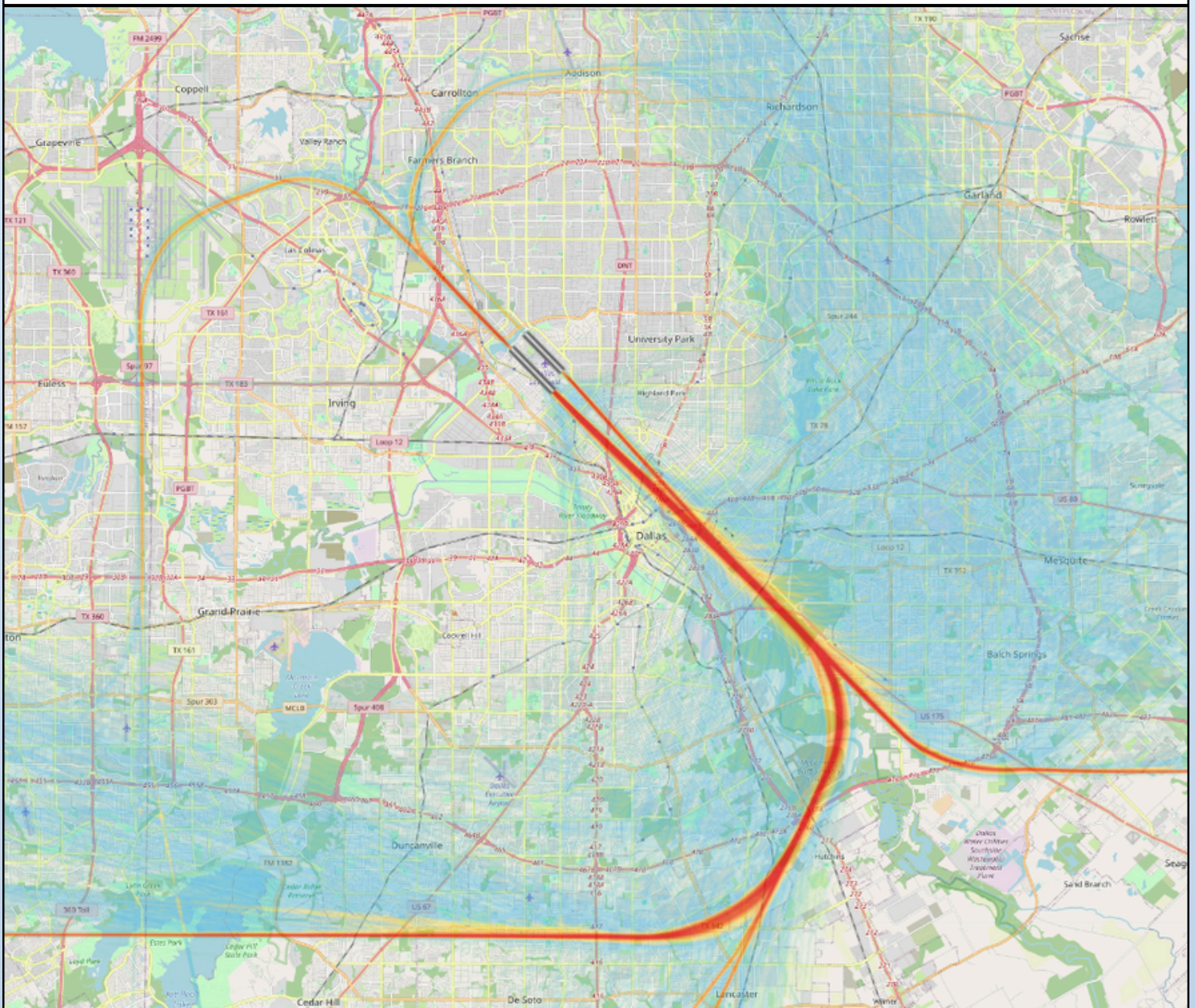
## Number of Complaints by Zip Code

The map below displays the number of complaints and complainants for zip codes in the immediate Dallas Love Field area.



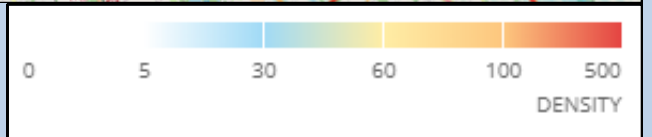
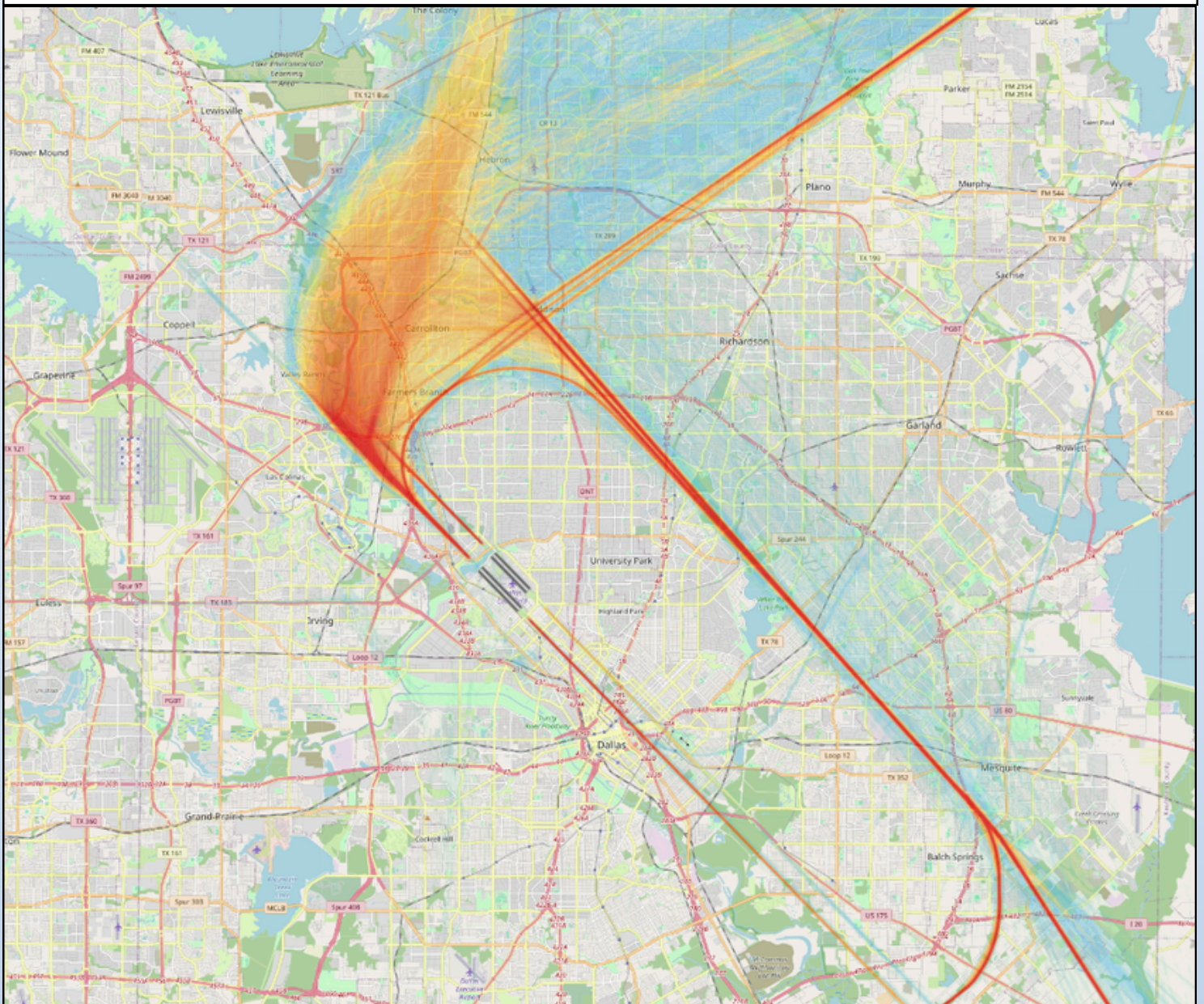
# Flight Track Density Map August Departures

The following map takes all departure flight track data for the month and creates the radar density map. Dark red in the middle of the picture shows the highest density of flight tracks over the runways. The colors gradually move out to blue as the least dense.



# Flight Track Density Map August Arrivals

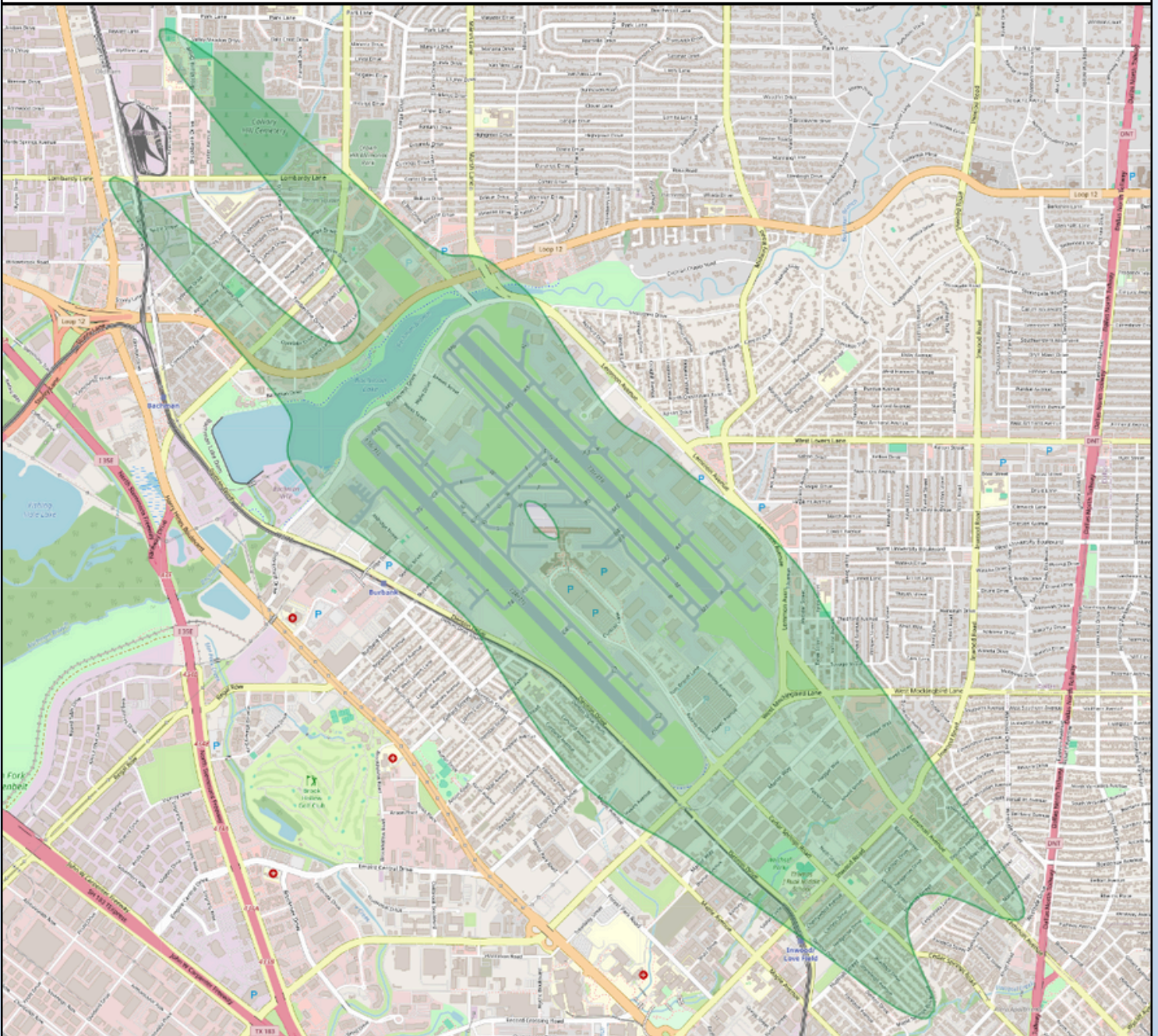
The following map takes all arrival flight track data for the month and creates the radar density map. Dark red in the middle of the picture shows the highest density of flight tracks over the runways. The colors gradually move out to blue as the least dense.





# 2023 Day-Night Average Sound Level (DNL) Contour Map

DNL is a metric that reflects a person's cumulative exposure to sound over a 24-hour period, expressed as the noise level for the average day of the year on the basis of annual aircraft operations. Below is a map of the **2023 65 dB** contour map for DAL. The 2023 Contour Report can be found [here](#).



## Scheduled Runway Closures

### Runway 13L/31R (Lemmon) Closures

- **Sunday, Aug 4th 11:00 p.m. - Tuesday, Oct 29th 6:00 a.m.:**  
Runway 13L/31R closed for Phase 3 of 13L/31R RSA & TWY A project

### Runway 13R/31L (Lemmon) Closures

- **Wednesday, Sep 4th 1:00 a.m. - 5:00 a.m.:**  
Runway 13R/31L closed for General Maintenance
- **Friday, Sep 6th 1:00 a.m. - 5:00 a.m.:**  
Runway 13R/31L closed for General Maintenance
- **Wednesday, Sep 11th 1:00 a.m. - 5:00 a.m.:**  
Runway 13R/31L closed for General Maintenance
- **Friday, Sep 13th 1:00 a.m. - 5:00 a.m.:**  
Runway 13R/31L closed for General Maintenance
- **Wednesday, Sep 18th 1:00 a.m. - 5:00 a.m.:**  
Runway 13R/31L closed for General Maintenance



In an effort to serve you better, Dallas Love Field has opened the Airport Operation Center (AOC) for your use. The AOC is staffed 24 hours per day to direct your airport related concerns. please call the AOC at 214-670-LOVE (5683).

If you have any noise-related inquiries,  
Please call 214-671-8096

Translated copies of this newsletter are  
available upon request.

Las copias traducidas de este boletín  
están disponibles bajo petición  
a solicitud.



Dallas Love Field